



museums
UNIVERSITY OF ALBERTA

ANNUAL REPORT

July 1, 2013 to October 31, 2014

UNIVERSITY OF ALBERTA MUSEUMS ANNUAL REPORT

*including the report of the University of Alberta Museums
Policy and Planning Committee*

ANNUAL REPORT

July 1, 2013 to October 31, 2014

TABLE OF CONTENTS

1.0	Executive Summary	7
2.0	Report of the University of Alberta Museums Policy and Planning Committee	9
2.1	ACTIVITY ONE University of Alberta Museums and Collections Policy	9
2.2	ACTIVITY TWO Curatorial Research Facility	10
2.3	ACTIVITY THREE Review of Category “A” Designation	12
2.4	ACTIVITY FOUR Reaccreditation of Recognized Museum Status	12
2.5	ACTIVITY FIVE Return of Cultural Property Request	13
2.6	ACTIVITY SIX Community Engagement	13
2.7	ACTIVITY SEVEN Funding Needs Adjudication	18

APPENDICES

A	Policy and Planning Committee Membership 2013–14	29
B	Directory of Registered Collections of the University of Alberta Museums	30
C	Museums and Collections Services Staff	32
D	Friends of the University of Alberta Museums Board of Directors 2013–14	32
E	Detailed Funding Report	33



MISSION

We are committed to initiating and leading innovative museum strategies and solutions that ensure the University of Alberta Museums are relevant to the University of Alberta academic, research, and community engagement missions and to make our museum collections universally accessible to students and researchers and our diverse local and international communities.

MANDATE

Museums and Collections Services provide museum leadership in strategies and services to assist the University of Alberta Museums in fulfilling their academic mission at the University of Alberta by:

- Providing a framework for our distributed academic museum system and committee structures;
- Maintaining a policy and procedure framework within UAPPOL that facilitates compliance;
- Developing digital/multimedia collections-based initiatives that support research, teaching, and fiduciary requirements;
- Developing standards that affect collections care for access, storage, risk management, and emergency preparedness;
- Ensuring curatorial and stewardship initiatives for the University of Alberta Art Collection, including the Mactaggart Art Collection, the Ethnographic Collection, and the Historical Objects Collection;
- Advancing a Public Art Program for all U of A Campuses; and
- Ensuring physical and intellectual access to museum collections and associated knowledge through diverse programs.

ANNUAL REPORT

July 1, 2013 to October 31, 2014

1.0

EXECUTIVE SUMMARY

This report summarizes the activities of the University of Alberta Museums Policy and Planning Committee, with selected highlights from U of A Museums/ Museums and Collections Services activities and achievements from July 1, 2013 to October 31, 2014. Although we normally report on the activities in the academic year, there have been many developments and achievements that warrant an up-to-date presentation.

- Focus continued on exhibitions and community engagement through the Enterprise Square Galleries initiative with the City of Edmonton. The Policy and Planning Committee continues discussions on the benefits and challenges regarding participation in this initiative.
- Staff from Museums and Collections Services and the Department of Anthropology, in conjunction with the Office of the Provost, saw to the successful repatriation and reburial of remains of 26 individuals from the former Sharphead Band, resolving a nearly-50-year-old claim.
- The committee approved acquisition strategies for two registered academic museum collections (Bryan/Gruhn Archaeology Collection and Meteorite Collection) that identify collecting direction in support of faculty and department-level academic plans.
- The committee continues to have strong concerns with regards to deficient facilities and the lack of resources for the University of Alberta Museums.





2.0

**REPORT OF THE UNIVERSITY OF ALBERTA
MUSEUMS POLICY AND PLANNING COMMITTEE**



The University of Alberta Museums Policy and Planning Committee met formally on November 7 and December 9, 2013 and April 2 and October 15, 2014. Several issues identified in the last report are ongoing in this academic year.

2.1

ACTIVITY ONE

**University of Alberta Museums
and Collections Policy** *(ongoing activity)*

The following key policy compliance tasks and activities occurred in 2013-14:

- 
- To be compliant with our Board of Governors-approved museums policy, all academic museum collections must have an acquisition strategy which guides what is collected and for what purpose. Through the phased-in strategy executed by the staff of Museums and Collections Services, 17 of the 29 registered academic museum collections have approved acquisition strategies as of October 31, 2014. The remaining 12 acquisition strategies are in various stages of completion but have been delayed due to staff shortages. These strategies are based on departmental academic plans which serve to fulfill the mission and mandate of the University of Alberta to be one of the best research-intensive public universities in the world.
 - Approximately 1400 objects were approved for deaccessioning from the Dentistry Collection as part of the ongoing project to move this collection from the Dentistry/Pharmacy building to the Edmonton Clinic Health Academy. Deaccessioning will take place during the 2015/16 academic year.

2.2

ACTIVITY TWO

Curatorial Research Facility

(ongoing activity)

The Policy and Planning Committee continues to advocate for the need for dedicated, purpose-built facilities for the academic museum collections associated with the U of A Museums and the need to reopen and update the planning conducted in 2005 for the Curatorial Research Facility.

Academic museum collections on campus continue to be affected by inaccessibility for teaching and research purposes as well as potentially serious environmental risks due to non-compliant facilities. The following incidents occurred during the reporting period, the majority of which were brought to the attention of the staff of Museums and Collections Services via our 24-hour emergency response line. Not all incidents resulted in damage to the collections, though each reported issue necessitates team response and assessment of potential impact:

- Flood in Vertebrate Paleontology Collection in July, 2013. (Ongoing repeated flooding with negative impact on collection storage facility. Two incidents in July alone.)
- Flood in Earth and Atmospheric Sciences Building affecting Mineralogy/Petrology and Paleontology Museums in July, 2013. (Though no specimens were compromised, a heavy rainfall caused water to seep into exhibit cases.)
- Fire at Heritage Medical Facility in July, 2013. (Smoke circulation through the building had potential negative impact on three loaned public artworks.)
- Fire in Corbett Hall in August, 2013. (Potential impact on public art collection.)
- Bug infestation of the Ornithology Collection in the Zoology Museum in the Biological Sciences Building, discovered in the fall of 2013 during a special collections inventory. A treatment plan was quickly executed, and specimens were isolated to prevent further spread. Following isolation and treatment, the specimens were returned to the Zoology Museum. Monitoring is ongoing.
- Burst water pipe in Henry Marshall Tory Building in February, 2014. (Incident had potential impact on Ethnography Collection as well as public art exhibited in the building.)
- Water leak in South Academic Building in March, 2014. (Potential affect to Zooarchaeology Reference Collection and public art exhibited in the building.)
- Flooding in Pembina Hall in August, 2014. (Potential impact to public art on loan as well as storage facilities for historical objects.)





A new Curatorial Research Facility to house the 29 museum collections and 17 million objects for teaching, research, and exhibition will ease the challenges with maintaining more than 120 current locations. The majority of these locations do not meet museum standards, meaning many world-renowned researchers are working in sub-standard facilities. It will also serve to meet the needs outlined to maintain the University of Alberta Museums' Category "A" designation to ensure care and handling of some of the most significant collections in the country, as defined by the Department of Canadian Heritage. While many institutions are working on their second or third generation facilities, the University of Alberta Museums continue to operate without a purpose-built facility for these critically important collections.



2.3

ACTIVITY THREE

Review of Category “A” Designation

(ongoing activity)

The U of A Museums’ Category “A” Designation, conferred by the Department of Canadian Heritage, has been under review since 2004–05 when the U of A first pledged to build a Curatorial Research Facility to ensure compliance. This designation ensures that the U of A has the capacity to collect certified cultural property and provide public access to these objects. Staff of Museums and Collections Services completed a status review in December, 2013, requested by the Government of Canada.

The U of A Museums have received a provisional pass in certain areas (the U of A Art Collection—including the Print Study Centre and Mactaggart Art Collection—and the Clothing and Textiles Collection), but there is much more work to be done. Our designation will continue to be reviewed by the federal government every five to seven years.

2.4

ACTIVITY FOUR

Reaccreditation of Recognized Museum Status

(new activity)

The University of Alberta Museums holds accreditation through the Alberta Museums Association’s Recognized Museum Program. Staff from Museums and Collections Services submitted the necessary documentation in October, 2014 to facilitate renewal of this status for 2015–2020, the outcome of which is pending. This accreditation is essential to ensure access to certain grants which are distributed by the Alberta Museums Association on behalf of the Government of Alberta.

According to the Alberta Museums Association, a recognized museum is defined as the following:

“...a non-profit making, permanent institution in the service of society and of its development, and open to the public which acquires, conserves, researches, communicates, and exhibits, for purposes of study, education, and enjoyment, material evidence of people and their environment.... A Recognized Museum is an institution that has demonstrated its commitment to public trust and service.... The AMA designates Recognized Museums so that museum visitors and supporters can find, enjoy, and contribute to institutions where the visitor is the top priority.”

2.5

ACTIVITY FIVE

Return of Cultural Property Request

(ongoing activity)

Staff from Museums and Collections Services and the Department of Anthropology worked with members of the Office of the Provost to realize the successful repatriation and reburial in October, 2014 of human remains and associated funerary objects related to the Sharphead burial site that were held in trust by the U of A in the Department of Anthropology since 1965. This resolution came following many years of open dialogue and consultation with the 14 affected First Nations bands as well as the Government of Alberta.

Following this successful repatriation, the staff of Museums and Collections Services will undertake an inventory of human remains that exist in other museum collections and will be recommending to the Policy and Planning Committee a procedure to move forward.

2.6

ACTIVITY SIX

Community Engagement

(ongoing activity)

Enterprise Square Galleries

In order to meet the Department of Canadian Heritage Category “A” designation as well as fulfill criteria by other granting agencies, the U of A Museums require access to permanent climate-controlled exhibition space to make museum collections publicly accessible via exhibitions. Since 2012, the University of Alberta Museums/Museums and Collections Services have presented exhibitions in the Enterprise Square Galleries. In the fall of 2013, the U of A entered a formal agreement with the City of Edmonton regarding a collaborative programming initiative designed to provide a venue for local artists in addition to the regular museum exhibitions featuring U of A specimens and artifacts. Through the Enterprise Square Galleries, the University of Alberta Museums bring fine arts, sciences, and humanities to the heart of downtown Edmonton, contributing to the growing vibrancy in our city’s core.





Enterprise Square Galleries *(continued)*

During the first year of the initiative with the City of Edmonton, considerable time was required to address operational practicalities. At the same time, the U of A Museums/Museums and Collections Services were also able to present an exciting and diverse program of exhibitions and events to Edmontonians. In the period between July 1, 2013 and October 31, 2014, we delivered 17 exhibitions (four community exhibitions, one exhibition from the Art Gallery of Alberta, and 12 University of Alberta Museums exhibitions.) The University of Alberta Museums raised ~\$400,000 in sponsorship and in-kind support for these exhibitions. There were more than 120 documented media stories, with dinosaurs and meteorites garnering the most media attention. Through exhibitions and programs at the Enterprise Square Galleries, the University of Alberta/Museums and Collections Services engaged ~17,000 museum visitors (including students, K-12 programs, and the general public) during this timeframe.

Education and Internship Programs

- The U of A Museums/Museums and Collections Services successfully delivered two sets of curriculum-based K-12 education programs to ~900 students at the Enterprise Square Galleries related to the *The World of Splash Ink* and *Sanaunguabik* exhibitions in the fall of 2013.
- Museums and Collections Services/U of A Museums hired two student interns for the summer of 2013 (Jaclyn Flaata, Anthropology, and Shannon Kraichy, Paleontology) as well as two for the summer of 2014 (Karen Fraser, Human Ecology, and Alice Lam, Anthropology), funded by Museums and Collections Services and an annual donation by the Friends of the University of Alberta Museums. Jaclyn, Shannon, Karen, and Alice undertook various projects in all areas of museum practice including cataloguing, conservation, collections management, digitization, exhibitions, education, and public programs.
- In the spring of 2014, we hired a temporary Museum Education Program Coordinator to develop and deliver education programming for the *Discovering Dinosaurs* exhibition in the fall of 2014.
- The board of the Friends of the University Museums recommended at their 2014 Annual General Meeting in October to, for the time being, dedicate funds raised through the bi-annual casinos as well as the endowment fund to the annual summer internship program and education programming to support the exhibitions presented at the Enterprise Square Galleries.



Recognition

The U of A Museums Hall of Fame was moved from the Ring House 1 administrative offices to the Enterprise Square Galleries in April, 2014 to provide public exposure to the researchers and support staff behind the important collections on campus.

Two curators, two collection support staff, and three volunteers were honoured at the annual U of A Museums Celebration in April, 2014.

- **Dr. Noorallah Juma**
Curator of the Soil Science Collection
For a decade, Dr. Juma was instrumental to the development and success of this important collection, ensuring that thousands of students, researchers, and community members learn about the skin of the earth and have access to the physical evidence of such.
- **Dr. Joseph Nelson**
Curator of the Zoology Museum (posthumous)
Revered by fish biologists around the world, Dr. Nelson was an advocate of the importance of museum records documenting the decline of species ranges, endangered species, and expansion of the ranges of invasive species. His importance to systematic ichthyology not only in Canada but also globally has been repeatedly recognized.
- **Dr. Andrew Locock**
Collections Manager, Mineralogy/Petrology, Meteorite, Drill Core, Invertebrate Paleontology, and Trace Fossil Collections
During his tenure, Andrew also stewarded the Mineralogy/Petrology and Paleontology Museums in the Earth Sciences Building. Known as one of the best mineralogists in Canada, Andrew has been a longtime advocate for the U of A Museums, and over the years facilitated access for thousands of university students, school-aged children, researchers, and the community.
- **Shirley Harpham**
Collection Technologist, Bryan/Gruhn Archaeology Collection
In addition to her day to day collections management work ensuring student and researcher access, managing the database, volunteers, and student labs, Shirley jumps at any chance to share her passion for the collection with the community through public programs.
- **Holly Sykora**
Volunteer, Friends of the University of Alberta Museums
Holly has been volunteering with the Friends board for more than seven years in various capacities including secretary and casino chair. She has personally ensured that there are an adequate number of capable volunteers to contribute to raising hundreds of thousands of dollars in vital support to the 29 museum collections on campus.
- **Kathy Frazer**
Volunteer, Clothing and Textiles Collection
Kathy has volunteered to work on the Rosenberg Quilt Collection, designated Canadian cultural property. Kathy has come full circle as a volunteer with this collection as she graduated from the Human Ecology department in the 1970s.
- **Colleen Nissen**
Volunteer, Clothing and Textiles Collection
Colleen also volunteered on the Rosenberg Quilt Collection and assisted with the reorganization of collection storage and processing new artifacts.

2013 | CURATORS HALL OF FAME



Fossil Fishes Collection
Curator

Mark Wilson

In 1968, Mark Wilson began his work as a paleontologist at the University of Alberta. He was instrumental in the discovery and excavation of the Burgess Shale, a world-famous fossiliferous rock formation. His work has led to the discovery of many new species of fossil fish, including the first fossil shark. He has also been instrumental in the development of the Fossil Fishes Collection at the University of Alberta.



The Burgess Shale is a world-famous fossiliferous rock formation. It is a type of shale that was deposited in a shallow sea about 500 million years ago. It is famous for the fossils it contains, which include many species of marine life that are not found elsewhere. The fossils are preserved in a way that allows them to be seen in detail, and they have provided a wealth of information about the life of the Cambrian period.

2011 | CURATORS HALL OF FAME



SPERMATOPHYTES, ARCHAEAL DNA AND TRANSDUCTION COLLECTIONS
Curators

Alan Bryan | Ruth Gruhn

Alan Bryan and Ruth Gruhn are two of the most prominent scientists in the world. They have made significant contributions to the fields of botany and genetics. Bryan is known for his work on the evolution of plants, and Gruhn is known for her work on the genetics of bacteria. Together, they have helped to advance our understanding of the natural world.



Alan Bryan and Ruth Gruhn are two of the most prominent scientists in the world. They have made significant contributions to the fields of botany and genetics. Bryan is known for his work on the evolution of plants, and Gruhn is known for her work on the genetics of bacteria. Together, they have helped to advance our understanding of the natural world.

2011 | CURATORS HALL OF FAME



PETROLOGY COLLECTION
Curator

Ronald Burwash

Ronald Burwash is a world-renowned geologist and petrologist. He has made significant contributions to the understanding of the Earth's crust and the formation of igneous rocks. He has also been instrumental in the development of the Petrology Collection at the University of Alberta.



Ronald Burwash is a world-renowned geologist and petrologist. He has made significant contributions to the understanding of the Earth's crust and the formation of igneous rocks. He has also been instrumental in the development of the Petrology Collection at the University of Alberta.

2011 | CURATORS HALL OF FAME



CLOTHING AND TEXTILES COLLECTION
Curator

Anne Lambert

Anne Lambert is a world-renowned textile curator and historian. She has made significant contributions to the understanding of the history of clothing and textiles. She has also been instrumental in the development of the Clothing and Textiles Collection at the University of Alberta.



Anne Lambert is a world-renowned textile curator and historian. She has made significant contributions to the understanding of the history of clothing and textiles. She has also been instrumental in the development of the Clothing and Textiles Collection at the University of Alberta.

2012 | CURATORS HALL OF FAME



MINERALOGY AND PALEONTOLOGY COLLECTIONS
Curator

John A. Allan

John A. Allan is a world-renowned mineralogist and paleontologist. He has made significant contributions to the understanding of the Earth's crust and the formation of minerals. He has also been instrumental in the development of the Mineralogy and Paleontology Collections at the University of Alberta.



John A. Allan is a world-renowned mineralogist and paleontologist. He has made significant contributions to the understanding of the Earth's crust and the formation of minerals. He has also been instrumental in the development of the Mineralogy and Paleontology Collections at the University of Alberta.

2012 | CURATORS HALL OF FAME



E. H. STRICKLAND ENTOMOLOGICAL MUSEUM
Curator

George Ball

George Ball is a world-renowned entomologist and collector. He has made significant contributions to the understanding of the life of insects and the formation of the E. H. Strickland Entomological Museum. He has also been instrumental in the development of the E. H. Strickland Entomological Museum at the University of Alberta.



George Ball is a world-renowned entomologist and collector. He has made significant contributions to the understanding of the life of insects and the formation of the E. H. Strickland Entomological Museum. He has also been instrumental in the development of the E. H. Strickland Entomological Museum at the University of Alberta.

ALBERTA MUSEUMS Hall of Fame



2013 | OUTSTANDING SERVICE



Danny Shpeley
SPECIAL COLLECTIONS
MANAGER

Danny Shpeley has been instrumental in the development and growth of the Special Collections department. He has successfully managed the transition of the department from a small unit to a fully-fledged department, overseeing the acquisition, care, and display of a wide range of special collections. His leadership and dedication have been instrumental in ensuring the long-term preservation and accessibility of these valuable resources.




For more information, please contact: dshpeley@ualberta.ca

2013 | OUTSTANDING SERVICE



Dorothy Fabijan
UNIVERSITY HERBARIUM
MANAGER

Dorothy Fabijan has been a key figure in the management and development of the University Herbarium. She has successfully managed the transition of the herbarium from a small unit to a fully-fledged department, overseeing the acquisition, care, and display of a wide range of plant specimens. Her leadership and dedication have been instrumental in ensuring the long-term preservation and accessibility of these valuable resources.




For more information, please contact: dfabijan@ualberta.ca

2014 | CURATORS HALL OF FAME



Noorallah Juma
SOIL SCIENCE
COLLECTION
MANAGER

Noorallah Juma has been instrumental in the development and growth of the Soil Science Collection. He has successfully managed the transition of the collection from a small unit to a fully-fledged department, overseeing the acquisition, care, and display of a wide range of soil specimens. His leadership and dedication have been instrumental in ensuring the long-term preservation and accessibility of these valuable resources.




For more information, please contact: njuma@ualberta.ca

2014 | CURATORS HALL OF FAME




Joseph Nelson
MUSEUM OF ZOOLOGY
SCIENTIST

Joseph Nelson has been instrumental in the development and growth of the Museum of Zoology. He has successfully managed the transition of the museum from a small unit to a fully-fledged department, overseeing the acquisition, care, and display of a wide range of zoological specimens. His leadership and dedication have been instrumental in ensuring the long-term preservation and accessibility of these valuable resources.






For more information, please contact: jnelson@ualberta.ca

2014 | OUTSTANDING SERVICE



Andrew Locock
MINERALOGY
PETROLOGY
METEORITE
IDENTIFICATION
AND TRACE FOSSIL
COLLECTIONS
COLLECTIONS MANAGER

Andrew Locock has been instrumental in the development and growth of the Mineralogy, Petrology, Meteorite Identification, and Trace Fossil Collections. He has successfully managed the transition of these collections from a small unit to a fully-fledged department, overseeing the acquisition, care, and display of a wide range of mineralogical and petrological specimens. His leadership and dedication have been instrumental in ensuring the long-term preservation and accessibility of these valuable resources.

For more information, please contact: alocock@ualberta.ca

2014 | OUTSTANDING SERVICE



Shirley Harpham
BRITISH COLUMBIA
ARCHAEOLOGY
COLLECTION
MANAGER

Shirley Harpham has been instrumental in the development and growth of the British Columbia Archaeology Collection. She has successfully managed the transition of the collection from a small unit to a fully-fledged department, overseeing the acquisition, care, and display of a wide range of archaeological specimens. Her leadership and dedication have been instrumental in ensuring the long-term preservation and accessibility of these valuable resources.




For more information, please contact: sharpham@ualberta.ca



2.7

ACTIVITY SEVEN

Funding Needs Adjudication

(annual activity)

The Policy and Planning Committee adjudicated the annual funding needs requests submitted by faculty curators of registered academic museum collections. Although **\$86,916** was requested for museum projects in 2013-14, only **\$53,494*** was distributed based on available funds. Funding sources available to the U of A Museums in 2013-14 include:

- Community Outreach Endowment Fund: a U of A Museums fund which generated approximately \$8500 in 2013-14.
- The Friends of the University of Alberta Museums, who raise and donate funds for projects, totaling \$27,000 in 2013-14.
- Selected grant programs coordinated by Museums and Collections Services, including Young Canada Works in Heritage and the Alberta Museums Association.
- \$15,000 was funded through other sources (e.g., integrated into existing projects).

In addition to funding coordinated via Museums and Collections Services, designated academic curators and collections staff are actively involved in research**; much of which relates to academic museum collections.

* See Appendix E, Section One for detailed funding information.

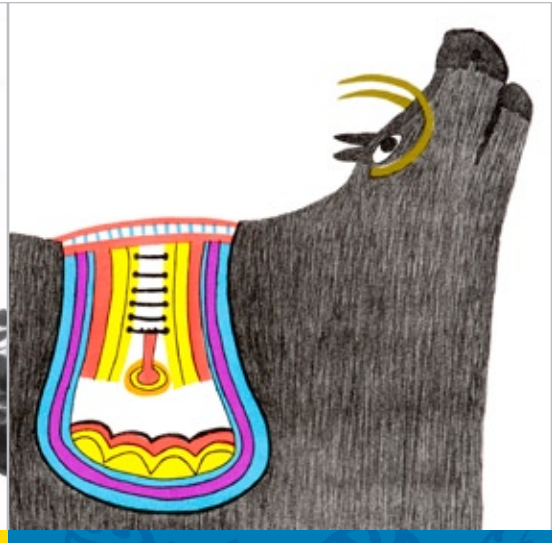
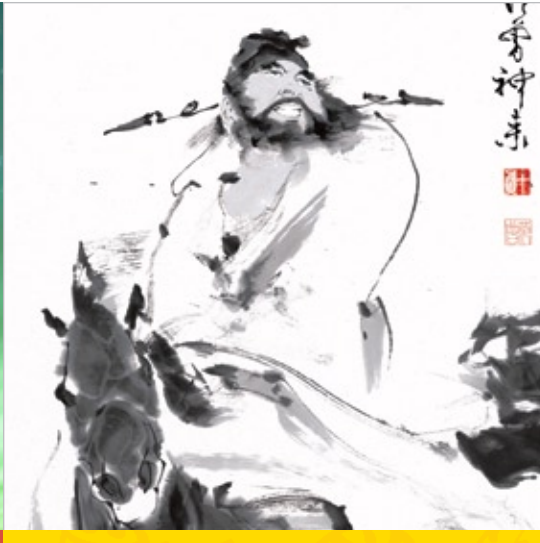
** See Appendix E, Section Two for detailed funding information. This chart is generated by the Research Services Office and is based on the fiscal rather than academic year. Though it provides a decent snapshot reflecting the incredible amount of work by the extremely talented pool of academic curators under the U of A Museums umbrella, the information provided in the chart generated from the Research Services Office does not capture the full and complete picture of all funding received by curators from sources not processed through the RSO. For example, in 2013/14 alone, the Bohdan Medwidsky Ukrainian Folklore Archives at the Kule Folklore Centre, led by professor and curator Andriy Nahachewsky, received \$20,000 from the Ukrainian Millennium Society, \$4750 from the Ukrainian Pioneers Association of Canada, and approximately \$20,000 of in-kind support from the Friends of the Ukrainian Folklore Centre.

INTERNATIONAL REACH THROUGH RESEARCH NETWORKS

Staff of Museums and Collections Services worked with several U of A Museums collections (E.H. Strickland Entomological Museum, Vascular Plant Herbarium, and the Cryptogamic Herbarium) as part of a Canadian Foundation for Innovation (CFI) project to supply collections data to other research institutions via Canadensys and the Global Biodiversity Information Facility (GBIF). Configuring an Integrated Publishing Toolkit (IPT) on our central server facilitates sharing critical collections-based information through this international research network. Plans are underway to add data from more U of A Museums collections to GBIF via the IPT in the future.



**EXHIBITIONS:
ENGAGING THE
COMMUNITY**



When the Sky Falls

July 30 – August 3, 2013

This was the first pop-up-style exhibition in Gallery A at the Enterprise Square Galleries tied to U of A Museums mission to present timely and topical exhibitions related to current U of A research. This exhibition featured meteorites from the U of A collection and also from the Chelyabinsk, Russia fireball (shown for the first time in Canada) and coincided with the 76th annual meeting of the International Society for Meteoritics and Planetary Science. *When the Sky Falls* received national media attention and drew in more than 1200 visitors in just five days.

**The World of Splash Ink:
Painting and Calligraphy
by Professor FAN Zeng**

October 1 – November 2, 2013

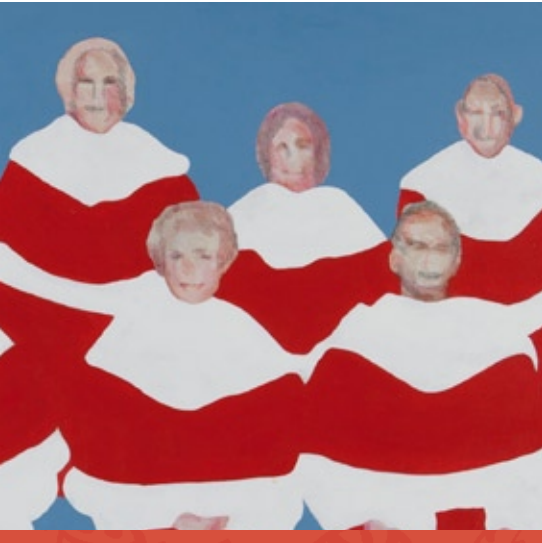
The U of A was the exclusive North American exhibition host for Professor FAN's work, an artist revered in his home country (China) for reviving the splendor of the Chinese art tradition. This provided an excellent opportunity to engage with the local community and also focus on institutional messaging that the U of A is a leader in Canada-China partnerships. It also provided invaluable occasion to engage grassroots funding and promotion, garnering international media coverage. Museums and Collections Services/ the U of A Museums initiated sponsorship relationships for our K-12 educational programs with Servus Credit Union and the Government of Alberta.

**Sanaunguabik:
Traditions and
Transformations
in Inuit Art**

October 1 – December 21, 2013

This exhibition showcased a strength of the U of A Art Collection—Inuit prints—and traced the development of Inuit art over 65 years, exploring the history of the studio movement in the Canadian Arctic.





Pop Goes Canadiana: Iconic Art by Charles Pachter

November 1–30, 2013

This exhibition featured the work of a recent, generous gift from an important contemporary Canadian artist, Charles Pachter. Timing allowed a tie-in with the Festival of Ideas event with Margaret Atwood, herself an important artistic collaborator in Pachter's early years. Museums and Collections Services/the U of A Museums also presented a well-received and relevant artist talk to the burgeoning artists in the Edmonton community, "How to succeed as a contemporary Canadian artist."



DinoStars

February 6 – March 8, 2014

This pop-up exhibition presented the exciting recent discoveries out of the U of A's Laboratory for Vertebrate Paleontology, the baby *Chasmosaurus belli* and the mummified *Edmontosaurus regalis*. Following global media attention as well as the success of Dino 101, the U of A's first MOOC, *DinoStars* gave the community an opportunity to see the real dinosaur specimens behind these discoveries. It also stoked the interest for a fall exhibition with a broader scope to showcase why the University of Alberta is a global leader in dinosaur and paleontological research.

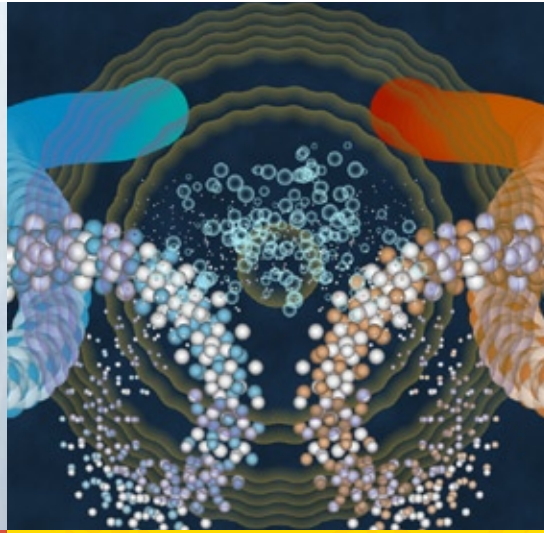


Fresh Paint

February 6 – April 26, 2014

Showcasing a sampling of current community artwork, *Fresh Paint* demonstrated that local painters remain passionately committed to their discipline, in spite of the common trend toward experimentation across discipline and media.

EXHIBITIONS:
ENGAGING THE
COMMUNITY



**Duets:
Shared Ideas
in Painting**

February 6 – April 26, 2014

Serving as a companion exhibition to *Fresh Paint*, *Duets* tied the U of A art collection to current community practices, pairing different interpretations of ideas and concepts that painters past and present draw upon in their search for self-expression.

**Visual Music:
Five Films
by John Osborne**

February 6 – March 29, 2014

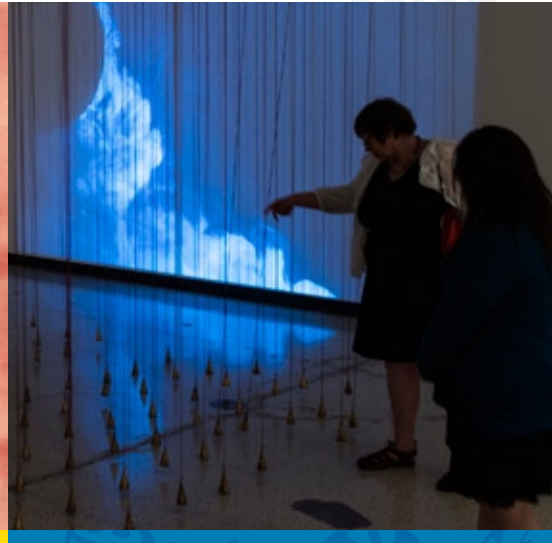
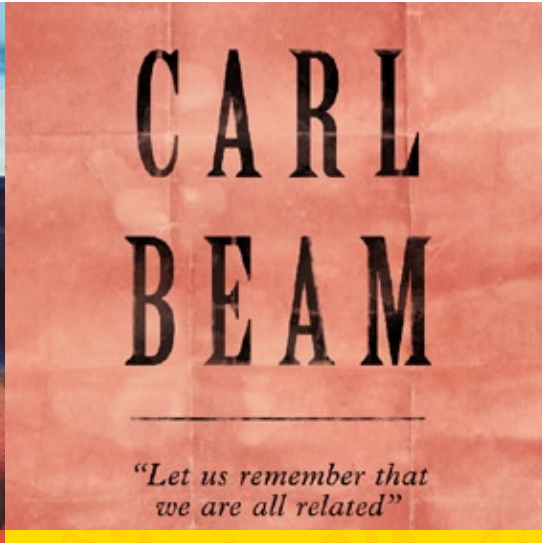
This was one of the first exhibitions chosen from the community call for proposals which garnered 19 submissions. Previously shown at film festivals in North America and Europe, three of the five films were set to music by Edmonton composers/musicians.

**Cross-Contamination:
An exhibition of works
by the Staff and
Collective at the Nina**

February 6 – March 29, 2014

Presenting a survey of artworks from the collective of artists with developmental disabilities who work at the Nina Haggery Centre for the Arts integrated with artwork from the team of professional artists who work at the Nina, this community exhibition was well-received by both museum visitors and local media.





kiyas aspin

March 27 – May 24, 2014

This exhibition was a collaboration with Aboriginal Affairs and Northern Development Canada to present 26 artworks by Alberta artists. The works presented were part of the former Alberta Indian Arts and Crafts Association Collection. The timeframe coincided with the final Truth and Reconciliation event in Edmonton.

Carl Beam: “Let us remember that we are all related”

March 27 – May 24, 2014

Thematically tied with the Truth and Reconciliation event in Edmonton and in response to *kiyas aspin*, this exhibition showed recent acquisitions to the U of A Art Collection of work by a key figure in Canadian art history in the 20th century. Beam, who was a graduate student at the U of A, exemplifies a generation of Canadian Aboriginal artists who made cultural identity an explicit and politicized aspect of their work.

Regions of Distinction: Edmonton Members of the Royal Canadian Academy

April 24 – October 25, 2014

This exhibition was the first presented by the Art Gallery of Alberta at the Enterprise Square Galleries as part of the initiative with the City of Edmonton. It timed with the RCA's 2014 Annual General Assembly in Edmonton in May, 2014. The Edmonton members of the RCA are recognized for their impact within Alberta but also on the national arts scene.

EXHIBITIONS: ENGAGING THE COMMUNITY



Forging a Nation: Canada Goes to War

June 5 – August 16, 2014

Working with the University of Calgary and the Princess Patricia's Canadian Light Infantry Foundation, the U of A Museums presented this traveling exhibition featuring more than 60 works of art from some of the best collections of war art from around the world. Timing coincided with the centennial celebration for PPCLI and the 100th anniversary of the start of WWI. A reception in August with special guest The Right Honourable Adrienne Clarkson, Colonel-in-Chief (PPCLI), strengthened the U of A's longstanding military ties and was attended by key dignitaries including Linda Duncan, MP (Edmonton Strathcona).

Frosh 1965: Photographs by Norman Kreye

July 17 – August 30, 2014

Another exciting exhibition from the community call for proposals, Frosh 1965 presented photographs by a County of Parkland bus driver, offering an interesting retrospective glimpse into student life during the 1960s and '70s.

Allen Ball - That Shepherd: Righteousness

July 17 – September 27, 2014

Featuring the work of a pillar in the Edmonton arts community and a revered U of A painting professor, *That Shepherd: Righteousness* served as a brilliant companion exhibition to Forging a Nation. Allen Ball was a participant in the Canadian Forces Artist Program in 2007 in Northern Egypt, and the resulting series of 12 paintings reflects his tour of duty.



Def Perspectives: Paintings and Drawings by Jesse Thomas

September 11 – October 25, 2014

Def Perspectives was selected from the second community call for exhibition proposals. An assistant professor in painting at the U of A, Jesse Thomas' paintings are designed to test the narrative limits of static pictorial space in relation to cinema, the novel, and virtual spaces and experiences.



Discovering Dinosaurs

September 18 – January 31, 2014

This exhibition aims to inspire a new generation of dinosaur enthusiasts by introducing the current generation of U of A researchers who are changing our understanding of dinosaurs and their lost world. In the first two months of the exhibition, six publications were released, the research from which was highlighted in *Discovering Dinosaurs*, showcasing why the University of Alberta is a global leader in dinosaur and paleontological research and how museum collections are critical to the support of these initiatives.


As Discovering Dinosaurs is ongoing to 2015, full details will be provided in the 2014-15 annual report.

JURASSIC GENERATION POSTERGIRL

Shannon Kraichy
Aims to Inspire
Future Generations

How do you nurture a childhood passion for ancient creatures into a career? Like so many children, Shannon Kraichy discovered her love for dinosaurs at an early age. “Most kids grow out of the dinosaur phase, but I never did. So naturally, I wanted to be a paleontologist when I grew up,” she says.





A self-professed “Jurassic Park Generation” kid, Shannon was drawn to the University of Alberta’s paleontology program, based on its international reputation, renowned faculty and staff, and unique offering of field schools at the undergraduate level, graduating with a BSc in Paleontology in the spring of 2013.

“I only recently discovered how I want to use my paleontology degree,” Shannon says. “My real ‘aha’ moment came when I looked back at my previous work and volunteer experience. I realized I was already doing what I loved - teaching the public about prehistoric life.” Shannon found herself gravitating toward jobs and experiences such as leading museum tours and hikes to fossil sites. “That’s what led me to museums,” she says, noting they’re the perfect forum to share her knowledge.

Shannon spent the summer months in 2013 with the central campus team of museum professionals as a successful candidate in the prestigious Friends of the University of Alberta Museums Summer Internship. “We were delighted to have Shannon as one of our interns,” says Janine Andrews, Executive Director of the U of A Museums. “It’s inspiring for our staff to get a fresh perspective every year from such accomplished students.” Shannon got hands-on experience with the U of A’s internationally-renowned museum collections, working in collections management, conservation, research, exhibitions, programming, and community engagement.

Shannon credits her experiences at the U of A as motivating her to pursue a career in paleontology and museums. “So many of my professors have been amazing influences on me,” she says, noting in particular Philip Currie, Curator of Dinosaurs, and Lindsey Leighton, Curator of Invertebrate Paleontology. “Growing up, I only heard about male paleontologists, so it was so inspiring to see women could be extremely successful scientists in a still male-dominated field,” Shannon notes, mentioning Alison Murray, Curator of the U of A Museum of Zoology, Eva Koppelhus, Angelica Torices, Miriam Reichel, and Victoria Arbour.

Just as her professors have done for her, Shannon’s goal is to inspire future generations with her passion for paleontology. Following her internship with the U of A Museums, Shannon completed a Masters in Museum Education at the University of British Columbia. “Museum education offers me such a dynamic and flexible future,” she says. “This program mirrors the changed role of museums as simply ‘places to store objects’ into exciting places to educate and engage the community, focused on all age groups, in any setting.”

To those aspiring to follow in her footsteps, Shannon has some advice to share: “Get involved, but in things you love doing.” In her “spare” time on campus, Shannon volunteered as both VP Internal on the Aboriginal Student Council and VP External for the Paleontological Society. “My involvement in the community has opened so many doors and connected me to wonderful people, but only because I had a passion for what I was doing.”

Appendices

A Policy and Planning
Committee Membership 2013–14

B Directory of Registered Collections
of the University of Alberta Museums

C Museums and Collections Services Staff

D Friends of the University of Alberta Museums
Board of Directors 2013–14

E Detailed Funding Report

A

POLICY AND PLANNING COMMITTEE MEMBERSHIP 2013–14

Chair**Heather Proctor**

*Curator, Freshwater
Invertebrates Collection
and Chair, Curators Committee*
Department of Biological
Sciences

Ex Officio (voting)**Janine Andrews**

*Executive Director, University
of Alberta Museums*

Rosalind Sydie

*President, Friends of the
University of Alberta Museums*

**General Faculties Council
(elected)****Andrew Greenshaw**

Department of Psychiatry

Joseph Patrouch

Department of History
and Classics

**Curators Committee
(elected)****Jocelyn Hall**

*Curator, Vascular Plant
Herbarium*
Department of Biological
Sciences

Pamela Mayne Correia

*Curator, Bryan/Gruhn
Ethnographic Collection, Fossil
Hominid Cast Collection,
Osteology Collection*
Department of Anthropology

Andriy Nahachewsky

*Curator, Bohdan Medwidsky
Ukrainian Folklore Archives*
Department of Modern
Languages and Cultural
Studies

Allen Shostak

Curator, Parasite Collection
Department of Biological
Sciences

**Undergraduate Student
Representative****Victoria Obiefuna**

Faculty of Science

**Graduate Students'
Association
Representative (elected)****Maryna Chernyavska**

School of Library and
Information Studies

**Committee Secretariat
(non-voting)****Frannie Blondheim**

*Associate Director, University
of Alberta Museums (Issues
Management)*

B

DIRECTORY OF REGISTERED COLLECTIONS OF THE UNIVERSITY OF ALBERTA MUSEUMS

Faculty of Arts

Department of Anthropology

Bryan/Gruhn Archaeology Collection

Curator: Pamela Willoughby

Bryan/Gruhn Ethnographic Collection

Curator: Pamela Mayne Correia

Fossil Hominid Cast Collection

Curator: Pamela Mayne Correia

Osteology Collection

Curator: Pamela Mayne Correia

Zooarchaeology Reference Collection

Curator: Robert Losey

Department of History and Classics

W.G. Hardy Collection of Ancient
Near Eastern and Classical Antiquities

Curator: Jeremy Rossiter

Department of Modern Languages and Cultural Studies

Bohdan Medwidsky Ukrainian Folklore Archives

Curator: Andriy Nahachewsky

Department of Music

Canadian Centre for Ethnomusicology

Curator: Regula Qureshi

Faculty of Agricultural, Life and Environmental Sciences

Devonian Botanic Garden

Devonian Botanic Garden Herbarium

Curator: René Belland

Department of Human Ecology

Clothing and Textiles Collection

Curator: Anne Bissonnette

Department of Renewable Resources

Renewable Resources

Natural History Collection

Curator: John Acorn

Soil Science Collection

Curator: Scott Chang

Faculty of Medicine & Dentistry

Department of Laboratory Medicine and Pathology

Pathology Gross Teaching Collection

Curator: David Rayner

School of Dentistry

Dentistry Museum Collection

Curator: Loren Kline

Faculty of Science

Department of Biological Sciences

Cryptogamic Herbarium

Curator: Catherine La Farge

Vascular Plant Herbarium

Curator: Jocelyn Hall

Paleobotanical Collection

Curator (Acting): Michael Caldwell

E.H. Strickland Entomological Museum

Curator: Felix Sperling

Freshwater Invertebrate Collection

Curator: Heather Proctor

Jim van Es Marine Invertebrate and Malacology Collection

Curator: Richard Palmer

Museum of Zoology

*Curator: Cindy Paszkowski (Amphibian and
Reptile Collection / Ornithology Collection)*

Curator: Alison Murray (Ichthyology Collection)

*Curator: Andrew Derocher (Mammalogy
Collection)*

Parasite Collection

Curator: Allen Shostak

Laboratory for Vertebrate Paleontology

Curator: Michael Caldwell (Higher Vertebrates)

Curator: Philip Currie (Dinosaur Collection)

Curator: Alison Murray (Fossil Fishes Collection)

Department of Earth and Atmospheric Sciences

Drill Core Collection

Curator: John-Paul Zonneveld

Invertebrate Paleontology Collection

Curator: Lindsey Leighton

Meteorite Collection

Curator: Christopher Herd

Mineralogy and Petrology Collection

Curator: Tom Chacko

Trace Fossil Collection

Curator: Murray Gingras

Museums and Collection Services

University of Alberta Art Collection

Curator: Jim Corrigan (on leave)

Acting curator: Janine Andrews

Mactaggart Art Collection

Curator: Vacant

C

MUSEUMS AND COLLECTIONS SERVICES STAFF

Janine Andrews

Executive Director

Lindsay Anglestad

*Administrative Assistant
(until July 2014)*

Frannie Blondheim

Associate Director

Jennifer Bowser

*Curatorial Assistant,
Mactaggart Art Collection
(until May 2014)
Collections Assistant
(starting June 2014)*

Jim Corrigan

*Curator, University of Alberta
Art Collection (on leave)*

Matthew Hills

*Assistant Curator, University
of Alberta Art Collection*

Tom Hunter

*Collections Assistant,
University of Alberta
Art Collection*

Denis La France

Senior Systems Administrator

Christina Marocco

Administrative Team Lead

Erin McDonald

*Collections Management
Advisor (until January 2014)*

Jennifer Pascoe

*Communications and
Marketing Coordinator*

Riva Symko

*Gallery Lead,
Enterprise Galleries*

Jim Whittome

*Information Management
Advisor*

**Museums and Collections
Services Temporary Staff**

Jaclyn Flaata

Intern (Summer 2013)

Karen Fraser

Intern (Summer 2014)

Shannon Kraichy

Intern (Summer 2013)

Alice Lam

Intern (Summer 2014)

Kelsie Sharun

*Education Program
Assistant (temporary
contract from April 2014)*

Nomi Stricker

*Curatorial Assistant, University
of Alberta Art Collection
(contract to June 2014)*

D

FRIENDS

**Friends of the
University of Alberta
Museums Board of
Directors 2013-14:**

Rosalind Sydie

President

Tom Kieren

Past President

Stephanie Huolt

Treasurer

Holly Sykora

Casino/Secretary

Dennis Brooks

Director-at-Large

Eleanor McAllister

Director-at-Large

E

DETAILED FUNDING REPORT

Section One

The following information provides detailed funding for museum and collection projects between July 1, 2013 and June 30, 2014:

The Friends of the University of Alberta Museums (\$52,000)

Department of Biological Sciences – Vascular Plant Herbarium (\$7000)

Hire student to process recent acquisition of seasonal dynamic specimens.

Department of Human Ecology – Clothing and Textiles Collection (\$20,000)

Purchase of artifacts, period-specific mannequins, and associated storage.

Museums and Collections Services (\$25,000)

For the annual “Friends of the U of A Museums 25th Anniversary Student Internship in Museum Innovation”

Community Outreach Endowment Fund (\$8033)

Department of Anthropology – Bryan/Gruhn Archaeology Collection (\$6883)

Historic Catalogue Assessment, Collection Digitization, and Database Management projects

Department of Biological Sciences – E.H. Strickland Entomological Museum (\$850)

Purchase of new digital camera to populate species pages on web-accessible database.

Department of Biological Sciences – Vascular Plant Herbarium (\$300)

New books used in collection for plant identification

E

DETAILED FUNDING REPORT (CONTINUED)

Section Two

The following table provides details of research grants received by academic curators responsible for individual museums and collections at the University of Alberta. This chart is generated centrally by the Research Services Office and reflects grants with funds awarded within the fiscal (April 1, 2013 to March 31, 2014) rather than academic year (July 1, 2013 to June 30, 2014).

Project Manager	Role	Research Contributions	Financial Sponsor	Project Description	Start Date	End Date	Long Description
Belland, Rene	Principal Investigator	1,000.00	Sales of Goods & Services	Gen Res - Belland,Rene Jean	2005/05/01	2022/03/31	General research funds Belland
Caldwell, Michael	Principal Investigator	90.00	CDN Business - Various	Don-Vertebrate Paleo Caldwell	2007/10/29	2017/10/31	Research donations Caldwell
Caldwell, Michael	Principal Investigator	3,360.00	Individual Donors	Don-Vertebrate Paleo Caldwell	2007/10/29	2017/10/31	Research donations Caldwell
Caldwell, Michael	Principal Investigator	50,000.00	NSERC	NSERC RGPIN 238458 Caldwell	2011/04/01	2017/03/31	Vertebrate paleontology of terrestrial and marine squamates: testing the relationships of lepidosauria within sauropsida
Caldwell, Michael	Principal Investigator	40,000.00	NSERC	NSERC RGPAS 412275 Caldwell	2011/04/01	2015/03/31	Vertebrate Paleontology of Terrestrial and Marine Squamates: Testing the Relationships of Lepidosauria within Sauropsida
Caldwell, Michael	Principal Investigator	40,000.00	NSERC	NSERC RGPIN 9180 Wilson	2012/04/01	2018/03/31	Morphology, homology, phylogeny, and biogeography of early vertebrates and fossil fishes
Caldwell, Michael	Chair	8,000.00	AB Biodiversity Mntr Inst ABMI	ABMI sti Liu/Proctor	2013/04/01	2014/05/31	Distribution patterns of non-biting midges (Diptera:Chironomidae) in Alberta
Caldwell, Michael	Chair	31,601.47	Circle T Consulting Inc.	CTCI LaFarge/Chair	2013/08/26	2014/02/28	Suncor Road Reclamation Project
Chacko, Thomas	Principal Investigator	28,000.00	NSERC	NSERC RGPIN 46751 Chacko	2011/04/01	2017/03/31	Evolution of Earth's Crust: experimental and field-based studies
Chacko, Thomas	Principal Investigator	15,000.00	NSERC	NSERC RGPNS 408428 Chacko	2011/04/01	2017/03/31	Petrogenesis of Acasta Gneisses, NWT
Chang, Scott	Principal Investigator	149,558.16	Agriculture AgriFood Canada	AAFC AGGP 1585-16-3-3-21 Chang	2011/12/12	2015/08/31	Quantifying carbon sequestration and greenhouse gas emissions in planted shelterbelts natural hedgerows and riparian woodlands in different soil-climatic zones in Alberta.
Chang, Scott	Principal Investigator	17,825.00	Suncor Energy Inc	MULTI CONRAD Field Testing Cha	2013/01/01	2015/12/31	Field Testing of the Growth of Nutrient Loaded Seedlings for Land Reclamation in the Oil Sands
Chang, Scott	Principal Investigator	17,825.00	Imperial Oil Resources Limited	MULTI CONRAD Field Testing Cha	2013/01/01	2015/12/31	Field Testing of the Growth of Nutrient Loaded Seedlings for Land Reclamation in the Oil Sands
Chang, Scott	Principal Investigator	17,825.00	Total EP Canada Ltd	MULTI CONRAD Field Testing Cha	2013/01/01	2015/12/31	Field Testing of the Growth of Nutrient Loaded Seedlings for Land Reclamation in the Oil Sands

Project Manager	Role	Research Contributions	Financial Sponsor	Project Description	Start Date	End Date	Long Description
Chang, Scott	Principal Investigator	17,825.00	Shell Canada Energy	MULTI CONRAD Field Testing Cha	2013/01/01	2015/12/31	Field Testing of the Growth of Nutrient Loaded Seedlings for Land Reclamation in the Oil Sands
Chang, Scott	Principal Investigator	200,000.00	Total EP Canada Ltd	TEPCL Chang	2012/10/29	2015/12/31	Salt movement and salinity
Chang, Scott	Principal Investigator	40,000.00	NSERC	NSERC RGPIN 249664 Chang	2013/04/01	2019/03/31	Carbon forms and fluxes in different land use systems
Chang, Scott	Principal Investigator	16,800.00	AB Innovates-Tech Futures	ABITF BIOR 16402-2014 Chang	2013/05/01	2016/03/31	Agricultural benefits of biochar application reducing salinity and leaching of phosphorus from soils
Currie, Philip	Supervising Investigator	8,000.00	CDN Business - Various	Donation-Dinosaur Inst Studshp	2007/03/12	2017/02/11	Research donations Currie
Currie, Philip	Principal Investigator	64,000.00	NSERC	NSERC RGPIN 203091 Currie	2011/04/01	2017/03/31	Palaeobiology (anatomy, biomechanics, interrelationships, palaeobiogeography, palaeoecology of Cretaceous dinosaurs)
Currie, Philip	Principal Investigator	23,530.00	Canada Research Chairs	CRCTier 1227986 CurrieRA	2012/10/01	2019/09/30	Canada Research Chair in Dinosaur Paleobiology
Derocher, Andrew	Principal Investigator	3,000.00	CDN Business - Various	Multi Don Polar Bear Research	2007/07/02	2015/12/31	Research donations Derocher
Derocher, Andrew	Principal Investigator	19,500.00	NCE ArcticNet	ArcticNet Derocher	2011/04/01	2015/03/31	Impacts of Global Warming on Arctic Marine Mammals
Derocher, Andrew	Principal Investigator	110,000.00	Environment Canada	EC 1107832 Derocher	2011/08/05	2015/03/31	Sea ice habitat selection, movement dynamics, and conservation of polar bears in a changing Arctic.
Derocher, Andrew	Principal Investigator	42,000.00	NSERC	NSERC RGPIN 261231 Derocher	2013/04/01	2019/03/31	Understanding change in Arctic marine ecosystems: polar bears as ecological indicators
Derocher, Andrew	Principal Investigator	22,000.00	NSERC	NSERC RGPNS 305472 Derocher	2013/04/01	2019/03/31	Understanding change in Arctic marine ecosystems: polar bears as ecological indicators
Derocher, Andrew	Principal Investigator	40,000.00	World Wildlife Fund Canada	WWFC G-0314-031-00-D Derocher	2013/07/04	2014/06/01	Polar Bear Sea Ice Habitat: Future Scenarios in the Arctic Archipelago
Derocher, Andrew	Principal Investigator	2,633.00	NCE ArcticNet	NCEArctNet Derocher/Viengkone	2013/04/01	2014/03/31	Training Fund 2013-2014
Gingras, Murray	Principal Investigator	35,000.00	NSERC	NSERC RGPIN 238530-2010 Gingra	2010/04/01	2015/03/31	Expanding the potential of trace fossil analysis for practical applications
Gingras, Murray	Principal Investigator	39,700.00	Murphy Oil Company Ltd.	MOCL CRDPJ 452759-13 Gingras	2013/04/01	2016/03/31	A core study of the Bluesky Foundation

Project Manager	Role	Research Contributions	Financial Sponsor	Project Description	Start Date	End Date	Long Description
Gingras, Murray	Principal Investigator	51,410.00	NSERC	NSERC CRDPJ 452759-13 Gingras	2013/10/07	2016/10/06	Sedimentological and lchnological analysis of the cretaceous bluesky formation (Alberta) to better understand the depositional environment and stratigraphy of the interval
Hall, Jocelyn	Principal Investigator	30,660.00	NSERC	NSERC rgpin 341656-07 Hall,J	2007/04/01	2015/03/31	Phylogenetics an morphological diversification in capparaceae, cleomaceae, and brassicaceae
Herd, Christopher	Principal Investigator	3,055.00	Sales of Goods & Services	Gen Res - Herd,Christopher	2005/11/01	2022/03/31	General research funds Herd
Herd, Christopher	Principal Investigator	33,000.00	NSERC	NSERC RGPIN 261740 Herd	2013/04/01	2019/03/31	Understanding the geologic evolution of the solar system through studies of meteorites
Kline, Loren	Principal Investigator	8,500.00	CDN Business - Various	Gen Res - Kline,Loren W	1999/02/01	2022/03/31	General research funds Kline
Kline, Loren	Principal Investigator	8,500.00	Sales of Goods & Services	Gen Res - Kline,Loren W	1999/02/01	2022/03/31	General research funds Kline
Leighton, Lindsey	Principal Investigator	22,000.00	NSERC	NSERCrgpin 372615-2009 Leighton	2009/04/01	2015/03/31	Assessing predation through time and space
Losey, Robert	Principal Investigator	15,046.02	Gerda Henkel Stiftung	GerdaHenkelFdn AZ06/ZA/13Losey	2013/07/01	2015/06/30	An Osteoarchaeology of Pastoralism in Cis-Baikal, Russia
Murray, Alison	Principal Investigator	33,000.00	NSERC	NSERC RGPIN 327448 Murray	2013/04/01	2019/03/31	Paleontology of freshwater and marine fishes: Evolution of the modern faunas
Paszkowski, Cynthia	Principal Investigator	34,000.00	NSERC	NSERC RGPIN 121402-2010 Paszko	2010/04/01	2016/03/31	The roles of habitat and interspecific interactions in the ecology of amphibians
Paszkowski, Cynthia	Principal Investigator	7,510.00	AB Conservation Association	ACA GECE 030-00-90-187 Paszkow	2013/04/01	2014/03/31	Using wetland- dependent wildlife to monitor landscape change
Paszkowski, Cynthia	Supervising Investigator	5,000.00	AB Sport Recreat Parks WL Fndn	ASRPWF DIP Atkinson/ Paszkowski	2013/04/01	2014/12/31	Movement and habitat use of long- toed salamanders in Waterton Lakes National Park
Paszkowski, Cynthia	Principal Investigator	16,566.38	R LnL Environmental Services Ltd	GAL 13-1337-0004 Paszkowski	2013/07/17	2013/12/31	Wood Frog Larval Survival and Growth in Oil Sands Water
Paszkowski, Cynthia	Supervising Investigator	1,500.00	Friends Elk Island Society	FELS Welsh/ Paszkowski	2013/05/01	2014/03/31	Western Tiger Salamander terrestrial habitat use in the Beaver Hills
Paszkowski, Cynthia	Supervising Investigator	16,281.00	Canadian Wildlife Federation	CWF ESF Welsh/ Paszkowski	2014/01/01	2015/03/01	Western Tiger Salamander (Ambystoma mavortium) Distribution and Habitat Use in Central Alberta

Project Manager	Role	Research Contributions	Financial Sponsor	Project Description	Start Date	End Date	Long Description
Proctor, Heather	Principal Investigator	3,644.75	Sales of Goods & Services	Gen Res - Proctor,Heather	2004/07/01	2022/03/31	General research funds Proctor
Proctor, Heather	Principal Investigator	27,000.00	NSERC	NSERC RGPIN 261485 Proctor	2013/04/01	2019/03/31	Habitat and meta- habitat: influence of environment and colonization history on co- distribution of hosts and symbionts.
Proctor, Heather	Supervising Investigator	2,000.00	AB Biodiversity Mntr Inst ABMI	ABMI ra Liu/Proctor	2013/04/01	2014/05/31	Distribution patterns of non-biting midges (Dipteria:Chironomidae) in Alberta
Sperling, Felix	Principal Investigator	99,183.00	AB Innovates-Bio Solutions	ABIBS VCS-11-034 Sperling	2012/05/01	2015/04/30	Multi-species ecogenomics of spruce budworm outbreaks in Alberta forests
Sperling, Felix	Principal Investigator	60,000.00	NSERC	NSERC RGPIN 217174 Sperling	2013/04/01	2019/03/31	Systematics, diversity & speciation of Lepidoptera
Willoughby, Pamela	Principal Investigator	36,375.00	SSHRC	SSHRC SRG 410-2011-0117 Willou	2011/04/01	2015/03/31	The Evolution of Modern Humans in southern Tanzania: Further investigations by the Iringa Region Archaeological Project
Willoughby, Pamela	Chair	10,938.52	University of Aberdeen	UAberd ERC AN003 RGE0715 Losey	2012/07/01	2015/06/30	Arctic Domus
Zonneveld, John-Paul	Principal Investigator	53,000.00	NSERC	NSERC rgpin 371662-09 Zonnevel	2009/04/01	2014/11/30	Stratigraphic arcitecture & depositional evolution of the upper triassic Charlie Lake formation.
Zonneveld, John-Paul	Principal Investigator	24,000.00	Talisman Energy Inc	TEI Zonneveld	2013/01/01	2014/01/31	Tight gas potential of the lower triassic montney formation, British Columbia



museums
UNIVERSITY OF ALBERTA

museums.ualberta.ca | 780.492.5834
[@ualbertamuseums](https://twitter.com/ualbertamuseums)
facebook.com/ualbertamuseums

