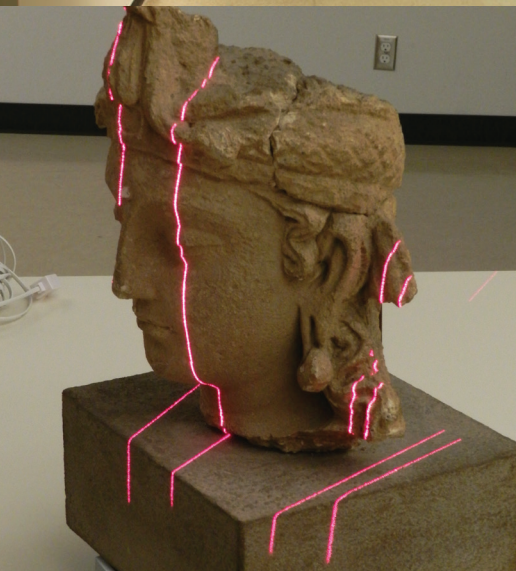




Annual Report

July 1, 2012 to June 30, 2013

University of Alberta Museums Annual Report, including the report of the University of Alberta Museums Policy and Planning Committee



Contents

1.0 Executive Summary	2
2.0 Report of the University of Alberta Museums Policy and Planning Committee	3
2.1 Activity One	3
2.2 Activity Two	5
2.3 Activity Three	5
2.4 Activity Four	7
2.5 Activity Five	7
2.6 Activity Six	8
2.7 Activity Seven	8
Appendices	12
Appendix A	12
Appendix B	13
Appendix C	15
Appendix D	16
Appendix E	17

University of Alberta Museums Annual Report

July 1, 2012 to June 30, 2013

1.0 Executive Summary

This report summarizes the activities of the Policy and Planning Committee, with selected academic museum collections-based highlights and achievements from July 1, 2012 to June 30, 2013.

- Work, planning, and recommendations continue based on the systematic Collections Needs Assessment conducted in 2011-2012. The identified needs and risks (and associated incidents), coupled with the annual review of the University of Alberta Museums funding needs process, emphasizes the fact that academic museum collections on campus continue to struggle with obtaining funds for basic collections-related needs to facilitate research.
- The committee approved Acquisition Strategies for four registered academic museum collections that identify collecting direction in support of faculty and department-level academic plans.
- The need for centralized museum expertise and assistance continues amongst the 29 registered academic museum collections. Requests for museum services from non-collecting units that fall outside the board-approved policy have increased.
- The Policy and Planning Committee continued discussions on the benefits and challenges concerning University of Alberta Museums participation at the Enterprise Square Galleries.

2.0 Report of the University of Alberta Museums Policy and Planning Committee

The University of Alberta Museums Policy and Planning Committee met formally on October 18, 2012, December 6, 2012, and March 6, 2013. Several issues identified in the last report are ongoing in this academic year.

2.1 Activity One

University of Alberta Museums and Collections Policy (ongoing activity)

The following key policy compliance tasks and activities occurred in 2012-13:

- To be compliant with our Board of Governors-approved policy, all academic museum collections must have an acquisition strategy which dictates what is collected and for what purpose. As of June 30, 2013, 15 of the 29 provisionally-registered academic museum collections have approved acquisition strategies based on departmental academic plans, slightly behind our original target for completion.
- Staff from Museums and Collections Services delivered a Collection Acquisition workshop to curators in this academic year as well as a Summer Student/Volunteer Orientation program.
- The Li Ka Shing art commission/call for proposals serves as a pilot/best practice method of how to commission new art for campus.
- Based on a Needs/Risk Assessment conducted with collections in 2011/2012, the following were identified as the greatest risks facing all academic museum collections, in order of significance:

Human Factor (accidental)

Solution: training and dedicated staff will help in this area.

Fire

Solution: fire suppression systems and fire detection can help in the interim, however, this points to the need for new facilities.

The following incidents occurred in the 2012/13 academic year:

- Fire in the General Services Building in June 2013. (Affected the Renewable Resources Collection.)
- Fire at the Devonian Botanic Garden in April 2013. (No damage, but risk to the Devonian Botanic Garden Herbarium Collection.)
- Fire in Heritage Medical Research Centre. (Affected public art.)
- Fire in Corbett Hall. (Affected public art.)

Dissociation

Solution: many collections have a backlog of digital records and inventories, which are essential for research, risk management, fiduciary purposes, and the maintenance of our Category A status, designated by the Department of Canadian Heritage. The staff of Museums and Collections Services continue to work with academic curators and collections staff to address this need.

Physical Forces (cumulative)

Solution: though the collections are used in teaching and research, many of them do not have proper storage cabinets and mounts to facilitate this access. While a new building will solve these issues (see Activity Two: Curatorial Research Facility), we are beginning to plan a short-term rehousing plan to address the urgent needs.

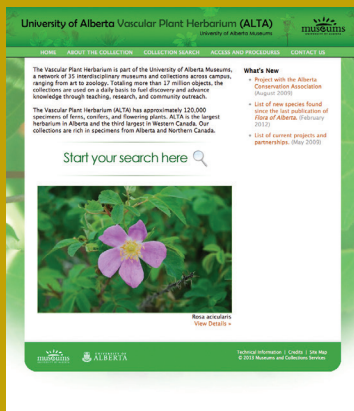
Water

Solution: water damage from leaks and floods due to infrastructure deficiencies and deferred maintenance requires substantial capital investment such as new facilities.

The following incidents occurred in the 2012/13 academic year:

- Flood in Humanities December 2012, reported January 2013. (Affected public art.)
- Continual flooding in the Vertebrate Paleontology Collection. (Nine incidents between November 2010 and July 2013.)

The above factors speak to the ongoing challenges for academic museum collections on campus. In 2012/2013, a three-year plan (Priority Timeline for Collections Rehousing Projects) was developed and piloted with the Bryan/Gruhn Archaeology Collection as a short-term solution to the larger institutional need for a purpose-built museum facility.



Following nearly three-and-a-half years of work, the University of Alberta's Vascular Plant Herbarium's (ALTA) help on an important project with the Northwest Territories Virtual Herbarium came to completion in the spring of 2013. After viewing ALTA's website and online collection data, with specimens dating back to 1916, the Department of Environment and Natural Resources, NWT, initiated and funded a project to make plant data more available to biologists and Northern communities.

This story serves as an example of how the University of Alberta Museums continue to strive to be at the forefront of museum collection digitization. Eighteen thousand new records were created online for all U of A Museums collections in 2012-13 – allowing enriched access for students and researchers worldwide – led by the Vascular Plant Herbarium, followed by the E.H. Strickland Entomological Museum, the Bohdan Medwidsky Ukrainian Folklore Archives, and the Laboratory for Vertebrate Paleontology.

2.2 Activity Two

Curatorial Research Facility (ongoing activity)

The Policy and Planning Committee continues to advocate for the need for dedicated, purpose-built facilities for the academic museum collections associated with the U of A Museums and for the need to reopen and update the planning conducted in 2005 for the Curatorial Research Facility.

- These discussions go hand-in-hand with the rehousing and inventory control issues highlighted above as a result of the challenges with maintaining more than 120 current locations.
- A new Curatorial Research Facility will also meet the needs outlined to maintain the University of Alberta Museums' Category A designation, as defined by the Department of Canadian Heritage.

2.3 Activity Three

Review of Category "A" Designation (ongoing activity)

The U of A Museums' Category "A" Designation, conferred by the Department of Canadian Heritage, has been under review since 2004-05 and remains conditional.

NB: As of August 2013, our designation is once again under active review. As of December 2013, staff of Museums and Collections Services is currently completing a survey requested by the Government of Canada.

Part A: Facilities

A 2011/12 Needs/Risk Assessment indicated that 87.5% academic museum collections are stored in inadequate or inappropriate spaces for the types of materials being held. Facilities issues addressed during this reporting period include:

- Preparation work was completed to move the Dentistry Collection to the Edmonton Clinic Health Academy in the 2013/14 Academic Year.
- Asbestos Abatement Program (Anthropology Collections)
 - The Bryan/Gruhn Archaeology Collection was temporarily relocated during asbestos abatement on the first floor of the HM Tory Building. While time and labour-intensive, this relocation provided an opportunity to improve the storage mounts for the entire collection.
 - We anticipate that further collections (Zooarchaeology and Ethnography) will be affected in the summer of 2014 as Facilities and Operations completes asbestos abatement in the basement of the HM Tory Building.
- Emergency lighting and leak/water detectors were installed in the Vertebrate Paleontology Collection.
- New data loggers were installed in the art collection facilities (Print Study Centre – FAB, TELUS, Terrace, and Enterprise Square Galleries) to allow for better tracking of conditions. The old data loggers were repurposed to establish baseline data on the conditions in the Vertebrate Paleontology and Ethnomusicology collections.

Part B: Emergency Preparedness Planning

Museums and Collections Services continues to work with the Office of Emergency Management to ensure our emergency planning and salvage procedures align with the broader university framework and that all campus first responders are aware of the unique needs of the academic museum collections across five faculties within our distributed system.

- A Museums and Collections Services representative continues to participate in campus emergency planning sessions.

- A freezer was installed in the Terrace building to deal with pest infestation of collection objects and other emergency situations for all academic museum collections.
- Collections-specific response plans were integrated into the existing templates developed by the Risk Management Office.
- The Museums and Collections Services Emergency Response team started training on material-specific response procedures and scenarios.
- The 24-hour Museum Emergency Response Line was created.

2.4 Activity Four

Return of Cultural Property Request (ongoing activity)

The Policy and Planning Committee continues to monitor an ongoing request for the return of human remains and associated funerary objects related to the Sharphead burial site that have been held in trust by the U of A in the Department of Anthropology since 1965. To date, there has been no specific outcome or decision.

NB: As of the summer of 2013, the issue of land for reburial has been resolved by the Government of Alberta. As a result, planning for reburial has begun. In the meantime, the Policy and Planning Committee has reconvened the Return of Cultural Property sub-committee, and the Department of Anthropology (where the remains are held) will be honouring requests for blessings.

2.5 Activity Five

Enterprise Square (ongoing)

- In late 2011, Museums and Collections Services was asked to manage the climate-controlled exhibition space in Enterprise Square concurrent with the university's negotiations with the City of Edmonton regarding a collaborative programming venture among several arts and heritage organizations.
- A draft agreement and terms of reference between the University of Alberta and the City of Edmonton concerning the management model for the initiative are in process.
- The U of A Museums do not have access to permanent climate-controlled exhibition space, which is required to meet Department of Canadian Heritage Category "A" status and criteria set by other granting agencies to make museum collections publicly accessible via exhibitions.

- The temporary exhibition space in Enterprise Square helps to meet some of these needs and address the ongoing expectation for community engagement, though the physical location presents resource and logistical issues related to travel and material costs.
 - We are currently experiencing an unparalleled opportunity to brand a dedicated exhibition space for the public to identify with the University of Alberta Museums. Preliminary feedback from both the on- and off-campus community has people inquiring why this space is referred to as the Enterprise Square Galleries and not simply the University of Alberta Museums Galleries. We are therefore investigating the possibility of a name change in the future.

2.6 Activity Six

Communications and Advocacy (ongoing)

- The Muse (K-12 curriculum-based education) program was suspended in 2012-13 due to lack of resources.
- We hired two student interns for the summer of 2013, funded by Museums and Collections Services and an annual donation by the Friends of the University of Alberta Museums.
- A new award was created as part of the annual University of Alberta Museums celebration to recognize the work of long-serving U of A Museums service/non-academic staff.

2.7 Activity Seven

Funding Needs Adjudication (annual activity)

The Policy and Planning Committee adjudicated the annual funding needs requests submitted by faculty curators of registered academic museum collections. Although \$116,529 was requested in 2012-13, only \$85,839* was distributed based on available monies.

Funding sources available to the U of A Museums in 2012-13 include the following:

- Community Outreach Endowment Fund: a U of A Museums fund which generated approximately \$9600 in 2012-13
- The Friends of the University of Alberta Museums, who raise and donate funds for projects, totaling \$32,903 in 2012-13.

* See Appendix E, Section One for detailed funding information.



Perceptions of Promise: Biotechnology, Society and Art

November 8, 2012 – February 2, 2013

This travelling exhibition offered a compelling glimpse into a unique collaboration between scientists, scholars, and nine Canadian and international artists. Viewers were challenged to consider the possibilities and implications of biotechnology in general and stem cell research in particular.



Passion Project

November 22, 2012 – March 2, 2013

Collecting art is an act of passion, from the individual to the institution. Passion Project told the story of how the University of Alberta has developed an outstanding art collection, shaped by the personal passion and collective vision of donors, artists, curators, and the community.



Immortal Beauty

November 22, 2012 – March 2, 2013

A collaboration between the U of A Museums and the Prince Takamado Japan Centre, Immortal Beauty celebrated the work of master calligrapher Shiko Kataoka. Her art and poetry reflect the importance that the U of A places on research and teaching to strengthen our knowledge about Japan.



Margins and Materiality

March 21 – December 20, 2013 (Classics Museum, HM Tory Building)

Coinciding with the Classical Association of the Canadian West 2013 Conference, this exhibition from the W.G. Hardy Collection of Ancient Near Eastern and Classical Antiquities examined international trade and cultural exchange in the ancient world. The highlight was a fourth-century Bodhisatva sculpture, replicated using a 3D scanner and printer.



SIZE MATTERS

April 4 – June 29, 2013

SIZE MATTERS featured the work of contemporary printmakers from Canada, the U.S., Finland, Japan, and beyond, working with new materials and advances in printing technology to create art of a scale and complexity that would have been unimaginable a few decades ago.



Re-birth of Venus: Fashion & The Venus Kallipygos

May 3, 2013 – March 2, 2014 (Human Ecology Building Gallery)

This exhibition from the Clothing and Textiles Collection explores the influence of art on fashion through the study of an unusually immodest statue and its pervasive influence on dress. The research investigates the artifact in terms of genre, production and cultural significance.

- Selected grant programs coordinated by Museums and Collections Services, including Young Canada Works in Heritage (\$18,849) and the Alberta Museums Association (\$11,217).
 - \$5300 was funded through other sources (e.g., integrated into existing projects).

In addition to funding coordinated via Museums and Collections Services, designated academic curators and collections staff are actively involved in research*, much of which relates to academic museum collections.

* See Appendix E, Section Two for detailed funding information. This chart is generated by the Research Services Office and is based on the fiscal rather than academic year.

Embracing the Unexpected: Student Internship in Innovation

By Sean McWade, 2012 recipient of the Friends of the University of Alberta Museums Student Internship in Museum Innovation



Sean McWade completed his Bachelor of Education degree in the 2012/2013 academic year, complementing his previously-completed Bachelor of Science degree (major in Paleontology). His internship experience helped him fulfill his goal of integrating museum objects and related research into K-12 science education.

I have always been curious about what makes a museum “go.” During the summer, I was able to explore University of Alberta collections that I didn’t even know existed and that hold absolutely amazing historical and cultural artifacts. This internship has been made memorable by all of the experiences I didn’t expect, and I will always be thankful to the staff of the University of Alberta Museums for their help in ensuring that I gained as many new skills as possible this summer.

This internship really opened my eyes to how diverse yet integrated the different university collections are, and how the various students, curators and university staff must work together to ensure that the collections remain an effective educational resource for everyone. Their varying roles in research and public education and outreach has shown me how closely museums must pay attention to the needs of different groups, whether those needs relate to historical artifacts, scientific specimens, artworks or new innovations.

The varied experiences I’ve had this summer have shown me just how much work must be put into the conception, development, and execution of an exhibit or public program. The time commitment to such projects is impressive. This internship gave me the chance to really discover what I was passionate about within the realm of museums and how I envision myself contributing to museums in the future. The amazing drive the U of A has to showcase the history, research, and stories it holds within its museum collections shows just how proud this institution is of its past, its researchers, and its students.

Raising the Bar for Museum Standards

This spring at the **University of Alberta Museums Celebration**, we introduced the **Outstanding Service Award** to officially recognize museum and collections staff who demonstrate leadership and excellence in their roles. The two inaugural recipients were selected for their hard work and dedication, thoughtful participation in campus-wide museum initiatives, student and volunteer engagement, and for the passion they share for the work that they do.



Dorothy Fabijan, Assistant Curator of the Vascular Plant Herbarium in the **Department of Biological Sciences**, joined the university's botany staff in 1985 and has been in her current role since 1999. Dorothy is a strong advocate for the active use of museum specimens in teaching and research. She manages all aspects of the herbarium from international loans to processing new acquisitions through field research – including her own – to preparing labs for students to driving an active volunteer program to databasing the collection for online access. An accomplished botanist, Dorothy has an incredible breadth of knowledge and expertise in plant taxonomy and plant identification, providing these and other herbarium services to the university community and also to various levels of government, industry, non-profit organizations, and the public. Dorothy is an exemplary ambassador for the herbarium and the work of museum collections, consistently maintaining the highest standards of practice. Dorothy received the Nat Rutter Outstanding Technician of the Year Award in 2011 from the U of A chapter of the Sigma Xi Research Society.



Danny Shpeley, Assistant Curator of the E.H. Strickland Entomological Museum, started his career in the **Department of Biological Sciences** in 1974. An accomplished entomologist, Danny's work involves researching and classifying specimens from around the world and preparing them for preservation. He has expertise and wide-ranging knowledge in all things entomological, and he is the "go-to-guy" for insect identification, whether it is an academic research inquiry or from the general public on a backyard bug. Danny's contributions to the collection are vast, but perhaps most notable is his contribution to the virtual museum, creating better access to data through the development of species pages, available through international biodiversity initiatives. His wealth of knowledge is well-respected in the academic community. Danny received the Nat Rutter Outstanding Technician of the Year Award in 2006 from the U of A chapter of the Sigma Xi Research Society.

Appendix A

Policy and Planning Committee Membership 2012-13

Chair

Heather Proctor

Curator, Freshwater Invertebrate Collection and Chair, Curators Committee

Department of Biological Sciences

Alison Murray

Curator, Ichthyology Collection, University of Alberta Museum of Zoology

Department of Biological Sciences

Andriy Nahachewsky

Curator, Bohdan Medwidsky Ukrainian Folklore Archives

Department of Modern Languages and Cultural Studies

Ex Officio (voting)

Janine Andrews

Executive Director, Museums and Collections Services

Tom Kieren

President, Friends of the University of Alberta Museums

Undergraduate Student Representative

Jessica Edwards

Department of Biological Sciences

General Faculties Council (elected)

William Anselmi

Department of Modern Languages and Cultural Studies

Anne Malena

Department of Modern Languages and Cultural Studies

Graduate Students' Association Representative (elected)

Maryna Chernyavska

Department of Modern Languages and Cultural Studies

Curators Committee (elected)

Jocelyn Hall

Curator, Vascular Plant Herbarium

Department of Biological Sciences

Pamela Mayne Correia

Curator, Bryan/Gruhn Ethnographic Collection, Fossil Hominid Cast Collection, Osteology Collection

Department of Anthropology

Committee Secretariat (non-voting)

Frannie Blondheim

*Associate Director, Museums and Collections Services
(Recording Secretary)*

Appendix B

Directory of Registered Collections of the University of Alberta Museums

Faculty of Arts

Department of Anthropology

Bryan/Gruhn Archaeology Collection

Curator: Pamela Willoughby

Bryan/Gruhn Ethnographic Collection

Curator: Pamela Mayne Correia

Fossil Hominid Cast Collection

Curator: Pamela Mayne Correia

Osteology Collection

Curator: Pamela Mayne Correia

Zooarchaeology Reference Collection

Curator: Robert Losey

Department of History and Classics

W.G. Hardy Collection of Ancient Near Eastern and Classical Antiquities

Curator: Jeremy Rossiter

Department of Modern Languages and Cultural Studies

Bohdan Medwidsky Ukrainian Folklore Archives

Curator: Andriy Nahachewsky

Department of Music

Canadian Centre for Ethnomusicology

Curator: Regula Qureshi

Faculty of Agricultural, Life & Environmental Sciences

Devonian Botanic Garden

Devonian Botanic Garden Herbarium

Curator: René Belland

Department of Human Ecology

Clothing and Textiles Collection

Curator: Anne Bissonnette

Department of Renewable Resources

Renewable Resources Natural History Collection

Curator: John Acorn

Soil Science Monolith Collection

Curator: Scott Chang

Faculty of Medicine & Dentistry

Department of Laboratory Medicine and Pathology

Pathology Gross Teaching Collection

Curator: David Rayner

School of Dentistry

Dentistry Museum Collection

Curator: Loren Kline

Faculty of Science

Department of Biological Sciences

Cryptogamic Herbarium

Curator: Catherine La Farge-England

Vascular Plant Herbarium

Curator: Jocelyn Hall

Paleobotanical Collection

Curator (Acting): Michael Caldwell

E.H. Strickland Entomological Museum

Curator: Felix Sperling

Freshwater Invertebrate Collection

Curator: Heather Proctor

Jim van Es Marine Invertebrate and Malacology
Collection

Curator: Richard Palmer

Museum of Zoology

*Curator: Cindy Paszkowski (Amphibian and Reptile
Collection / Ornithology Collection)*

Curator: Alison Murray (Ichthyology Collection)

Curator: Andrew Derocher (Mammalogy Collection)

Parasite Collection

Curator: Allen Shostak

Laboratory for Vertebrate Paleontology

Curator: Philip Currie (Dinosaur Collection)

Curator: Alison Murray (Fossil Fishes Collection)

Curator: Michael Caldwell (Higher Vertebrates)

Department of Earth and Atmospheric Sciences

Drill Core Collection

Curator: John-Paul Zonneveld

Invertebrate Paleontology Collection

Curator: Lindsey Leighton

Meteorite Collection

Curator: Christopher Herd

Mineralogy and Petrology Collection

Curator: Tom Chacko

Trace Fossil Collection

Curator: Murray Gingras

Museums and Collection Services

University of Alberta Art Collection

Curator: Jim Corrigan

Mactaggart Art Collection

Curator: Vacant

Appendix C

Museums and Collections Services Staff

Janine Andrews
Executive Director

Frannie Blondheim
Associate Director

Jim Corrigan
Curator, University of Alberta Art Collection

Ellen Cunningham
Exhibition and Outreach Manager

Jaclyn Flaata
Intern (Summer 2013)

Tom Hunter
Collections Assistant

Shannon Kraichy
Intern (Summer 2013)

Jennifer Kuchta
*Communications and Marketing Coordinator
(on leave until April 2013)*

Denis La France
Senior Systems Administrator

Carmen Li
Preventive Conservation Manager

Christina Marocco
Administrative Team Lead

Erin McDonald
Collections Management Advisor

Sean McWade
Intern (Summer 2012)

Isabela C. Varela
*Communications and Marketing Coordinator
(leave replacement until March 2013)*

Jim Whittome
Information Management Advisor

Appendix D

Friends of the University of Alberta Museums Board of Directors: 2012-2013

Tom Kieren
President

Monica Barclay
Director-at-Large

Dennis Brooks
Director-at-Large

Stephanie Huolt
Treasurer

Holly Sykora
Casino/Secretary

Tai Ziola
Director-at-Large

Appendix E

Detailed Funding Report

Section One

Museums and Collections Services coordinates applications for external funding to museum and heritage organizations and agencies on behalf of the University of Alberta Museums. The following funding was acquired for museum and collection projects between July 1, 2012 and June 30, 2013:

The Friends of the University of Alberta Museums (\$47,903)

Museums and Collections Services (\$15,000)
For the annual "Friends of the U of A Museums 25th Anniversary Student Internship in Museum Innovation"

Department of Biological Sciences – Cryptogamic Herbarium (\$4000)
Digitization of Sphagnopsida - Hire intern to database 14,000 specimens

Department of Biological Sciences – Laboratory for Vertebrate Paleontology (\$1800)
Hire undergraduate student for various activities

Department of Biological Sciences – Laboratory for Vertebrate Paleontology (\$2200)
Revitalize existing display cabinets to accommodate new specimens

Department of Biological Sciences – Vascular Plant Herbarium (\$4000)
Database Georeferencing and Imaging – hire two students to prepare database for Canadensys

Department of Biological Sciences – Museum of Zoology, Mammalogy Collection (\$4000)
Rehabilitation of large mammal osteological collections – hire student for cleaning/prep/storage

Department of Biological Sciences – Museum of Zoology (\$903)
Labour and material for rehousing teaching lab specimens

Devonian Botanic Garden – DBG Herbarium (\$4000)
Herbarium Digitization – hire student to digitize bryophytes from Alberta Rocky Mountains

School of Dentistry – Dentistry Museum (\$4000)
Collection Assessment project – hire contract staff for move preparation

Department of Human Ecology – Clothing and Textiles Collection (\$4000)
Quilt Mount preparation – materials and labour to complete display mounts for Rosenberg Quilts

Department of History and Classics – W.G. Hardy Collection of Ancient and Near Eastern Antiquities (\$4000)
Refurbishment of museum exhibits to coincide with national classics conference – funds for labour, design, materials

Community Outreach Endowment Fund (\$9516)

Department of Anthropology – Archaeology
Collection (\$1633)

*Historic Catalogue Assessment – hire temporary staff to continue
data cleaning project*

Department of Anthropology – Archaeology
Collection (\$1633)

*Collection Digitization Phase 7 – hire temporary staff to continue
data imagine project*

Department of Anthropology – Archaeology
Collection (\$1400)

*Database Management Phase 2 – salary for manager to
continue database development*

Department of Anthropology – Human Osteology
Collection (\$500)

*Purchase of skeletal tuberculosis specimens for teaching/
analysis of disease*

Department of Anthropology – Human Osteology
Collection (\$450)

*Forensic Skeletal software – data samples of skeletal collections
for use in research*

Department of Biological Sciences – E.H. Strickland
Entomological Museum (\$2750)

*Carabid specimen databasing – hire student to database
remaining 3000 specimens in this family*

Department of Biological Sciences – Museum of
Zoology (\$1150)

Labour and material for rehousing teaching lab specimens

Alberta Museums Association (\$11,217)

Department of Human Ecology – Clothing and
Textiles Collection (\$11,217)

*Labour and material to complete display mounts for the
Rosenberg Quilt Collection*

Young Canada Works in Heritage Institutions (\$18,849*)

Department of Biological Sciences – Cryptogamic
Herbarium (\$4700)

Hire intern to database 14,000 sphagnopside specimens

Department of Biological Sciences – Vascular Plant
Herbarium (\$11,205)

*Database Georeferencing and Imaging – hire two students to
prepare database for Canadensys*

Devonian Botanic Garden – DBG Herbarium

(\$2944) Herbarium Digitization – hire student to digitize
bryophytes from Alberta Rocky Mountains

Section Two

The following table provides details of research grants received by academic curators responsible for individual museums and collections at the University of Alberta. This chart is generated centrally by the Research Services Office and reflects grants with funds awarded within the fiscal (April 1, 2012 to March 31, 2013) rather than academic year (July 1, 2012 to June 30, 2013).

* Total amount of application to the Government of Canada. Actual amount received may differ.

Project Manager	Research Contributions	Financial Sponsor	Start Date	End Date	Project Description
Derocher, Andrew	15,000.00	NSERC	4/1/2004	3/31/2014	Polar bears and climate change: habitat use and trophic interactions
Derocher, Andrew	19,500.00	NCE ArcticNet	4/1/2011	3/31/2014	Impacts of Global Warming on Arctic Marine Mammals
Derocher, Andrew	110,000.00	Environment Canada	8/5/2011	3/31/2015	Sea ice habitat selection, movement dynamics, and conservation of polar bears in a changing Arctic.
Derocher, Andrew	90,000.00	World Wildlife Fund Canada	7/10/2012	12/31/2013	Polar bear ecology, population genomics and quantitative genetics
Derocher, Andrew	1,500.00	AB Innovates-Tech Futures	5/1/2010	5/31/2013	PHD Scholarship Research Allowance
Derocher, Andrew	1,500.00	AB Innovates-Tech Futures	5/1/2010	4/30/2013	PHD Scholarship Research Allowance
Gingras, Murray	2,237.08	CDN Business - Various	10/1/2004	3/31/2022	General research funds Gingras
Gingras, Murray	{3,200.00}	Multi Sponsor	10/1/2004	3/31/2022	General research funds Gingras
Gingras, Murray	3,200.00	Multi Sponsor	10/1/2004	3/31/2022	General research funds Gingras
Gingras, Murray	3,200.00	Sales of Goods & Services	10/1/2004	3/31/2022	General research funds Gingras
Gingras, Murray	2,000.00	Sales of Goods & Services	10/1/2004	3/31/2022	General research funds Gingras
Gingras, Murray	35,000.00	NSERC	4/1/2010	3/31/2016	Expanding the potential of trace fossil analysis for practical applications
Gingras, Murray	{2,237.08}	Conoco Phillips Canada	6/1/2010	7/27/2012	Big Rivers Project
Gingras, Murray	32,400.00	Nexen Inc	9/1/2011	8/31/2013	Documenting Bitumen-Water Contact Morphologies and Bitumen Lean-Zones in MidMurray Formation Outcrops
Hall, Jocelyn	30,660.00	NSERC	4/1/2007	3/31/2014	Phylogenetics on morphological diversification in capparidaceae, cleomaceae, and brassicaceae
Herd, Christopher	525.00	Sales of Goods & Services	11/1/2005	3/31/2022	General research funds Herd
Herd, Christopher	26,000.00	NSERC	7/1/2003	3/31/2014	The geology of Mars from studies of martian meteorites
Kline, Loren	8,500.00	Sales of Goods & Services	2/1/1999	3/31/2022	General research funds Kline
Leighton, Lindsey	22,000.00	NSERC	4/1/2009	3/31/2014	Assessing predation through time and space
Losey, Robert	5,095.00	University of British Columbia	6/1/2012	5/31/2014	Seedhunter interactions on Lake Baikal, Siberia
Murray, Alison	19,000.00	NSERC	4/1/2006	3/31/2014	Systematics and biogeography of fossil and living teleost fishes
Paszowski, Cynthia	34,000.00	NSERC	4/1/2010	3/31/2016	The roles of habitat and interspecific interactions in the ecology of amphibians
Paszowski, Cynthia	5,270.86	AB Conservation Association	4/1/2012	3/31/2013	Using wetland-dependent wildlife to monitor landscape change
Paszowski, Cynthia	11,780.00	CDN Business - Various	2/1/2012	1/31/2017	Arctic Groyling Workshop and Symposium
Paszowski, Cynthia	2,000.00	FriendsElksSociety	4/1/2012	6/30/2013	Using wetland dependent wildlife to monitor climate and landscape change
Paszowski, Cynthia	4,360.00	AB Sport Recreat Parks Wl Fndn	5/1/2012	5/31/2013	Movement patterns and habitat use of urban amphibians in Edmonton, AB
Paszowski, Cynthia	1,675.00	AB Sport Recreat Parks Wl Fndn	4/1/2012	3/31/2013	The effect of noise pollution and upland vegetation on amphibian and bird activity
Proctor, Heather	23,640.00	NSERC	4/1/2003	3/31/2014	Sexual selection in mites: copulation, conflict and complexity
Speirling, Felix	61,070.00	NSERC	4/1/1999	3/31/2014	Speciation, phylogeny and diversity of insects
Speirling, Felix	0.01	AB Sustainable Resource Dev	5/1/5/2009	4/23/2012	Western Spruce Budworm Phenology/Monitoring 2009
Speirling, Felix	90,855.00	AB Innovates-Bio Solutions	5/1/2012	4/30/2015	Multi-species ecogenomics of spruce budworm outbreaks in Alberta forests
Willoughby, Pamela	{661.60}	University of Laval	1/1/2009	8/31/2012	Scoping exercise on research priorities in fruit medicinal knowledge and practice under the Nasivik thematic perspectives assessment initiative
Willoughby, Pamela	16,424.30	University of Aberdeen	7/1/2012	6/30/2015	Arctic Dornus
Willoughby, Pamela	47,000.00	SSHRC	4/1/2011	3/31/2015	The Evolution of Modern Humans in southern Tanzania: Further investigations by the Iringa Region Archaeological Project
Zonneveld, John-Paul	53,000.00	NSERC	4/1/2009	3/31/2014	Stratigraphic architecture & depositional evolution of the upper triassic Charlie Lake formation.

