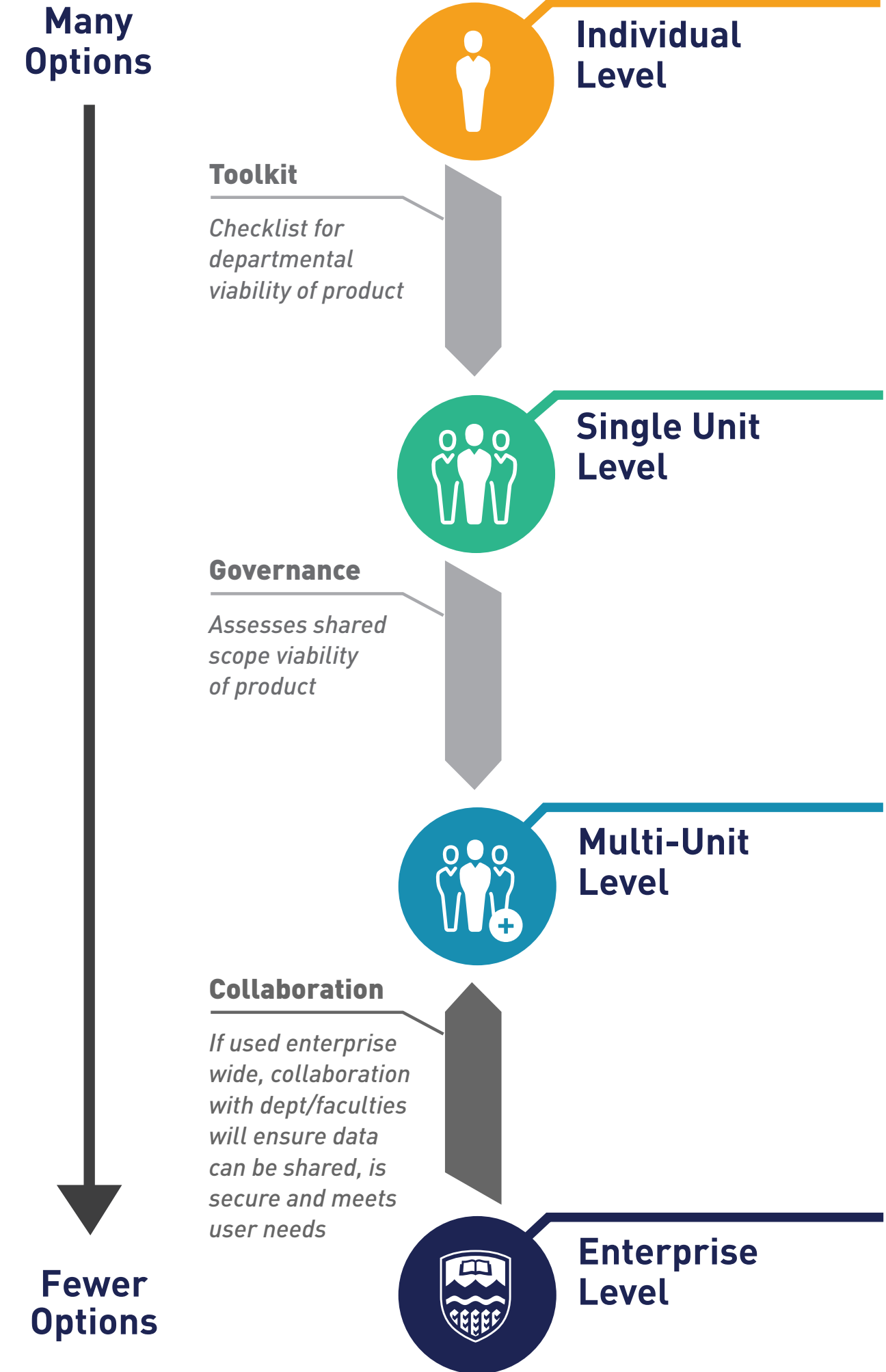


Technology Governance Framework



Technology Governance Framework



IST's Support Role

Guidance

- Direction provided regarding Privacy and Security requirements
- Direction provided regarding U of A Policy & Standards
- Communicate Support obligations

Guidance and Consultation

- IST support resources may be provided (Possible cost)
- Integration resources may be provided (Read-only from ERP; Possible cost, standard integrations only)

Consultation and Support

- IST support resources will be provided
- Integration resources provided (custom)
- Advertised as Centrally available service

Managed as System of Record

- IST may assume ownership
- Centrally funded and resourced
- Mandated as Centrally available service

Integration Support

- Publicly available data & integration services only

- Standard App Integrations
- Read-Only from Enterprise Apps
- Possible cost to implement/support

- Custom App Integrations
- Read/Write with Enterprise Apps
- Possible shared funding to implement/support
- Privacy and Security Review
- U of A Policy & Standards

- Full Integration Support
- Centrally funded and resourced

Ownership/Stewardship of Data

- Individual or Unit/Department

- Unit/Department

- Unit/Departmental data owned/stewarded by Individual Units
- Metadata required for Integration and Support owned/stewarded by IST

- Institution owned
- May be stewarded by Individual or Unit/Department