

Top 10 Tips for New Researchers

Jude Spiers, PhD, RN
Associate Professor, Faculty of Nursing
Distinguished Scholar, IIQM
University of Alberta
February 14, 2019

jaspiers@ualberta.ca

Session Goals

After this session, participants will be able to:

- Identify why qualitative research is not a linear process – on paper or in reality.
- Understand the concept of cycles of deliberation- iterative, cyclical, deliberative discourse in qualitative research.
- Identify practical tips to implement prior to, or during research processes.

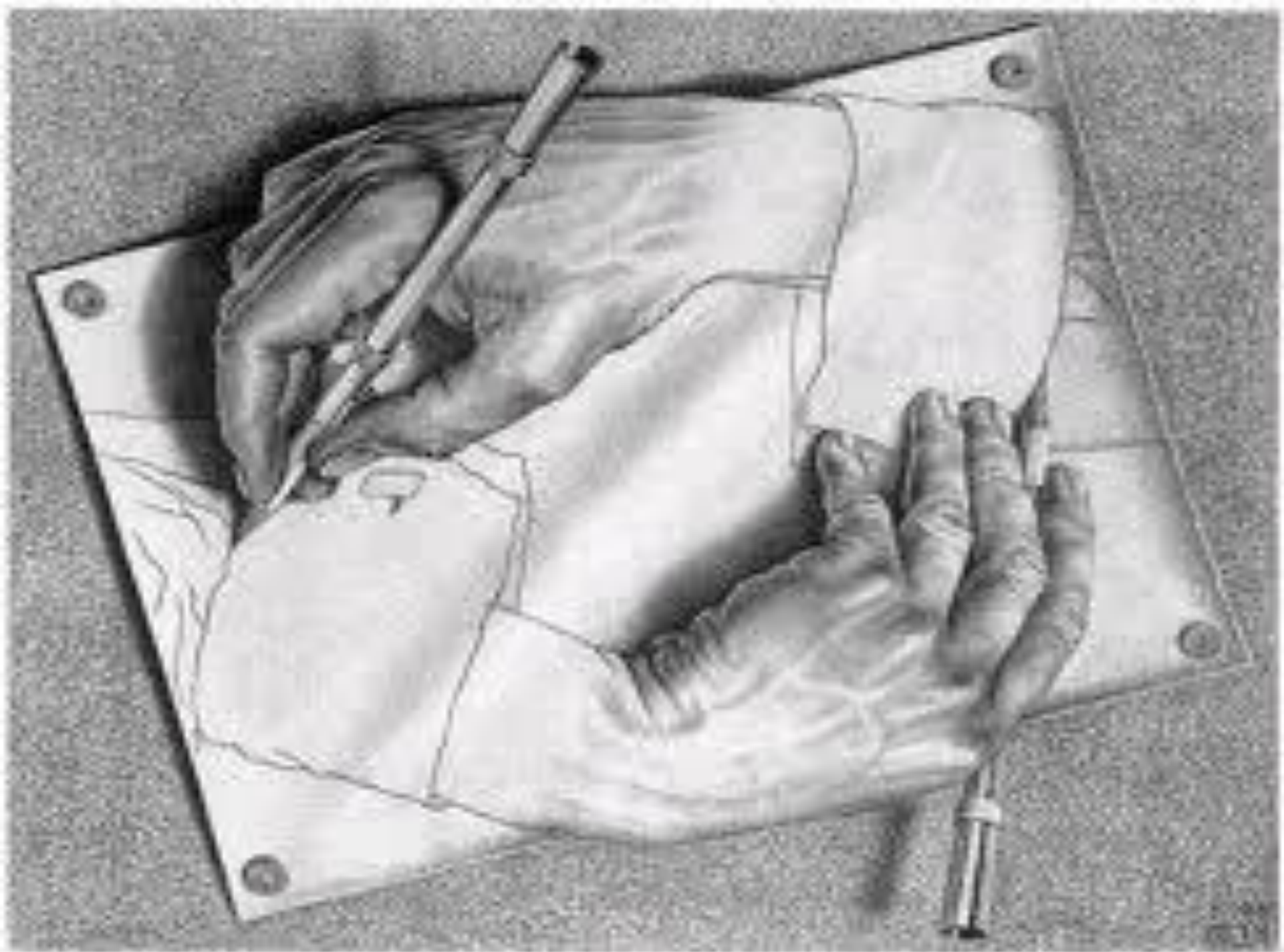
Pickles Test

What associations
– links – or stories
can you make with
these cards?

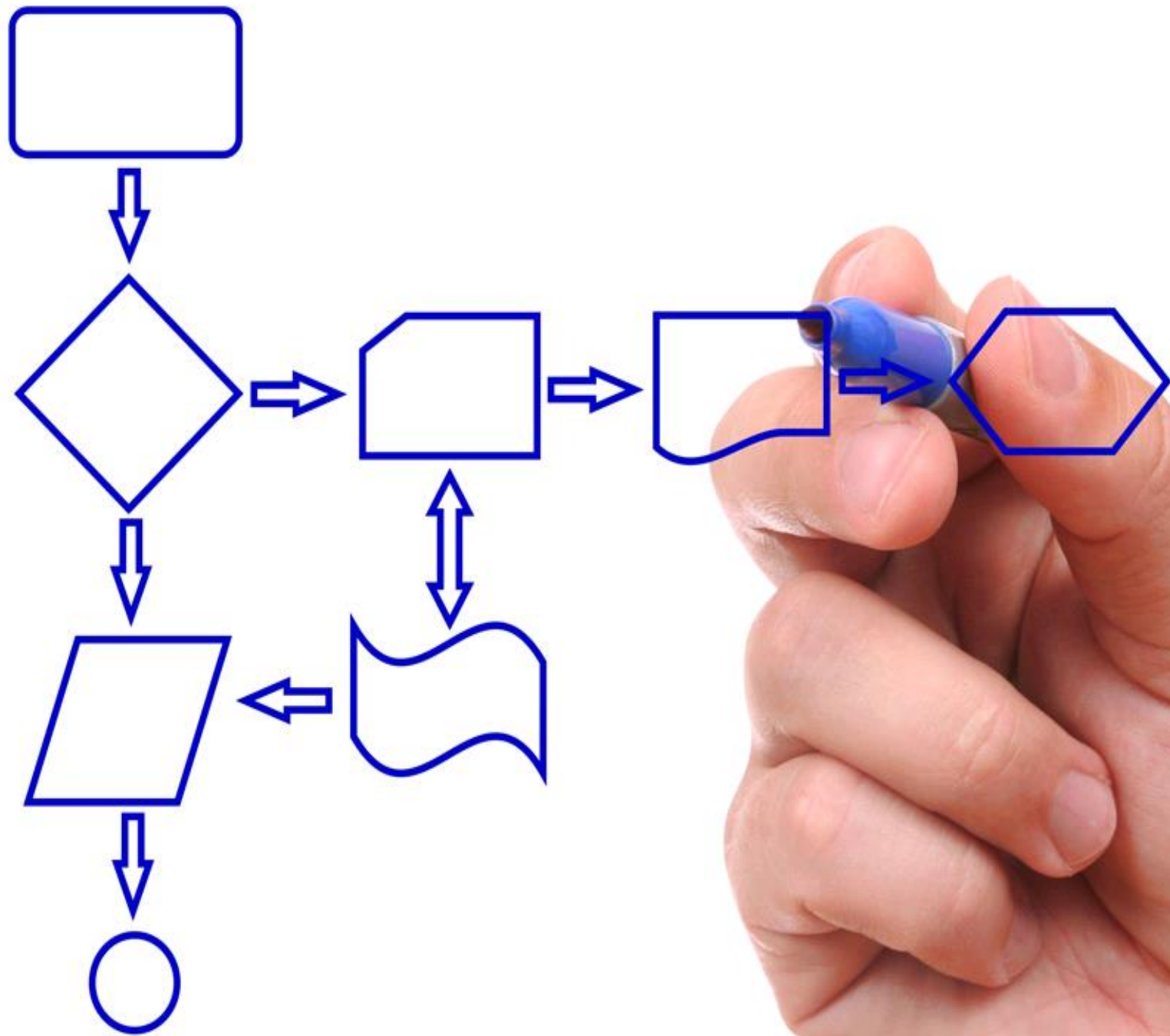


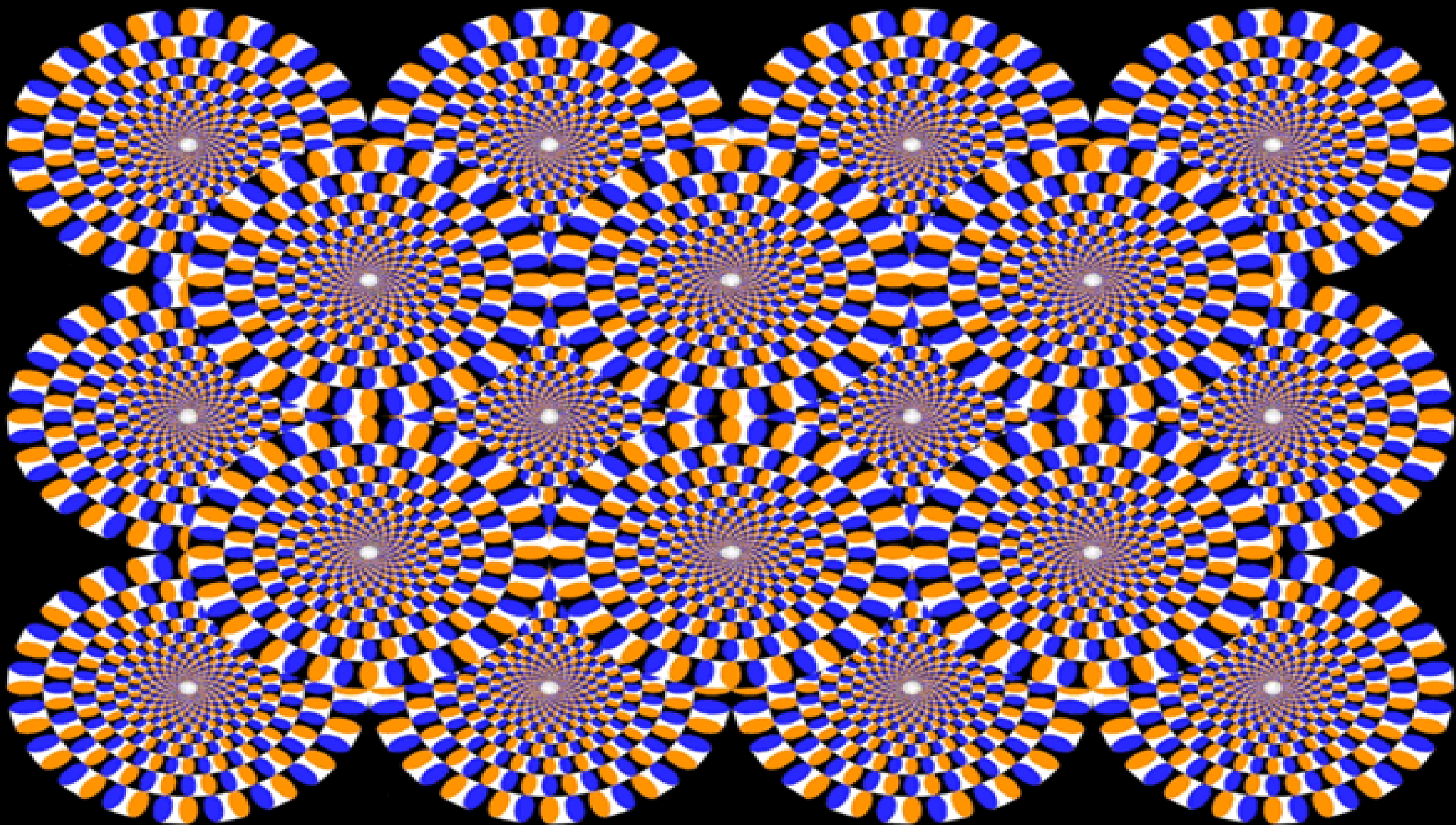










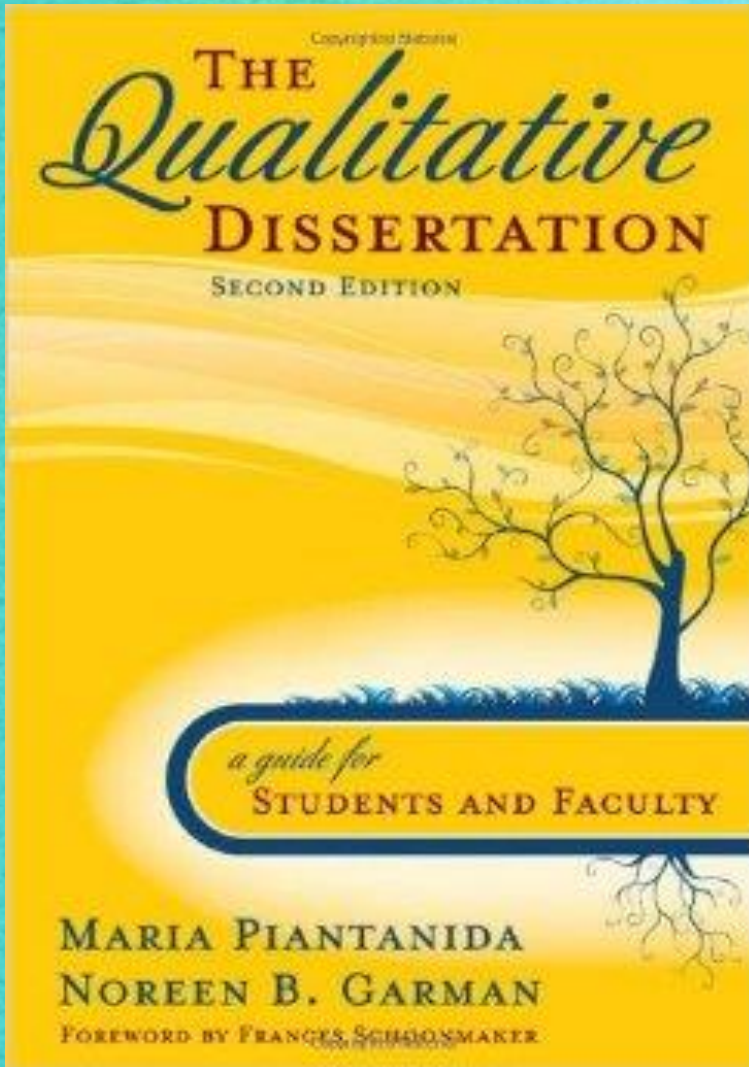




What mistakes did Bear make in learning to use a treadmill for the first time?



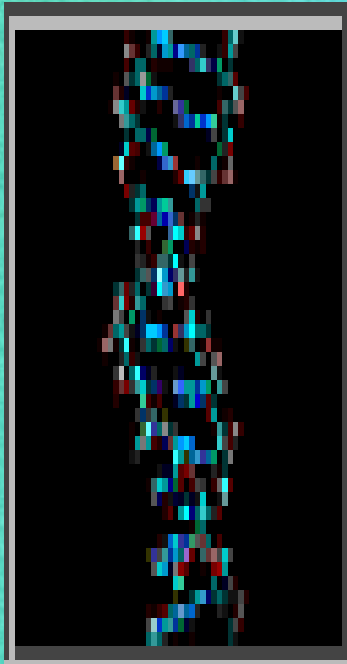
Cycles of Discursive Deliberation



- Visit & revisit the same substance, discourses, ideas again & again in **different** ways with more profound levels of deliberations & understanding.
- Continual interplay between personal knowledge grounded in experience, formal bodies of knowledge, data/information you are generating in your project.
- Iterative cycles involve interplay between private ruminations **and** thinking aloud with others.
- Cycling between preparation of written documents **and** informational and formal reviews of those documents.
- Each layer is an evolution in your clearer conceptual connections among key facets of your inquiry.

Cycles of Deliberation

(Piantanida & Garman (2009))



- Facing the research
- Moving into the research
- Crafting the research proposal
- Proposing the study
- Living with the study
- Entering into public discourses
- Adjusting to life afterwards





Common Errors

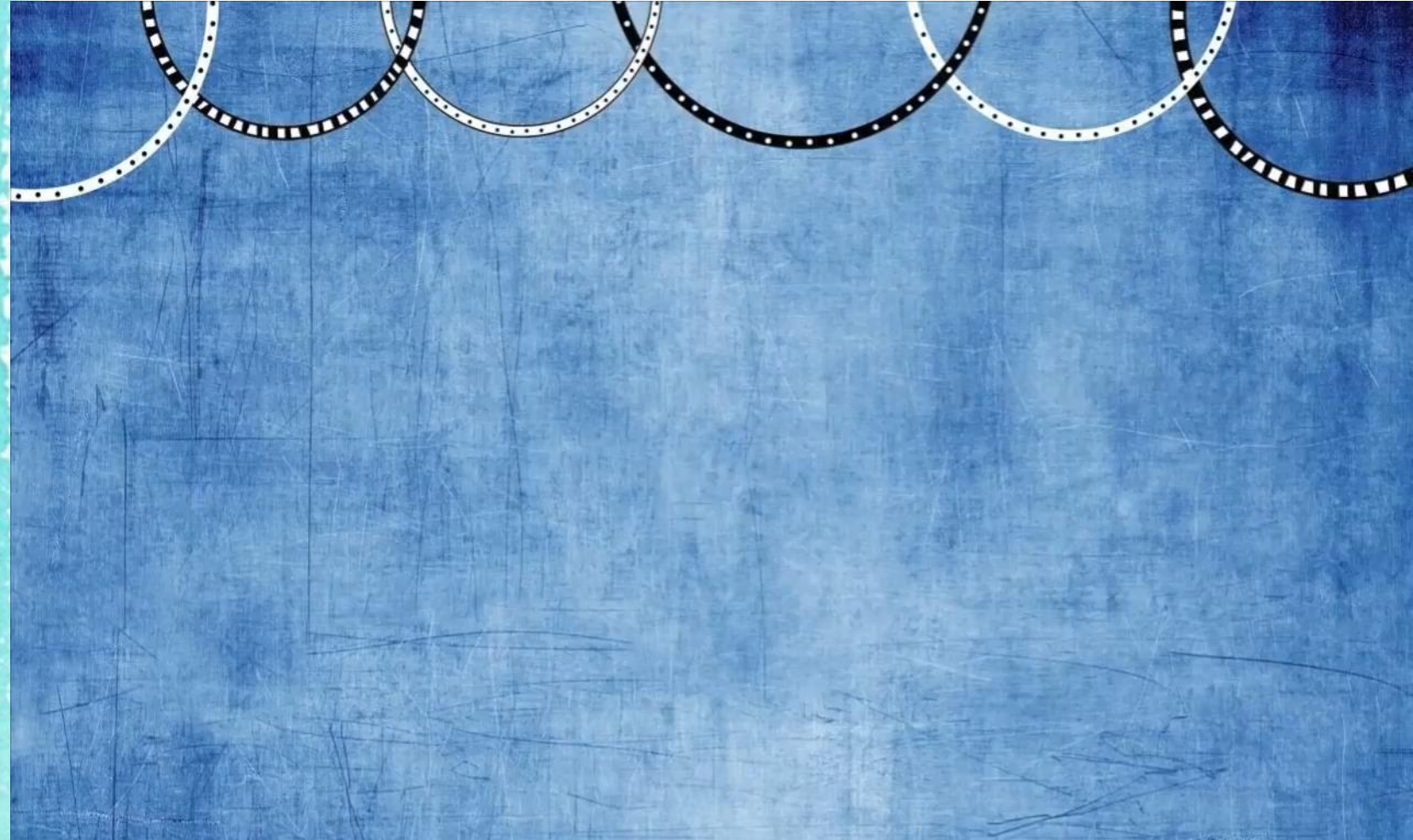
- Not realising the messiness & evolving nature of qualitative research
- Balancing depth with scope of data: Amassing data
- Dealing with being overwhelmed - how to be thorough without being overwhelmed?
- Moments of brain sizzle & sense of doing everything wrong
- Relating analysis, theoretical frame & research questions
- Software- doing the thinking for you
- Descriptive versus theoretical coding that will help you answer your research purpose
- Not talking or sharing ideas
- Not writing until you “get it right”
- Question own assumptions? You do not know what you do not know
- Tracking great ideas – but not losing main focus of your work
- Lack of memos & tracking of ideas
- Failing to note why & where something is interesting- or uninteresting
- Questioning own assumptions

Tip #1

Qualitative Research is a craft

Practice with a Mentor:

- RA work
- Volunteer work
- Work with peers



<https://www.youtube.com/watch?v=JYAgFY8Gfq4>

Tip #2

Calling out for help

- Balance between finding your own way & calling out for help.



https://www.youtube.com/watch?v=VrSUe_m19FY

Tip #3

Learning
Software-

BEFORE
YOU NEED
IT

Analyzing qualitative data

How do I summarize and make sense of all these words?



Tip #4

Software-

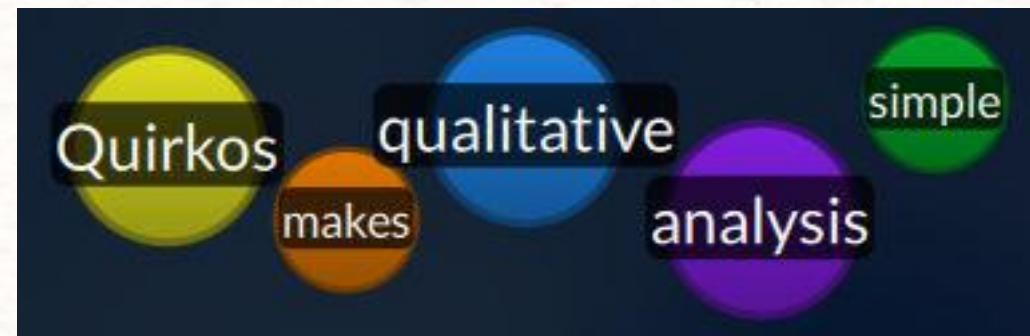
Learn it
BEFORE you
need it.

Comparing Software Packages

BASIC FEATURES	ATLAS.TI	NVIVO	HYPERRESEARCH	MAXQDA2
Platform	Windows	Windows	Mac/ Windows	Windows
Import text files	X	X	X	X
Import image files	X	X	X	X
Import audio and video files	X		X	X
Concept mapping	X	X	X	X
Allows for team work	X	X	X	X
Export report to Excel or SPSS	X	Text file	Text file	X
Memoing	X	X	X	X
Drag and drop coding	X	X	X	X
Text searching	X	X	X	X

Creswell Qualitative Inquiry 2e

8.31



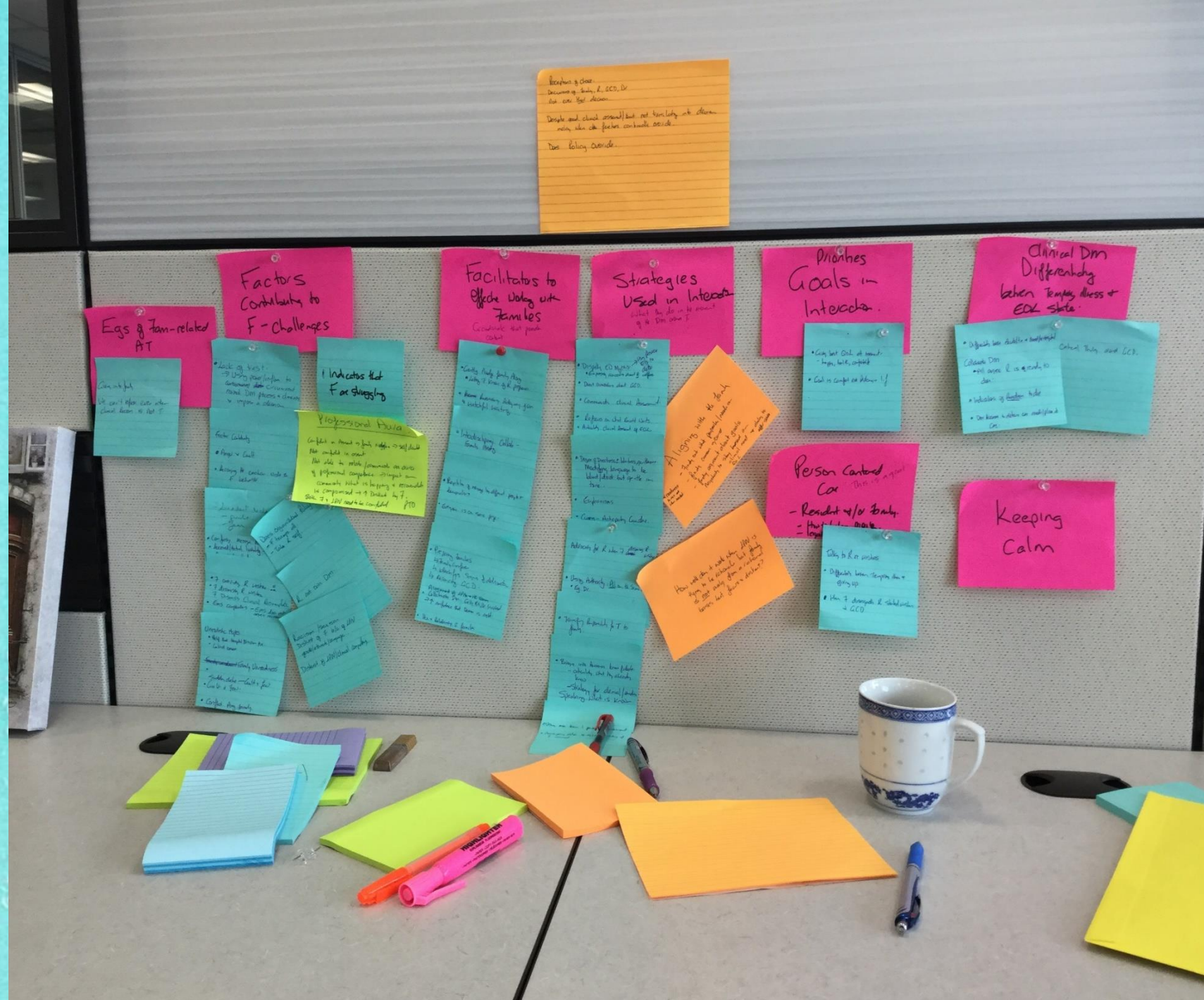
Tip #5

Differentiate
the type of
coding you
are doing

- Descriptive
- Topical
- Analytic
- Largely useless.e.g. Emotions

Tip #6

Think first,
computer
code second



Tip #7

Talk about your ideas and analysis

What are the oral health concerns? practices of those living with dementia? their loved ones?

Evolution of CG. Ros Parsibility
Parades - explain - argue - DO IT

Care Partners

Varying levels of independence
① Wholly independent
② Partially independent - CUE
③ Wholly Compensatory
④ Unknown

Wholly Inde. OR. Partial
CG's awareness of structure, but no idea about actual process

Wholly comp.
CG does all the OH

PRACTICES:

CONCERNS:

Distaste RE:
The need to do intimate oral care
→ distaste
→ refusal
→ disgust

Solutions given are easier for CG, not the ILD
→ not brush
→ false teeth

Emodied Habit (ROUTINE)
"obscure of habit"

Role of Dental Professionals
→ Routine fit up
→ 3 times / year
→ benefits / values
→ pointing out change
→ 2017/18

Maintaining autonomy/Personhood
→ While they are losing themselves
→ Losing intimate / confident behaviors

HINDSIGHT

PRESENT Realization through FG process

FORESIGHT into assisting ILD in ADL

"pick your battles"
→ "Cross that bridge"
→ "Munk by munk"
→ "shaken by shaking"

Facilitating Strategies + OH
→ morning dentures
→ face towel + TP
→ Caring
→ do it together
→ dental check ups annually

Strategies + accommodations
→ time
→ min-by-min
→ D.P. out reach
→ all products labeled
→ variety
→ boxes to reminders

What are the oral health concerns & practices of those living with dementia & their loved ones?

Care Partners

Why? Preserving Personhood

What they have left
* loved one
* DH just are part of overall life
↑ relying on & fosters Empathy/Respect & loss!

Maintaining autonomy/Personhood

Embodied Habit (ROUTINE)

Evolution of CG. Responsibility
Made by minute undulating D

Preserving Own Personhood as C.G.

Concerns
↓
to CG

About IKT

ICK
Energy. min/min.
Now not late
SUI leaders
lack of preparation?
Seed of Hope

HINDSIGHT

Ventures

Can't be sure
Too tall.
Disgust
eg

istaste RE:
need to do
imake Oral care

Context of Wally - Supervision
Repetition/Reminds
• Teach create solutions
* Picky bottles
• Too hard
ICK facts

Concerns
Verbalize.

Solutions given are easier for CG not the ILD

Prache.

Vigilance

See/hear to verify
Rely on Habit * - ILD Cues
Not complained.
See Dentist → Confirmation Exist Confidence;

! Realize what they thought was
Transition - Go with what actually happening
ILD to DHP
Going to brush
Visual affirmation
Setting it up - plus statistically
Subvert - "I" on brush

Transition Practice - Learning
Cued by DHP
Given tools to assist
Support staff
Doing it - No choice
ICK facts

Facilitating Strategies to OH

Role of Dental Professionals

Regret:

Levels of Independence →

Wholly Indepe.
↳ Direct Obs
↳ Inferred.

Partially Indepe.
↳ Cuing for actions
↳ Assist - buying.

Wholly Compensatory
Dependent
↳ Complete Assistance for
Organization to actions

Transition Point marker

Transition Point marker

PRESENT Reallocation through FG process

FORESIGHT into assisting ILD in ADL

Strategies + accommodations

Varying levels of independence

Real...
Wholly Indepe. as "fact"

PRACTICES

Tip #8

Start writing
much earlier
than you
think



Tip #9

Treat all
work as a
draft



Trepidation
about feedback



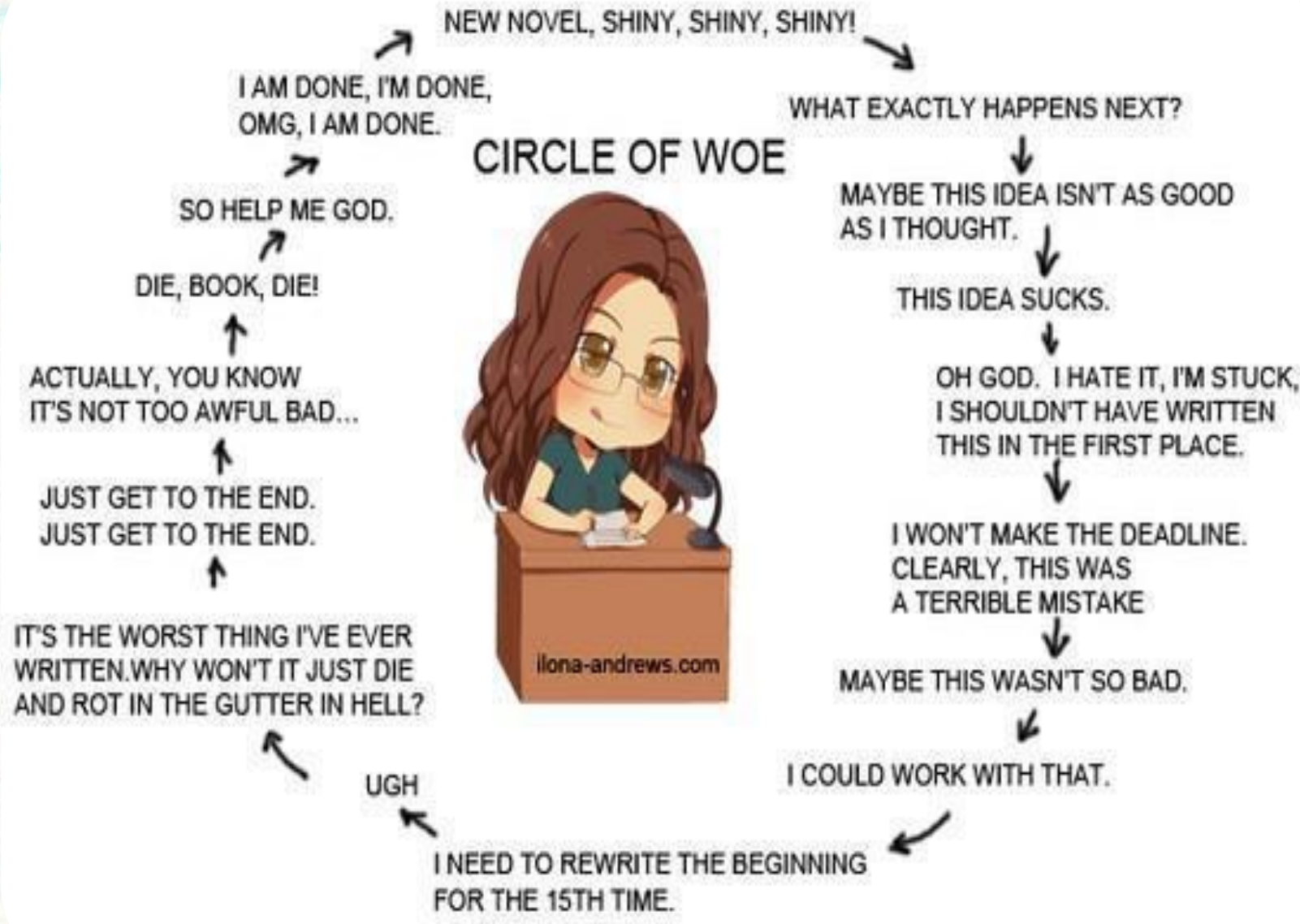
Tip #9

Treat all
work as a
draft



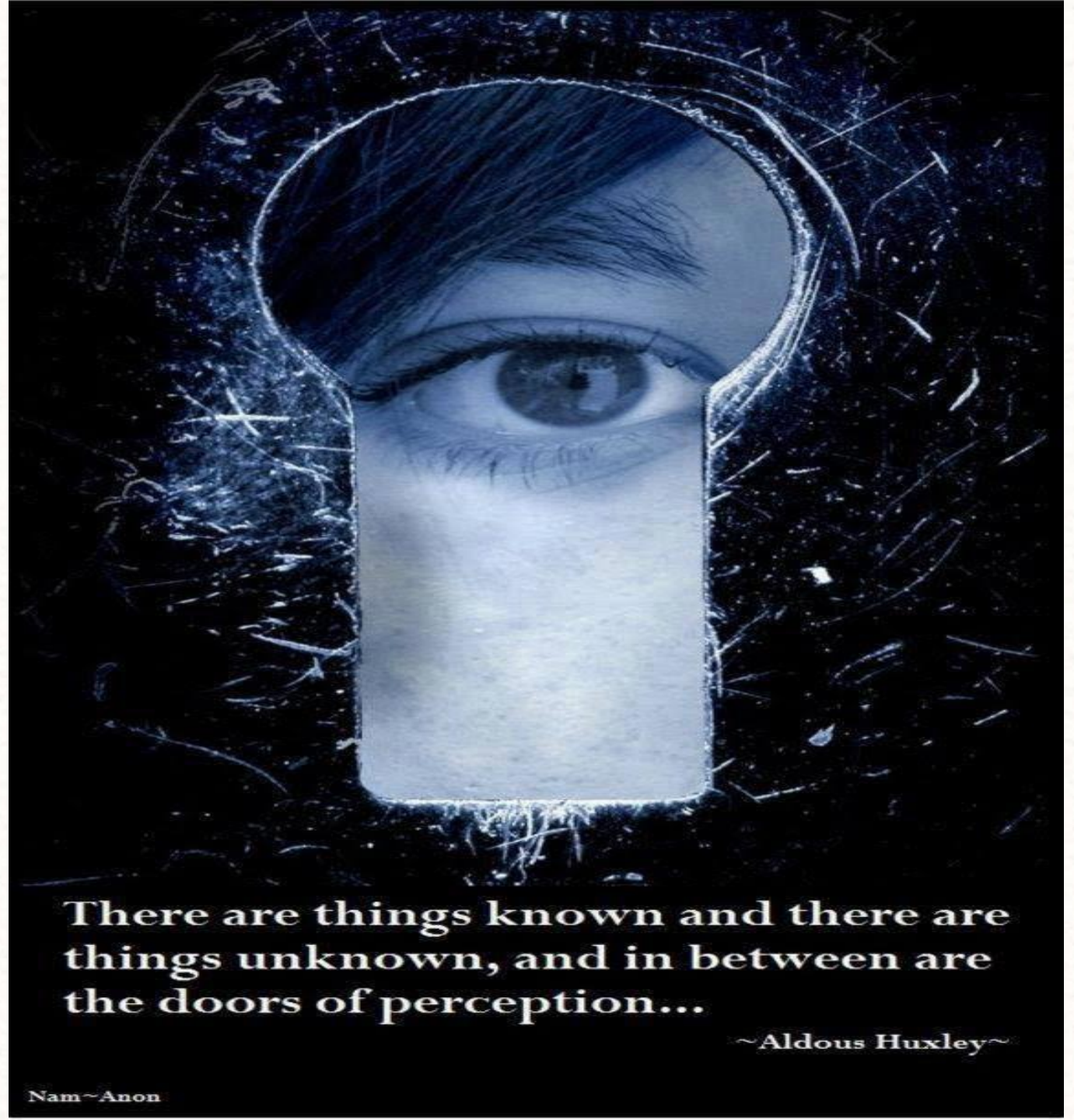
<https://www.youtube.com/watch?v=Kx2ag0S5Zu0>

CIRCLE OF WOE



Tip #10

Self awareness



There are things known and there are things unknown, and in between are the doors of perception...

~Aldous Huxley~

Summary

Top 10 tips

- Qualitative Research is a craft
- Calling out for help
- Learning software- before you need it
- Differentiate the type of coding you are doing
- Think first, computer code second
- Talk about your ideas and analysis
- Start writing much earlier than you think
- Treat all work as a draft
- Self awareness
- (Plus another 1228 tips should you have the time)

Useful resources

Piantanida, M. & Garman, N. B. (2009). *The Qualitative Dissertation: A Guide for Students and Faculty* (2nd ed.). Thousand Oaks, CA: Corwin Press.

Richards, L., & Morse, J. M. (2013). *Readme first for a user's guide to qualitative methods*. (3rded.). Thousand Oaks, CA: Sage.

The Qualitative Report Guide to Qualitative Research Websites: Curated by Dr. R.J. Chenail: This is a resource site for online communities, research centers, learning resources and qualitative researchers.
<https://tqr.nova.edu/websites/>

