



Graduate
Students'
Association

2021-2022





Graduate Students' Association

Welcome to the U of A!

As a member of the Graduate Students' Association (GSA), you have access to a number of services and benefits that the GSA offers:

- [GSA Health and Dental Plan](#)
- [Graduate Student Assistance Program](#)
- [GSA grants, bursaries, and awards](#)
- Advice about the GSA-negotiated [Collective Agreement](#) for academically-employed graduate students
- Group rates from our recommended provider [TDIMM Home and Auto Insurance](#)
- [Kids & Company Child Care](#)
- [U-Pass](#) and
- [Advocacy](#) and advising.

The GSA provides the following funding opportunities for members:

- Academic Travel Grants
- Child Care Grants
- Graduate Student Group Grants
- Emergency Bursaries and
- Recognition Awards.

The GSA is operating remotely and offering:

Virtual Front Desk

Graduate Student Orientation via e-Class

Contact Information

gsa.frontdesk@ualberta.ca

780.492.2175

The GSA office is on the first floor of Triffo Hall. Email us at gsa.frontdesk@ualberta.ca or access our website to visit our virtual front desk.

uab.ca/gsa



Mental Health Resources

Mental Health Quick Resources Guide

Do you need help or support? Use these on- and off-campus resources:

Website: www.ualberta.ca/current-students/need-help-now

Graduate Student Assistance Program (GSAP)

Offered through Homewood Health, this program can connect GSA members to solution-focused counselling and advice on a broad range of issues, including managing anxiety and depression, controlling substance use, resolving family conflict, and a variety of other psychological and wellness issues.

To access GSAP services, contact Homewood Health 24 hours a day, 7 days a week, 365 days a year:

Client Service: 780.428.7587

Website: www.homewoodhealth.com

Counselling & Clinical Services

Counselling & Clinical Services offers free, short-term, confidential psychology services. Graduate students interested in counselling should call 780.492.5205.

Website: www.ualberta.ca/current-students/counselling

Community Social Work Team

The Community Social Work Team is overseen by the Office of the Dean of Students, and provides support to students in connecting with each other, the campus community, and to resources on and off campus.

Website: www.ualberta.ca/current-students/wellness-supports/misc/cswt

Community Helpers Program

The Community Social Work Team also organizes the Community Helpers Program which provides training in peer support for mental health and well-being to students and staff at the University of Alberta.

Website: www.ualberta.ca/current-students/wellness-supports/mh-skills/community-helpers

COVID-19 Resources

Resources

GSA COVID-19 Page: <https://www.ualberta.ca/graduate-students-association/about/news/2020/covid19roundup.html>

FGSR COVID-19 Page: <https://www.ualberta.ca/graduate-studies/about/fgsr-covid19>

U of A COVID-19 Page: <https://www.ualberta.ca/covid-19/index.html>

COVID-19 Information For Students in Residences: <https://www.ualberta.ca/residence/covid-19/index.html>

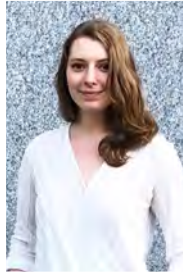
GSA President,
Anas Fassih



GSA Vice-President Academic, Kathy
Haddadkar



GSA Vice-President External,
Mohd Tahsin Bin Mostafa



GSA Vice-President Labour,
Jessica Grenke



GSA Vice-President Student
Services, Paresh Kumar

On behalf of the executive team, welcome to the University of Alberta and to our Graduate Students' Association!

The GSA advocates on behalf of all UAlberta graduate students in pursuit of a supportive, respectful, and inclusive community that promotes the multi-faceted roles played by graduate students. We provide many benefits and services to our members for the betterment of their educational experience; you can find details on these programs in this planner. We are committed to supporting our members throughout their time at the University and, should you require assistance during your tenure, we encourage you to get in touch.

Our association also comprises the union for academically-employed graduate students, working to advance and protect their rights as essential workers of the university. If you hold a Graduate Teaching Assistantship, Graduate Research Assistantship, or Graduate Research Assistant Fellowship, then you are a unionized worker who benefits from contractual and legal protections. I would encourage you to review the Collective Agreement and stay up-to-date on the bargaining process, as engaged membership is key to a successful union.

I wish you all a year of success in your academic pursuits and beyond, despite these uncertain times.

With kind regards,



Anas Fassih, GSA President 2021-2022

GSA Contacts

2021-2022 Directly-Elected Officers

Anas Fassih	President	gsa.president@ualberta.ca
Kathy Haddadkar	Vice-President Academic	gsa.vpacademic@ualberta.ca
Mohd Tahsin Bin Mostafa	Vice-President External	gsa.vpexternal@ualberta.ca
Jessica Grenke	Vice-President Labour	gsa.vplabour@ualberta.ca
Paresh Kumar	Vice-President Student Services	gsa.vpstudentservices@ualberta.ca

2021-2021 Council-Elected Officers

Lauren Hill	Speaker	gsa.speaker@ualberta.ca
Muneeb Mohiuddin	Chief Returning Officer	gsa.elections@ualberta.ca
Peter Isesele	Senator	gsa.senator@ualberta.ca

Administrative/Professional Staff

Courtney Thomas, PhD	Executive Director	gsaed@ualberta.ca
Erika Heiberg, MA	Associate Director	gsaad@ualberta.ca



What is the GSA?

The GSA is a corporation established under the province's [Post-Secondary Learning Act \(PSLA\)](#) as the official representative body for more than 8,000 graduate students at the University of Alberta. The GSA has representatives on the Board of Governors, the General Faculties Council and all its committees, the Faculty of Graduate Studies and Research Council, the Senate, and the Alumni Council.

The GSA's graduate student leaders advocate on important issues that improve your graduate school experience. Visit the [GSA website](#) to learn more about this work and how it benefits you.

As a stand-alone entity, the GSA is governed by a Council, led by an elected executive team, and run by a professional staff reporting regularly to GSA [Council](#). The GSA has its own lawyers, auditor, chartered accountant, and professional staff, and administers over \$950,000 in grants, bursaries, and awards annually. In addition to providing many services to GSA members, the GSA is a founding member of the Campus Food Bank and also negotiates an agreement regarding academically-employed graduate students with the Board of Governors of the University of Alberta.

Membership, Rights, and Privileges of GSA Members

All full- and part-time registered graduate students while they are registered (where applicable) at the University of Alberta after being admitted to the Faculty of Graduate Studies and Research are considered members of the GSA. As a GSA member, you can:

- ♦ Access [GSA services](#)
- ♦ Vote in all [GSA elections and referenda](#) and
- ♦ Seek [nomination to any of the GSA's representative positions](#).

GSA General Election

Every year, the GSA holds a [general election](#) for the executive positions of:

- ♦ President
- ♦ Four Vice-Presidents *and*
- ♦ Ten Councillors-at-Large.

You can help shape the student experience and gain valuable experience by [running for elected office](#) (certain positions receive a stipend). Watch the GSA newsletter for information about the GSA's Discover Governance program, designed to help guide graduate students interested in governance.



What is the GSA?

GSA Governance and GSA Council

Under the *PSLA*, responsibility for the governance of the GSA is in the hands of GSA Council. The GSA Council is comprised of:

- ♦ [Elected GSA executives](#) (President and four Vice-Presidents)
- ♦ Council-Elected members
- ♦ One representative from each department, faculty, or extra departmental unit at the University that offers a graduate program *and*
- ♦ Ten Councillors-at-Large.

All GSA members may attend open session meetings of GSA Council as observers. Members may be nominated for a seat on GSA Council through their departments, or as a Councillor-at-Large during the GSA General Election. For a seat on any GSA committee or University committee with GSA representation, members may seek election through the GSA Nominating Committee; opportunities are advertised regularly through the GSA newsletter.

GSA Council has delegated a number of responsibilities to the:

- ♦ GSA Board (the senior administrative authority of the GSA and the

discussion forum for the GSA executive team and Directors)

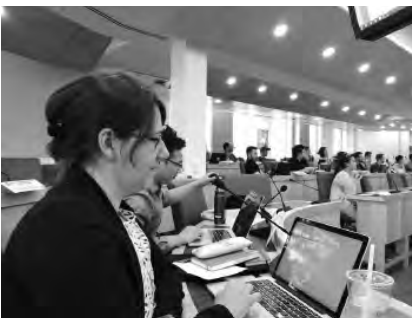
- ♦ GSA Council's standing committees (responsible for advising and recommending to GSA Council on policy and/or other specific tasks) *and*
- ♦ GSA executive team.

GSA Council meets monthly throughout the year. The meeting schedule, all materials, and minutes of past meetings can be found on the GSA website.

GSA Committees

The work of the GSA is supported by the efforts of eight standing committees that advise GSA Council on matters and policies relevant to their mandates, and have authority to take actions set out within those mandates (*GSA Bylaw and Policy, Section F: GSA Standing Committees*).

For more information on any of these committees, or if you are interested in getting involved in a committee, please contact the Elections Coordinator at gsa.nomcomm@ualberta.ca. The GSA Nominating Committee frequently communicates opportunities to serve on various committees via the GSA newsletter, and through the GSA website and other GSA social media platforms.



Labour Advocacy

Labour Advocacy and Advice

Under Section 58.4(1)(c) of the [Labour Relations Code](#), the GSA is “the bargaining agent for academically-employed graduate students” and is to act with “exclusive authority” in representing graduate students in negotiating the [Graduate Student Assistantship Collective Agreement \(CA\)](#). The process is outlined in [GSA Bylaw and Policy](#), Section Q: Collective Bargaining.

The CA is a legally binding agreement between the GSA and the University Board of Governors that contains the regulations governing graduate students who are academically-employed as Graduate Teaching Assistants (GTAs), including Principal Instructors (PIs), Graduate Research Assistants (GRAs), and graduate students with a Graduate Research Assistant Fellowships (GRAF).

*As your union, we
champion, advance, and
protect your rights as
workers*

To learn about the CA, you can consult the CA provides content requirements for Letters of Appointment, outlines minimum stipend rates, describes leaves and benefits, outlines expectations for safe work environments, and stipulates a dispute resolution process for academically-employed full document on our website. The GSA also regularly communicates through emails to academically-employed graduate students.

You are encouraged to approach the GSA for assistance if you have any questions or concerns related to

employment under the CA. Call the GSA office at 780.492.2175, contact the Vice-President Labour at gsa.vplabour@ualberta.ca, or Associate Director, Erika Heiberg, at gsaad@ualberta.ca.



For more information visit uab.ca/gsa

GSA Services

Graduate Student Assistance Program (GSAP)

All GSA members are able to access the GSAP provided by Homewood Health. Homewood Health adopts a holistic approach to program delivery, with a belief that an Assistance Program must offer more than just psychological counselling, and must also appeal to graduate students who could benefit from other important health supporting services.

In addition to face-to-face services, Homewood Health offers telephonic and web-based services and e-learning opportunities. These services are accessible 24 hours a day, 7 days a week.

Please visit their website at www.homewoodhealth.com for more information.

GSAP Services Include:

- ◆ Individual assessment and psychological counselling for a wide range of issues
- ◆ Provision of individual, couples, and family counselling
- ◆ Individual monitoring and post-therapy follow-up as appropriate
- ◆ Referral to community resources where appropriate
- ◆ Comprehensive work life services and programs (legal, financial, fitness, nutritional, childcare, and eldercare consultations)
- ◆ Career counselling
- ◆ Access to health promotion/wellness print and electronic resources *and*
- ◆ Crisis intervention, either work-related or personal.

All GSA members are eligible to use this program through the GSAP fee assessed to all graduate students. This is a mandatory program, established by a referendum passed by graduate students and there is no opt-out option. Partners and dependants of GSA members are also able to access GSAP services.





TD Insurance Meloche Monnex Affinity Partnership for Home and Automobile Insurance

The GSA has negotiated a group rate with TD Insurance Meloche Monnex to provide GSA members with preferred automobile and home insurance.

You may contact them either by phone at 1.800.339.1847 or through their website at www.tdinsurance.com/affinity/ualbertagsa to obtain a quote. Please identify yourself as a GSA member to receive a preferred-rate quote. You may be asked to provide proof of your registration as a graduate student at the U of A.

You may obtain enrollment verification through Bear Tracks for submission to TD Insurance Meloche Monnex.

GSA Recognition Awards

GSA Awards Night is held annually in the spring to recognize GSA members, their supporters, and graduate student groups for their achievements and contributions to the University community. Award categories range from graduate student teaching and research to community service and outreach. Funding for [GSA Recognition Awards](#) is provided by external sponsors and the Graduate Student Support Fund (GSSF), which is part of negotiated funding the GSA receives from the University to support and recognize its members.

More information and nomination forms are available on the GSA website once the competition opens and information is sent to GSA members through the GSA newsletter.



For more information visit uab.ca/gsa

GSA Services

Funding

GSA funding opportunities include:

- ♦ **Academic Travel Grants:** provided to GSA members through the GSSF to help offset the cost of participation in academic activities such as conferences and research trips that are directly related to their current academic programs.
- ♦ **Child Care Grants:** provided through the GSSF to help offset the cost of child care for GSA members.
- ♦ **Graduate Student Group Grants:** provided by the GSA to offset the cost of the academic activities of graduate student groups, such as seminars, guest lecturers, or colloquia.
- ♦ **Emergency Bursaries:** provided through the GSSF, a non-repayable bursary for GSA members who need assistance due to an unanticipated emergency.

Current policies, information, and online application forms can be found on our website. Questions about GSA funding opportunities should be directed to gsa_grants@ualberta.ca.

Campus Food Bank

Email: foodbank@ualberta.ca

Website: campusfoodbank.com

Established by the GSA in 1991, the Campus Food Bank was the first of its kind in Canadian universities. Now a joint service, proudly sponsored by the Graduate Students' Association and the Students' Union, it is just one of an estimated 50 campus food banks across Canada.

The Campus Food Bank distributes emergency food hampers and toiletries to all members of the University community — students (graduate and undergraduate), staff (academic and non-academic), alumni, and their families. It also provides referrals to other services that may be of use to their clients. Please support the Campus Food Bank with a donation of food, toiletries, money, or time. If you are in need, please do not hesitate to use their confidential services.



Universal Transit Pass (U-Pass)

The Universal Transit Pass (U-Pass) is an initiative of the University's student associations, local transit authorities, and the University of Alberta to deliver affordable and sustainable transit service to the U of A.

What is the U-Pass?

The U-Pass is a transit pass program that permits currently enrolled graduate students at the U of A unlimited access to regular Edmonton, St. Albert, Spruce Grove, Leduc, Fort Saskatchewan, Beaumont, and Strathcona County Transit systems during the Fall (September – December), Winter (January – April) and Spring/Summer (May – August) terms. The U-Pass must be on the owner's person in proof of payment areas at all times. The U-Pass will be transitioning from a sticker-based system attached to the ONEcard to an ARC Smart Fare Card. Please check the U-Pass website for more information and updates on this transition.

Course-based Masters students will not be automatically assessed the Spring/Summer U-Pass. If they choose to take courses in the spring or summer they will be assessed the fee upon registration.

Thesis students must demonstrate that they are away for two or more months in a specific term to receive an exemption for the U-Pass assessment; this will require a letter from the students' supervisor confirming the time the student is out of the serviceable area.

How Does the U-Pass Program Work?

U-Pass is a transit fare program, which lowers the cost of transit for GSA members.

Each term GSA members pay a mandatory U-Pass fee, which is much lower than the cost of purchasing monthly passes for the same period because costs are spread over a large participant base.

The GSA executives continue to advocate to the city for affordable and flexible transit options for students amidst the current pandemic and will update members via the GSA newsletter. You can also watch the U-Pass website for details.

For more information about the U-Pass visit www.ualberta.ca/current-students/upass. For updated transit information and route changes, please visit ETS: <https://www.edmonton.ca/edmonton-transit-system-ets>



For more information visit uab.ca/gsa

GSA Health & Dental Plan*



Make the most out of it

The Plan is designed to fill the gaps in provincial health care.

Who's automatically covered?

Graduate students registered full-time (for at least 9 graduate credits) in the Fall or Winter Term, including eligible international students and Fort McMurray MBA program students

Change-of-Coverage Period

Fall Term (enrolments and opt outs):
Sept. 1 – 23, 2021

Winter Term (enrolments and opt outs for new students only): Jan. 3 – 24, 2022

Spring Term (enrolments for new students only): May 9 – 24, 2022

*Please note that at the time of printing, benefits for 2021-2022 were still subject to change. For complete details, visit www.studentcare.ca in August.

What's covered?



Over
\$10,000
Health Coverage



Over
\$400
Vision Coverage



Up to
\$650
Dental Coverage



Up to
\$5,000,000
Travel Coverage

For complete coverage details and eligibility, visit www.studentcare.ca.



STUDENTCARE

Questions?
9 am to 5 pm on weekdays
www.studentcare.ca



LIVE CHAT AND
WEB REQUEST FORM
AVAILABLE



DOWNLOAD THE APP

Search **Studentcare mobile** to download now!

Save Money with the Studentcare Networks

By consulting a Network professional, you'll get additional coverage on services like:

- Dental
- Vision
- Physiotherapy
- Psychology
- Chiropractic
- And more...



How much does the Plan cost?

Please visit www.studentcare.ca in August for updated fees.

Can I enrol myself or my family members?

Certain categories of students may enrol themselves. If you're covered by the Plan, you can also enrol your family (spouse and/or dependent children) for an additional fee during the Change-of-Coverage Period. Common law couples are eligible. Visit www.studentcare.ca for more information.

Weigh the cost and benefits

- Being enrolled as a dependant in a parent's or spouse's employee benefit plan usually requires your family member to pay additional costs.
- Coverage under most parental plans ceases once you're no longer a full-time student or when you turn 26.
- You can also combine your student Plan with your other plans to maximize your overall coverage—up to 100%—and eliminate out-of-pocket costs.

The ease of claiming at your fingertips

Discover the **Studentcare mobile** app, which lets you submit claims quickly and securely.

Download it for free from the **App Store** or **Google Play**.



Questions?
9 am to 5 pm on weekdays
www.studentcare.ca



**LIVE CHAT AND
WEB REQUEST FORM
AVAILABLE**



DOWNLOAD THE APP

Search **Studentcare mobile** to download now!

International

University of Alberta International

University of Alberta International is committed to helping students adjust to life in Canada, and to provide a supportive environment while studying at UAlberta.

The International Student Services team — at the International Services Centre — provides services, events, and programming that help students accomplish their academic and personal goals. This team of international experts is ready to coach students towards a successful university experience.

The International Services Centre (142 Telus Centre, 87 Ave and 111 St) is the place to visit for personal one-on-one advising.

Advisors can answer questions on a variety of issues including study permits and visas, financial support, health care, and more. They also offer support and strategies for coping with homesickness, adjusting to a new culture, building a community of friends, and relating to others.

Visit the UAI website for more information:
<https://www.ualberta.ca/international>

International Student Services programs include:

- ♦ Online Orientation – An orientation program to help international students apply for a work or student permit; find housing; provide information about health insurance and more!
- ♦ English Conversation Club – Improve your English speaking skills. Join this informal club to engage in English conversations. The club meets every Friday afternoon.



U of A Services

Dean of Students - Portfolio of Student Services

5-02 SUB | 780-492-4145 | dosdean@ualberta.ca | uab.ca/dos

Academic Success Centre

1-80 SUB | 780-492-2682 | success@ualberta.ca | uab.ca/success

Career Centre

2-100 SUB | 780-492-4291 | yourcareercentre@ualberta.ca | uab.ca/cc

Centre for Writers

1-42 Assiniboia Hall | 780-492-2639 | centreforwriters@ualberta.ca | uab.ca/C4W

Counselling and Clinical Services

2-600 SUB | 780-492-5205 | uab.ca/CCS

Dean of Students Wellness Team

780-492-6272 | doshelp@ualberta.ca | uab.ca/ACCESS

First Peoples' House

2-400 SUB | 780-492-5677 | fph@ualberta.ca | uab.ca/FPH

La Centrale - Pôle de Réussite et d'Excellence (Campus Saint-Jean)

Local 2-52 Pavillion McMahon | 780-465-8797 | lacentrale@ualberta.ca | lacentrale.csj.ualberta.ca

Office of the Student Ombuds

2-702 SUB | 780-492-4689 | ombuds@ualberta.ca | uab.ca/Ombuds

Residence Services

1-044 Lister Centre | 780-492-4242 | East Campus Residence | 780-492-3345 | housing@ualberta.ca | uab.ca/residence

Sexual Assault Centre

2-705 SUB | 780-492-9771 | sexualassaultcentre@ualberta.ca | uab.ca/SACentre

Student Conduct and Accountability

1-04 Triffo Hall | 780-492-0777 | studentconduct@ualberta.ca | uab.ca/conduct

Student and Residence Services Office (Augustana Campus)

Room L2-104 Learning Commons | 780-679-1163 | studentservices@augustana.ca | ualberta.ca/augustana/services

University Health Centre

2-200 SUB | 780-492-2612 | hws@ualberta.ca | uab.ca/UHC



For more information visit uab.ca/gsa

Message from the Dean of Students

Welcome to your 2021-2022 academic journey. You are valued members of our university community as students, researchers, and teachers. I am glad that you have chosen to pursue your academic goals at the University of Alberta.

We are deeply committed to broadening participation in higher education and to creating a more diverse and inclusive scholarly community. Diversity of perspectives and opinions is crucial to the functioning of an academic community.

The skills you develop while at the U of A will forge and strengthen partnerships, create greater opportunities for you to make a difference, and lead you to experience and reflect critically.

Many resources are available to you during the course of your graduate education. To support your wellbeing, the Office of the Dean of Students is committed to providing you with the support and resources you need, when you need them. Get in touch with us. We look forward to hearing from you.

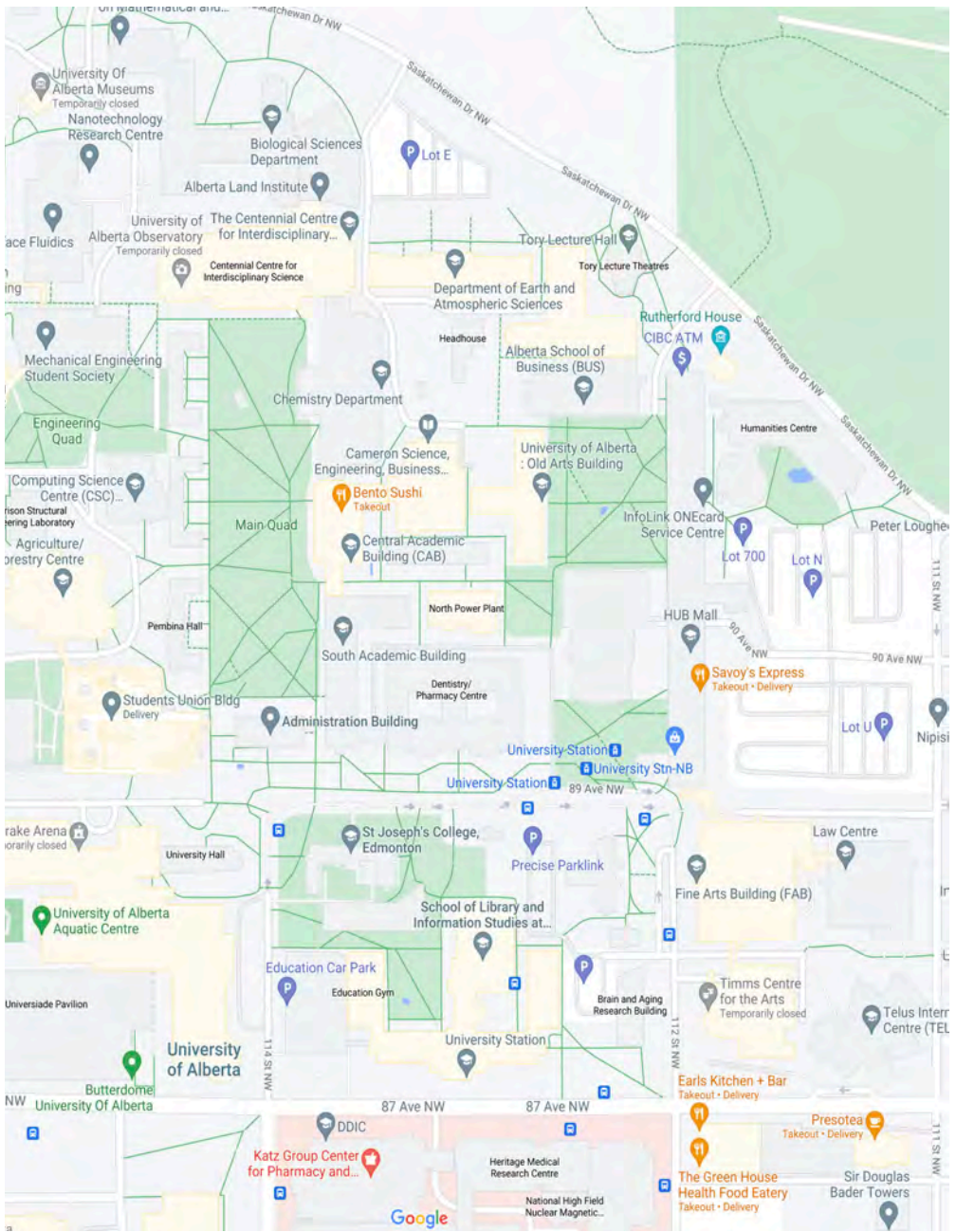
Dr. André Costopoulos
Vice-Provost and Dean of Students



Photo: Owen Egan

Office of the Dean of Students
5-02 SUB | 780-492-4145
dosdean@ualberta.ca | uab.ca/dos

The Office of the Dean of Students supports all students in the pursuit of academic and personal success. We provide leadership on university policies and initiatives and collaborate with faculties, offices, and services across all U of A campuses to deliver effective programming that is accessible to all students.



Message to Students from the Vice-Provost and Dean of the Faculty of Graduate Studies and Research



Welcome to the University of Alberta and the Faculty of Graduate Studies and Research (FGSR). We are home to more than 8000 graduate students in over 500 programs, with the most diverse student body on the University of Alberta campus.

Our mission is to support you by providing the highest quality service to ensure that you reach your full potential both as a scholar and a professional. Our staff and team of associate deans are committed to partnering with the disciplinary faculties and departments to make every stage of your academic journey a success.

We offer a variety of programs and supports to help students meet their academic goals; these include thesis-writing boot camps, sessions on research ethics and intellectual property, scholarship writing seminars, and the Graduate Teaching and Learning (GTL) program. FGSR is also focused on graduate student professional development, and through our Graduate Student Internship Program students can connect with enthusiastic employers within our local community and beyond while gaining valuable work experience. In addition, given the importance of maintaining one's health and overall well-being, we encourage you to take time out from your studies to participate in the various wellness activities that are offered by the UofA and FGSR throughout the year.

If you need assistance navigating university regulations, if you want to access various resources on campus, or if you require information on registration, fees, scholarships, and special funding opportunities, please explore our website (uab.ca/gradstudies), or email grad.mail@ualberta.ca.

Everyone at FGSR works collectively to see each student achieve positive, transformational experiences during their graduate school years. This year we are working hard to engage with graduate students and to support them as the university community transitions back to a more in-person, post-pandemic experience.

I hope you make the most of all that FGSR and the UofA have to offer you as you embark on your journey of growth and discovery.

With best wishes,
Brooke Milne, PhD
Vice-Provost and Dean
Faculty of Graduate Studies and Research

Faculty of
Graduate
Studies +
Research



Ethics and Academic
Citizenship Requirement

It's time to do ethics a new way!

Coming Fall 2022 | Early registration Fall 2021

The Ethics and Academic Citizenship Requirement will replace the current ethics requirement. Now you can complete your ethics through self-paced, online courses that set you on a path for success.



INT D 710: Ethics and Academic Citizenship Academic Accountability and Shared Responsibility (for both master's and doctoral students)

Module 1

Introduction to
Ethics and
Academic
Citizenship

Module 2

Land
Acknowledgment
and Relationship
to the Land

Module 3

Academic
Integrity and
Citizenship

Module 4

Citing the Works
of Others

Module 5

Introduction to
Research Ethics

Module 6

Conflict of Interest

Module 7

Workplace Ethics

Module 8

Health and Your
Academic
Program

INT D 720: Advanced Ethics and Academic Citizenship Teaching and Research Integrity (for doctoral students only)

Module 1

Introduction to
Advanced Ethics
and Academic
Citizenship

Module 2

Indigenization in
Post-Secondary
Institutions

Module 3

Academic
Citizenship as
an Advanced
Researcher

Module 4

Research
and
Scholarship
Integrity

Module 5

Ethical
Principles in
University
Teaching

Learn more and register: uab.ca/eac

@UALbertaFGSR



www.ualberta.ca/graduate-studies

GSA Planners

The GSA office printed GSA planners for distribution to graduate students. Please watch the GSA website and newsletter for distribution information.

As an alternative, we have created the following template of our planner pages for your use. These are 5x5 inches by 8.5 inches, but can be on letter size (A4) paper.

September

Sun	Mon	Tue	Wed	Thur	Fri	Sat
			1	2	3	4
5	6	7	8	9	10	11
12	13	14	15	16	17	18
19	20	21	22	23	24	25
26	27	28	29	30		

2021

NOTES

Academic Success Centre

Helping Graduate Students Develop & Excel

Professional academic workshops and individual appointments for every step of your graduate studies, including:

- theses, proposals, articles, and reviews,
- time, work, and exam management,
- orals, OSCEs, and presentations, and
- academic copy editing.



Visit uab.ca/success



UNIVERSITY OF ALBERTA
OFFICE OF THE DEAN OF STUDENTS

August/September

Monday

30

Tuesday

31

Wednesday

1

2021

Thursday

2

Friday

3

Saturday

4

Sunday

5

SEPTEMBER
S M T W T F S

1 2 3 4
5 6 7 8 9 10 11
12 13 14 15 16 17 18
19 20 21 22 23 24 25
26 27 28 29 30

September

Monday

6

Labour Day - University Buildings Closed

Tuesday

7

Wednesday

8

2021

Thursday

9

Friday

10

Saturday

11

Sunday

12

SEPTEMBER
S M T W T F S

1 2 3 4
5 6 7 8 9 10 11
12 13 14 15 16 17 18
19 20 21 22 23 24 25
26 27 28 29 30

September

Monday

13

Tuesday

14

Wednesday

15

2021

Thursday

16

Friday

17

Saturday

18

Sunday

19

SEPTEMBER
S M T W T F S

1 2 3 4
5 6 7 8 9 10 11
12 13 14 15 16 17 18
19 20 21 22 23 24 25
26 27 28 29 30

September

Monday

20

GSA Council Meeting - 6 pm

Tuesday

21

Wednesday

22

2021

Thursday

23

Friday

24

Saturday

25

Sunday

26

SEPTEMBER
S M T W T F S

1 2 3 4
5 6 7 8 9 10 11
12 13 14 15 16 17 18
19 20 21 22 23 24 25
26 27 28 29 30

October

Sun	Mon	Tue	Wed	Thur	Fri	Sat
					1	2
3	4	5	6	7	8	9
10	11	12	13	14	15	16
17	18	19	20	21	22	23
24	25	26	27	28	29	30
31						

2021

NOTES

NOTES

September/October

Monday

27

Tuesday

28

Wednesday

29

2021

Thursday

30

Friday

1

Saturday

2

Sunday

3

OCTOBER

S	M	T	W	T	F	S
					1	2
3	4	5	6	7	8	9
10	11	12	13	14	15	16
17	18	19	20	21	22	23
24	25	26	27	28	29	30
					31	

October

Monday

4

Tuesday

5

Wednesday

6

2021

Thursday

7

Friday

8

Saturday

9

Sunday

10

OCTOBER

S	M	T	W	T	F	S
					1	2
3	4	5	6	7	8	9
10	11	12	13	14	15	16
17	18	19	20	21	22	23
24	25	26	27	28	29	30
31						

October

Monday

11

Thanksgiving Day - University Buildings Closed

Tuesday

12

Wednesday

13

2021

Thursday

14

Friday

15

Saturday

16

Sunday

17

OCTOBER						
S	M	T	W	T	F	S
					1	2
3	4	5	6	7	8	9
10	11	12	13	14	15	16
17	18	19	20	21	22	23
24	25	26	27	28	29	30
					31	

October

Monday
18

GSA Council Meeting - 6 pm

Tuesday
19

Wednesday
20

2021

Thursday

21

Friday

22

Saturday

23

Sunday

24

OCTOBER						
S	M	T	W	T	F	S
					1	2
3	4	5	6	7	8	9
10	11	12	13	14	15	16
17	18	19	20	21	22	23
24	25	26	27	28	29	30
						31

October

Monday

25

Tuesday

26

Wednesday

27

2021

Thursday

28

Friday

29

Saturday

30

Sunday

31

OCTOBER						
S	M	T	W	T	F	S
					1	2
3	4	5	6	7	8	9
10	11	12	13	14	15	16
17	18	19	20	21	22	23
24	25	26	27	28	29	30
						31

November

Sun	Mon	Tue	Wed	Thur	Fri	Sat
	1	2	3	4	5	6
7	8	9	10	11	12	13
14	15	16	17	18	19	20
21	22	23	24	25	26	27
28	29	30				

2021

NOTES

THE BLACK DOG FREEHOUSE
10425 WHYTE AVENUE



PURVEYORS OF FINE ALES
AND SPIRITS SINCE 1992.

November

Monday

1

Tuesday

2

Wednesday

3

2021

Thursday

4

Friday

5

Saturday

6

Sunday

7

NOVEMBER
S M T W T F S

1 2 3 4 5 6
7 8 9 10 11 12 13
14 15 16 17 18 19 20
21 22 23 24 25 26 27
28 29 30

November

Monday

8

Fall Term Reading Week

Tuesday

9

Fall Term Reading Week

Wednesday

10

Fall Term Reading Week

2021

Remembrance Day - University Buildings Closed

Thursday

11

Fall Term Reading Week

Friday

12

Saturday

13

Sunday

14

NOVEMBER						
S	M	T	W	T	F	S
		1	2	3	4	5 6
	7	8	9	10	11	12 13
	14	15	16	17	18	19 20
	21	22	23	24	25	26 27
	28	29	30			

November

Monday

15

GSA Council Meeting - 6 pm

Tuesday

16

Wednesday

17

2021

Thursday

18

Friday

19

Saturday

20

Sunday

21

NOVEMBER						
S	M	T	W	T	F	S
		1	2	3	4	5 6
	7	8	9	10	11	12 13
	14	15	16	17	18	19 20
	21	22	23	24	25	26 27
	28	29	30			

November

Monday

22

Tuesday

23

Wednesday

24

2021

Thursday

25

Friday

26

Saturday

27

Sunday

28

NOVEMBER						
S	M	T	W	T	F	S
		1	2	3	4	5
6	7	8	9	10	11	12
13	14	15	16	17	18	19
20	21	22	23	24	25	26
27	28	29	30			

December

Sun	Mon	Tue	Wed	Thur	Fri	Sat
			1	2	3	4
5	6	7	8	9	10	11
12	13	14	15	16	17	18
19	20	21	22	23	24	25
26	27	28	29	30	31	

2021

NOTES

NOTES

November/December

Monday

29

Tuesday

30

Wednesday

1

2021

Thursday

2

Friday

3

Saturday

4

Sunday

5

DECEMBER
S M T W T F S

		1	2	3	4	
5	6	7	8	9	10	11
12	13	14	15	16	17	18
19	20	21	22	23	24	25
26	27	28	29	30	31	

December

Monday

6

Tuesday

7

Wednesday

8

2021

Thursday

9

Friday

10

Saturday

11

Sunday

12

DECEMBER
S M T W T F S

			1	2	3	4
5	6	7	8	9	10	11
12	13	14	15	16	17	18
19	20	21	22	23	24	25
26	27	28	29	30	31	

December

Monday

13

GSA Council Meeting - 6 pm

Tuesday

14

Wednesday

15

2021

Thursday

16

Friday

17

Saturday

18

Sunday

19

DECEMBER						
S	M	T	W	T	F	S
			1	2	3	4
5	6	7	8	9	10	11
12	13	14	15	16	17	18
19	20	21	22	23	24	25
26	27	28	29	30	31	

December

Monday

20

Tuesday

21

Wednesday

22

2021

Thursday

23

Friday

24

Saturday

25

Christmas Holiday Period -
University Buildings Closed

Sunday

26

Christmas Holiday Period -
University Buildings Closed

DECEMBER

S	M	T	W	T	F	S
				1	2	3 4
5	6	7	8	9	10	11
12	13	14	15	16	17	18
19	20	21	22	23	24	25
26	27	28	29	30	31	

January

Sun	Mon	Tue	Wed	Thur	Fri	Sat
						1
2	3	4	5	6	7	8
9	10	11	12	13	14	15
16	17	18	19	20	21	22
23	24	25	26	27	28	29
30	31					

2022

NOTES

December/January

Monday

27

Christmas Holiday Period - University Buildings Closed

Tuesday

28

Christmas Holiday Period - University Buildings Closed

Wednesday

29

Christmas Holiday Period - University Buildings Closed

2022

Christmas Holiday Period - University Buildings Closed

Thursday
30

Christmas Holiday Period - University Buildings Closed

Friday
31

Saturday
1

New Year's Day - University Buildings Closed

Sunday
2

JANUARY						
S	M	T	W	T	F	S
						1
2	3	4	5	6	7	8
9	10	11	12	13	14	15
16	17	18	19	20	21	22
23	24	25	26	27	28	29
30	31					

January

Monday

3

Tuesday

4

Wednesday

5

2022

Thursday

6

Friday

7

Saturday

8

Sunday

9

JANUARY						
S	M	T	W	T	F	S
						1
2	3	4	5	6	7	8
9	10	11	12	13	14	15
16	17	18	19	20	21	22
23	24	25	26	27	28	29
30	31					

January

Monday

10

Tuesday

11

Wednesday

12

2022

Thursday

13

Friday

14

Saturday

15

Sunday

16

JANUARY						
S	M	T	W	T	F	S
						1
2	3	4	5	6	7	8
9	10	11	12	13	14	15
16	17	18	19	20	21	22
23	24	25	26	27	28	29
30	31					

January

Monday
17

GSA Council Meeting - 6 pm

Tuesday
18

Wednesday
19

2022

Thursday

20

Friday

21

Saturday

22

Sunday

23

JANUARY						
S	M	T	W	T	F	S
						1
2	3	4	5	6	7	8
9	10	11	12	13	14	15
16	17	18	19	20	21	22
23	24	25	26	27	28	29
30	31					

January

Monday

24

Tuesday

25

Wednesday

26

2022

Thursday

27

Friday

28

Saturday

29

Sunday

30

JANUARY						
S	M	T	W	T	F	S
						1
2	3	4	5	6	7	8
9	10	11	12	13	14	15
16	17	18	19	20	21	22
23	24	25	26	27	28	29
30	31					

February

Sun	Mon	Tue	Wed	Thur	Fri	Sat
		1	2	3	4	5
6	7	8	9	10	11	12
13	14	15	16	17	18	19
20	21	22	23	24	25	26
27	28					

2022



The Centre for Writers (C4W) offers **FREE** online one-on-one writing support for U of A students, staff, and instructors - in any faculty and at any level of study.

Book your appointment on our online schedule (ualberta.mywonline.net), or email us your drafts at c4wonline@ualberta.ca.

Contact us or Google chat with us at centreforwriters@ualberta.ca.

www.uab.ca/C4W



January/February

Monday

31

Tuesday

1

Wednesday

2

2022

Thursday

3

Friday

4

Saturday

5

Sunday

6

FEBRUARY						
S	M	T	W	T	F	S
		1	2	3	4	5
6	7	8	9	10	11	12
13	14	15	16	17	18	19
20	21	22	23	24	25	26
27	28					

February

Monday

7

Tuesday

8

Wednesday

9

2022

Thursday

10

Friday

11

Saturday

12

Sunday

13

FEBRUARY
S M T W T F S

1 2 3 4 5
6 7 8 9 10 11 12
13 14 15 16 17 18 19
20 21 22 23 24 25 26
27 28

February

Monday

14

Tuesday

15

Wednesday

16

2022

Thursday

17

Friday

18

Saturday

19

Sunday

20

FEBRUARY
S M T W T F S

1 2 3 4 5
6 7 8 9 10 11 12
13 14 15 16 17 18 19
20 21 22 23 24 25 26
27 28

February

Monday
21

Family Day - University Buildings Closed

Tuesday
22

Winter Term Reading Week

Wednesday
23

Winter Term Reading Week

2022

Winter Term Reading Week

Thursday

24

Winter Term Reading Week

Friday

25

Saturday

26

Sunday

27

FEBRUARY						
S	M	T	W	T	F	S
		1	2	3	4	5
6	7	8	9	10	11	12
13	14	15	16	17	18	19
20	21	22	23	24	25	26
27	28					

March

Sun	Mon	Tue	Wed	Thur	Fri	Sat
		1	2	3	4	5
6	7	8	9	10	11	12
13	14	15	16	17	18	19
20	21	22	23	24	25	26
27	28	29	30	31		

2022

NOTES

February/March

Monday
28

GSA Council Meeting - 6 pm

Tuesday
1

Wednesday
2

2022

Thursday

3

Friday

4

Saturday

5

Sunday

6

MARCH						
S	M	T	W	T	F	S
		1	2	3	4	5
6	7	8	9	10	11	12
13	14	15	16	17	18	19
20	21	22	23	24	25	26
27	28	29	30	31		

March

Monday

7

Tuesday

8

Wednesday

9

2022

Thursday

10

Friday

11

Saturday

12

Sunday

13

MARCH						
S	M	T	W	T	F	S
		1	2	3	4	5
6	7	8	9	10	11	12
13	14	15	16	17	18	19
20	21	22	23	24	25	26
27	28	29	30	31		

March

Monday

14

Tuesday

15

Wednesday

16

2022

Thursday

17

Friday

18

Saturday

19

Sunday

20

MARCH						
S	M	T	W	T	F	S
		1	2	3	4	5
6	7	8	9	10	11	12
13	14	15	16	17	18	19
20	21	22	23	24	25	26
27	28	29	30	31		

March

Monday
21

GSA Council Meeting - 6 pm

Tuesday
22

Wednesday
23

2022

Thursday

24

Friday

25

Saturday

26

Sunday

27

MARCH						
S	M	T	W	T	F	S
		1	2	3	4	5
6	7	8	9	10	11	12
13	14	15	16	17	18	19
20	21	22	23	24	25	26
27	28	29	30	31		

April

Sun	Mon	Tue	Wed	Thur	Fri	Sat
					1	2
3	4	5	6	7	8	9
10	11	12	13	14	15	16
17	18	19	20	21	22	23
24	25	26	27	28	29	30

2022

NOTES

March/April

Monday

28

Tuesday

29

Wednesday

30

2022

Thursday

31

Friday

1

Saturday

2

Sunday

3

APRIL

S M T W T F S

					1	2
3	4	5	6	7	8	9
10	11	12	13	14	15	16
17	18	19	20	21	22	23
24	25	26	27	28	29	30

April

Monday

4

Tuesday

5

Wednesday

6

2022

Thursday

7

Friday

8

Saturday

9

Sunday

10

APRIL						
S	M	T	W	T	F	S
						1 2
3	4	5	6	7	8	9
10	11	12	13	14	15	16
17	18	19	20	21	22	23
24	25	26	27	28	29	30

April

Monday

11

Tuesday

12

Wednesday

13

2022

Thursday

14

Good Friday - University Buildings Closed

Friday

15

Saturday

16

Easter - University
Buildings Closed

Sunday

17

APRIL						
S	M	T	W	T	F	S
						1 2
3	4	5	6	7	8	9
10	11	12	13	14	15	16
17	18	19	20	21	22	23
24	25	26	27	28	29	30

April

Monday
18

Easter Monday - University Buildings Closed

Tuesday
19

Wednesday
20

2022

Thursday

21

Friday

22

Saturday

23

Sunday

24

APRIL						
S	M	T	W	T	F	S
						1 2
3	4	5	6	7	8	9
10	11	12	13	14	15	16
17	18	19	20	21	22	23
24	25	26	27	28	29	30

May

Sun	Mon	Tue	Wed	Thur	Fri	Sat
1	2	3	4	5	6	7
8	9	10	11	12	13	14
15	16	17	18	19	20	21
22	23	24	25	26	27	28
29	30	31				

2022

NOTES

April/May

Monday

25

GSA Council Meeting - 6 pm

Tuesday

26

Wednesday

27

2022

Thursday

28

Friday

29

Saturday

30

Sunday

1

May

S M T W T F S

1 2 3 4 5 6 7
8 9 10 11 12 13 14
15 16 17 18 19 20 21
22 23 24 25 26 27 28
29 30 31

May

Monday

2

Tuesday

3

Wednesday

4

2022

Thursday

5

Friday

6

Saturday

7

Sunday

8

May						
S	M	T	W	T	F	S
1	2	3	4	5	6	7
8	9	10	11	12	13	14
15	16	17	18	19	20	21
22	23	24	25	26	27	28
29	30	31				

May

Monday

9

Tuesday

10

Wednesday

11

2022

Thursday

12

Friday

13

Saturday

14

Sunday

15

May
S M T W T F S

1 2 3 4 5 6 7
8 9 10 11 12 13 14
15 16 17 18 19 20 21
22 23 24 25 26 27 28
29 30 31

May

Monday
16

GSA Council Meeting - 6 PM

Tuesday
17

Wednesday
18

2022

Thursday

19

Friday

20

Saturday

21

Sunday

22

May							
S	M	T	W	T	F	S	
	1	2	3	4	5	6	7
8	9	10	11	12	13	14	
15	16	17	18	19	20	21	
22	23	24	25	26	27	28	
29	30	31					

May

Monday
23

Victoria Day - University Buildings Closed

Tuesday
24

Wednesday
25

2022

Thursday

26

Friday

27

Saturday

28

Sunday

29

May
S M T W T F S

1 2 3 4 5 6 7
8 9 10 11 12 13 14
15 16 17 18 19 20 21
22 23 24 25 26 27 28
29 30 31

June

Sun	Mon	Tue	Wed	Thur	Fri	Sat
			1	2	3	4
5	6	7	8	9	10	11
12	13	14	15	16	17	18
19	20	21	22	23	24	25
26	27	28	29	30		

2022



UNIVERSITY
OF ALBERTA



Make A Difference And make *friends* too

Volunteer with the Sustainability Council. Together, we will engage the university community on climate action, plastic waste, conservation, the Sustainable Development Goals and more.

ualberta.ca/sustainability

May/June

Monday

30

Tuesday

31

Wednesday

1

2022

Thursday

2

Friday

3

Saturday

4

Sunday

5

JUNE

S M T W T F S

			1	2	3	4
5	6	7	8	9	10	11
12	13	14	15	16	17	18
19	20	21	22	23	24	25
26	27	28	29	30		

June

Monday

6

Tuesday

7

Wednesday

8

2022

Thursday

9

Friday

10

Saturday

11

Sunday

12

JUNE						
S	M	T	W	T	F	S
				1	2	3 4
5	6	7	8	9	10	11
12	13	14	15	16	17	18
19	20	21	22	23	24	25
26	27	28	29	30		

June

Monday

13

Tuesday

14

Wednesday

15

2022

Thursday

16

Friday

17

Saturday

18

Sunday

19

JUNE

S M T W T F S

			1	2	3	4
5	6	7	8	9	10	11
12	13	14	15	16	17	18
19	20	21	22	23	24	25
26	27	28	29	30		

June

Monday
20

GSA Council Meeting - 6 pm

Tuesday
21

Wednesday
22

2022

Thursday

23

Friday

24

Saturday

25

Sunday

26

JUNE						
S	M	T	W	T	F	S
				1	2	3 4
5	6	7	8	9	10	11
12	13	14	15	16	17	18
19	20	21	22	23	24	25
26	27	28	29	30		

July

Sun	Mon	Tue	Wed	Thur	Fri	Sat
					1	2
3	4	5	6	7	8	9
10	11	12	13	14	15	16
17	18	19	20	21	22	23
24	25	26	27	28	29	30
31						

2022

NOTES

June/July

Monday

27

Tuesday

28

Wednesday

29

2022

Thursday

30

Canada Day - University Buildings Closed

Friday

1

Saturday

2

Sunday

3

JULY						
S	M	T	W	T	F	S
					1	2
3	4	5	6	7	8	9
10	11	12	13	14	15	16
17	18	19	20	21	22	23
24	25	26	27	28	29	30
31						

July

Monday

4

Tuesday

5

Wednesday

6

2022

Thursday

7

Friday

8

Saturday

9

Sunday

10

July						
S	M	T	W	T	F	S
					1	2
3	4	5	6	7	8	9
10	11	12	13	14	15	16
17	18	19	20	21	22	23
24	25	26	27	28	29	30
31						

July

Monday

11

Tuesday

12

Wednesday

13

2022

Thursday

14

Friday

15

Saturday

16

Sunday

17

JULY						
S	M	T	W	T	F	S
					1	2
3	4	5	6	7	8	9
10	11	12	13	14	15	16
17	18	19	20	21	22	23
24	25	26	27	28	29	30
31						

July

Monday
18

GSA Council Meeting - 6 pm

Tuesday
19

Wednesday
20

2022

Thursday

21

Friday

22

Saturday

23

Sunday

24

JULY						
S	M	T	W	T	F	S
						1 2
3	4	5	6	7	8	9
10	11	12	13	14	15	16
17	18	19	20	21	22	23
24	25	26	27	28	29	30
						31

July

Monday

25

Tuesday

26

Wednesday

27

2022

Thursday

28

Friday

29

Saturday

30

Sunday

31

JULY						
S	M	T	W	T	F	S
					1	2
3	4	5	6	7	8	9
10	11	12	13	14	15	16
17	18	19	20	21	22	23
24	25	26	27	28	29	30
						31

August

Sun	Mon	Tue	Wed	Thur	Fri	Sat
	1	2	3	4	5	6
7	8	9	10	11	12	13
14	15	16	17	18	19	20
21	22	23	24	25	26	27
28	29	30	31			

2022

NOTES

August

Monday

1

Heritage Day - University Buildings Closed

Tuesday

2

Wednesday

3

2022

Thursday

4

Friday

5

Saturday

6

Sunday

7

AUGUST						
S	M	T	W	T	F	S
		1	2	3	4	5 6
7	8	9	10	11	12	13
14	15	16	17	18	19	20
21	22	23	24	25	26	27
28	29	30	31			

August

Monday

8

Tuesday

9

Wednesday

10

2022

Thursday

11

Friday

12

Saturday

13

Sunday

14

AUGUST						
S	M	T	W	T	F	S
		1	2	3	4	5 6
7	8	9	10	11	12	13
14	15	16	17	18	19	20
21	22	23	24	25	26	27
28	29	30	31			

August

Monday

15

GSA Council Meeting - 6 pm

Tuesday

16

Wednesday

17

2022

Thursday

18

Friday

19

Saturday

20

Sunday

21

AUGUST						
S	M	T	W	T	F	S
		1	2	3	4	5 6
7	8	9	10	11	12	13
14	15	16	17	18	19	20
21	22	23	24	25	26	27
28	29	30	31			

August

Monday

22

Tuesday

23

Wednesday

24

2022

Thursday

25

Friday

26

Saturday

27

Sunday

28

AUGUST						
S	M	T	W	T	F	S
		1	2	3	4	5 6
7	8	9	10	11	12	13
14	15	16	17	18	19	20
21	22	23	24	25	26	27
28	29	30	31			

August

Monday

29

Tuesday

30

Wednesday

31

NOTES

September

Sun	Mon	Tue	Wed	Thur	Fri	Sat
				1	2	3
4	5	6	7	8	9	10
11	12	13	14	15	16	17
18	19	20	21	22	23	24
25	26	27	28	29	30	

2022

NOTES

NOTES

The GSA also communicates important information including GSA dates and deadlines, changes to services, committee vacancies, elections, and other announcements via Facebook, Twitter, Instagram, and our newsletter listserv. All graduate students are included on this listserv unless they choose to unsubscribe. If you have unsubscribed and wish to receive the newsletter again, please email gsa.communications@ualberta.ca to be added.

Cover Image: Viola-Ness, CC BY-SA 4.0 <<https://creativecommons.org/licenses/by-sa/4.0/>>, via Wikimedia Commons

JANUARY 2021						
S	M	T	W	T	F	S
					1	2
3	4	5	6	7	8	9
10	11	12	13	14	15	16
17	18	19	20	21	22	23
24	25	26	27	28	29	30
31						

FEBRUARY 2021						
S	M	T	W	T	F	S
		1	2	3	4	5
6	7	8	9	10	11	12
13	14	15	16	17	18	19
20	21	22	23	24	25	26
27	28					

MARCH 2021						
S	M	T	W	T	F	S
		1	2	3	4	5
6	7	8	9	10	11	12
13	14	15	16	17	18	19
20	21	22	23	24	25	26
27	28	29	30	31		

APRIL 2021						
S	M	T	W	T	F	S
				1	2	3
4	5	6	7	8	9	10
11	12	13	14	15	16	17
18	19	20	21	22	23	24
25	26	27	28	29	30	

MAY 2021						
S	M	T	W	T	F	S
						1
2	3	4	5	6	7	8
9	10	11	12	13	14	15
16	17	18	19	20	21	22
23	24	25	26	27	28	29
30	31					

JUNE 2021						
S	M	T	W	T	F	S
		1	2	3	4	5
6	7	8	9	10	11	12
13	14	15	16	17	18	19
20	21	22	23	24	25	26
27	28	29	30			

JULY 2021						
S	M	T	W	T	F	S
				1	2	3
4	5	6	7	8	9	10
11	12	13	14	15	16	17
18	19	20	21	22	23	24
25	26	27	28	29	30	31

AUGUST 2021						
S	M	T	W	T	F	S
		1	2	3	4	5
6	7	8	9	10	11	12
13	14	15	16	17	18	19
20	21	22	23	24	25	26
27	28	29	30	31		

SEPTEMBER 2021						
S	M	T	W	T	F	S
				1	2	3
4	5	6	7	8	9	10
11	12	13	14	15	16	17
18	19	20	21	22	23	24
25	26	27	28	29	30	

OCTOBER 2021						
S	M	T	W	T	F	S
					1	2
3	4	5	6	7	8	9
10	11	12	13	14	15	16
17	18	19	20	21	22	23
24	25	26	27	28	29	30
31						

NOVEMBER 2021						
S	M	T	W	T	F	S
		1	2	3	4	5
6	7	8	9	10	11	12
13	14	15	16	17	18	19
20	21	22	23	24	25	26
27	28	29	30			

DECEMBER 2021						
S	M	T	W	T	F	S
				1	2	3
4	5	6	7	8	9	10
11	12	13	14	15	16	17
18	19	20	21	22	23	24
25	26	27	28	29	30	31

2021

JANUARY 2022						
S	M	T	W	T	F	S
						1
2	3	4	5	6	7	8
9	10	11	12	13	14	15
16	17	18	19	20	21	22
23	24	25	26	27	28	29
30	31					

FEBRUARY 2022						
S	M	T	W	T	F	S
		1	2	3	4	5
6	7	8	9	10	11	12
13	14	15	16	17	18	19
20	21	22	23	24	25	26
27	28					

MARCH 2022						
S	M	T	W	T	F	S
		1	2	3	4	5
6	7	8	9	10	11	12
13	14	15	16	17	18	19
20	21	22	23	24	25	26
27	28	29	30	31		

APRIL 2022						
S	M	T	W	T	F	S
				1	2	
3	4	5	6	7	8	9
10	11	12	13	14	15	16
17	18	19	20	21	22	23
24	25	26	27	28	29	30

MAY 2022						
S	M	T	W	T	F	S
1	2	3	4	5	6	7
8	9	10	11	12	13	14
15	16	17	18	19	20	21
22	23	24	25	26	27	28
29	30	31				

JUNE 2022						
S	M	T	W	T	F	S
				1	2	3
4	5	6	7	8	9	10
11	12	13	14	15	16	17
18	19	20	21	22	23	24
25	26	27	28	29	30	

JULY 2022						
S	M	T	W	T	F	S
					1	2
3	4	5	6	7	8	9
10	11	12	13	14	15	16
17	18	19	20	21	22	23
24	25	26	27	28	29	30
31						

AUGUST 2022						
S	M	T	W	T	F	S
		1	2	3	4	5
6	7	8	9	10	11	12
13	14	15	16	17	18	19
20	21	22	23	24	25	26
27	28	29	30	31		

SEPTEMBER 2022						
S	M	T	W	T	F	S
					1	2
3	4	5	6	7	8	9
10	11	12	13	14	15	16
17	18	19	20	21	22	23
24	25	26	27	28	29	30

OCTOBER 2022						
S	M	T	W	T	F	S
						1
2	3	4	5	6	7	8
9	10	11	12	13	14	15
16	17	18	19	20	21	22
23	24	25	26	27	28	29
30	31					

NOVEMBER 2022						
S	M	T	W	T	F	S
		1	2	3	4	5
6	7	8	9	10	11	12
13	14	15	16	17	18	19
20	21	22	23	24	25	26
27	28	29	30			

DECEMBER 2022						
S	M	T	W	T	F	S
					1	2
3	4	5	6	7	8	9
10	11	12	13	14	15	16
17	18	19	20	21	22	23
24	25	26	27	28	29	30
31						

2022