



APPENDIX XX

LONG RANGE DEVELOPMENT PLAN

NORTH CAMPUS AMENDMENT

MARCH 2014



REPLACES SECTION 6.1 IN THE LONG RANGE DEVELOPMENT PLAN 2002

CONTENTS

6.0	BUILDING FROM THE 2002 LRDP AND VARIOUS SECTOR PLAN DEVELOPMENT	3
6.1.1	LAND USE	5
6.1.2	CAMPUS LIFE AND HOUSING	7
6.1.3	OPEN SPACE SYSTEM	9
6.1.4	PUBLIC VEHICULAR TRANSPORTATION SYSTEMS / PARKING	11
6.1.5	PEDESTRIAN AND BICYCLE CIRCULATION	13
6.1.6	COMMUNITY CONSULTATION PROCESS	14
6.1.7	CONSULTATION SUMMARY	18
6.1.8	UNIVERSITY OF ALBERTA RESPONSES TO COMMUNITY FEEDBACK	24

WHAT IS A LONG RANGE DEVELOPMENT PLAN (LRDP)?

The Long Range Development Plan (LRDP) is responsive to the University of Alberta's Academic Plan, Strategic Research Plan and Strategic Business Plan. It is, therefore, a flexible document rather than a rigid template or "master plan" and it will need amendment when substantial alterations are made in the university's guiding plans.

The LRDP identifies a set of strategic planning principles that should form the basis for achievement of the goals, objectives and strategies expressed in the academic, research and business plans. It identifies as well, how the university lands and facilities should be developed in response to these plans, and outlines the operational planning initiatives and guidelines that will direct development.

The LRDP is the overall organizing framework for development and is approved by the Board of Governors as the guiding document for physical planning. The university will develop detailed administrative plans for various geographic sectors in conjunction with the timing of development in these sectors.

WHY IS THE LONG RANGE DEVELOPMENT PLAN NEEDED?

The university has always maintained a sufficient land base to meet its development requirements. However, from time to time, it is necessary to review the ways in which development of those lands is planned.

With growth continuing at the university and with higher rates of growth anticipated, continued facilities growth requires a useful framework within which to deploy physical assets effectively, efficiently and in a timely manner in response to academic and research priorities.

6.0 BUILDING FROM THE 2002 LRDP AND VARIOUS SECTOR PLAN DEVELOPMENT

- The University of Alberta's students, faculty and staff, along with neighbouring communities and other stakeholders, have expressed interest in the principles of smart growth and planned communities. This LRDP amendment reinforces these principles.
- The 2002 LRDP planning principles have laid the foundation for guiding further planning and development of University of Alberta campuses.
- The amended North Campus LRDP document will include changes to sections 6 and 7 of the 2002 document:
 - North Campus will continue to be the urban campus site of the university. This will create one of the most densely populated campuses in Canada, accommodating approximately 37,000 students on 230 acres.
 - North Campus will be the primary campus of the university for the next 30 years and will be the hub for a majority of the university's faculties and facilities.
- The land use and campus element plans for the North Campus reflect the strategic planning principles of the 2002 LRDP. The subsequent illustrative series of plans captures physical systems and elements that require supervision and management. This section offers system-specific initiatives and guidelines appropriate to those systems.

6.01 SMART GROWTH PRINCIPLES

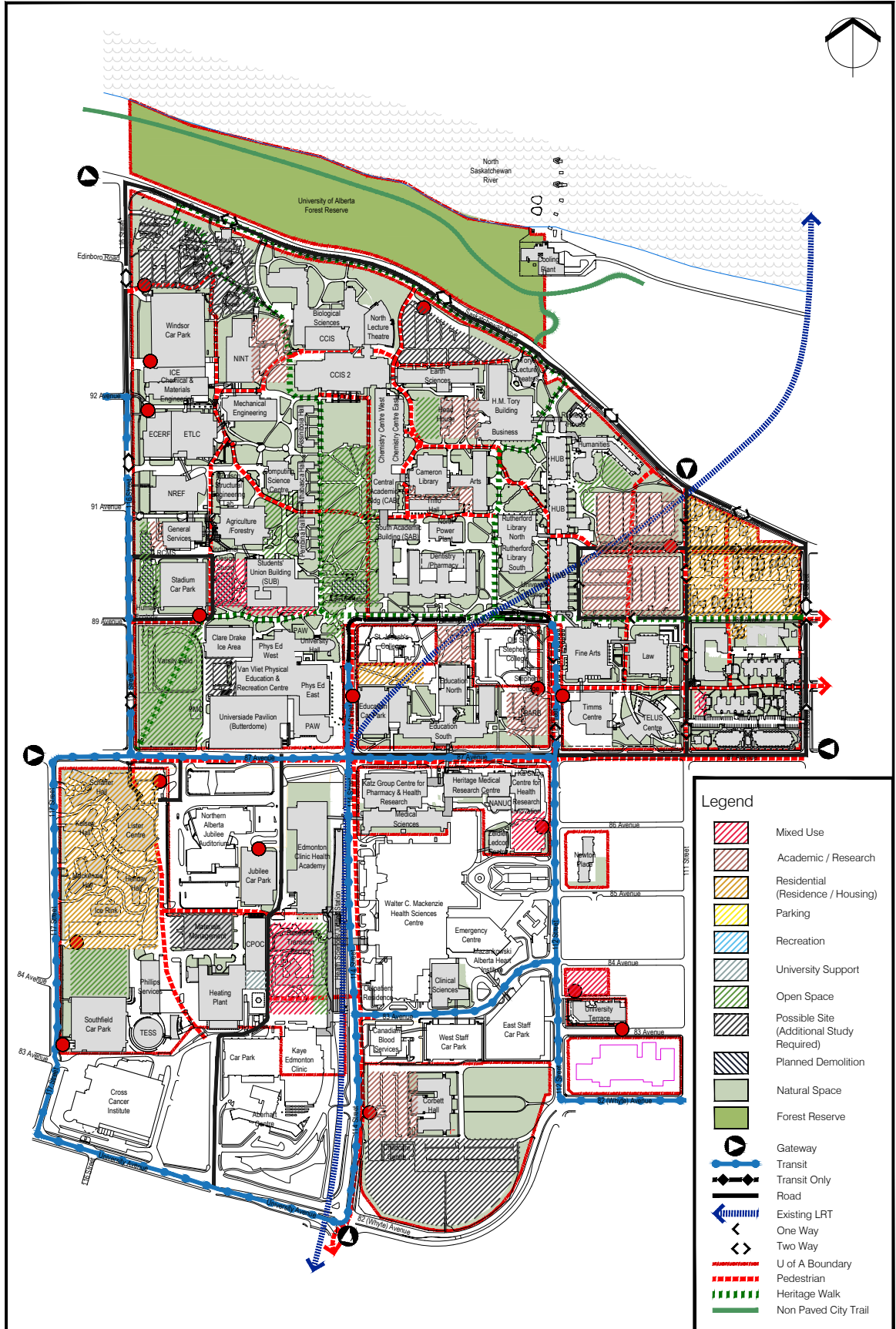
- Pursue a healthy and sustainable campus
- Realize operational, academic and social benefits to the university and surrounding communities
- Promote greater connections and communication with the surrounding community
- Create lasting, meaningful and accessible places
- Promote a pedestrian-oriented campus to the extent possible, while maintaining barrier-free access and services to various facilities
- Promote smart growth with each phase of campus development

6.02 PLANNED COMMUNITY PRINCIPLES

Our campuses will embody and balance social, ecological and economic sustainability in every aspect of campus design and function by:

- Enhancing and building upon the existing sustainability and resource stewardship philosophy of the U of A by balancing the three spheres of sustainability: social, economic and environmental;
- Creating an academic and residential environment that fosters the energetic exchange of ideas and creates a unique sense of place;
- Promoting opportunities for all U of A campuses to act as living laboratories, utilizing the site for the testing and integration of urban design innovations;
- Providing strong connections with neighbouring communities, allowing for shared amenities and services;
- Supporting and advancing the university's goal of becoming one of the world's top public educational institutions; and
- Making optimal use of the university's budgetary resources and partnership funding.

EXHIBIT 6.1.1
LAND USE
NORTH CAMPUS



6.1.1 LAND USE

The University of Alberta has been a successful post-secondary teaching, learning and research institution since its founding in 1908. Its North Campus has remained in continuous development, use and renewal for more than 100 years to serve its expanding academic mission and vision.

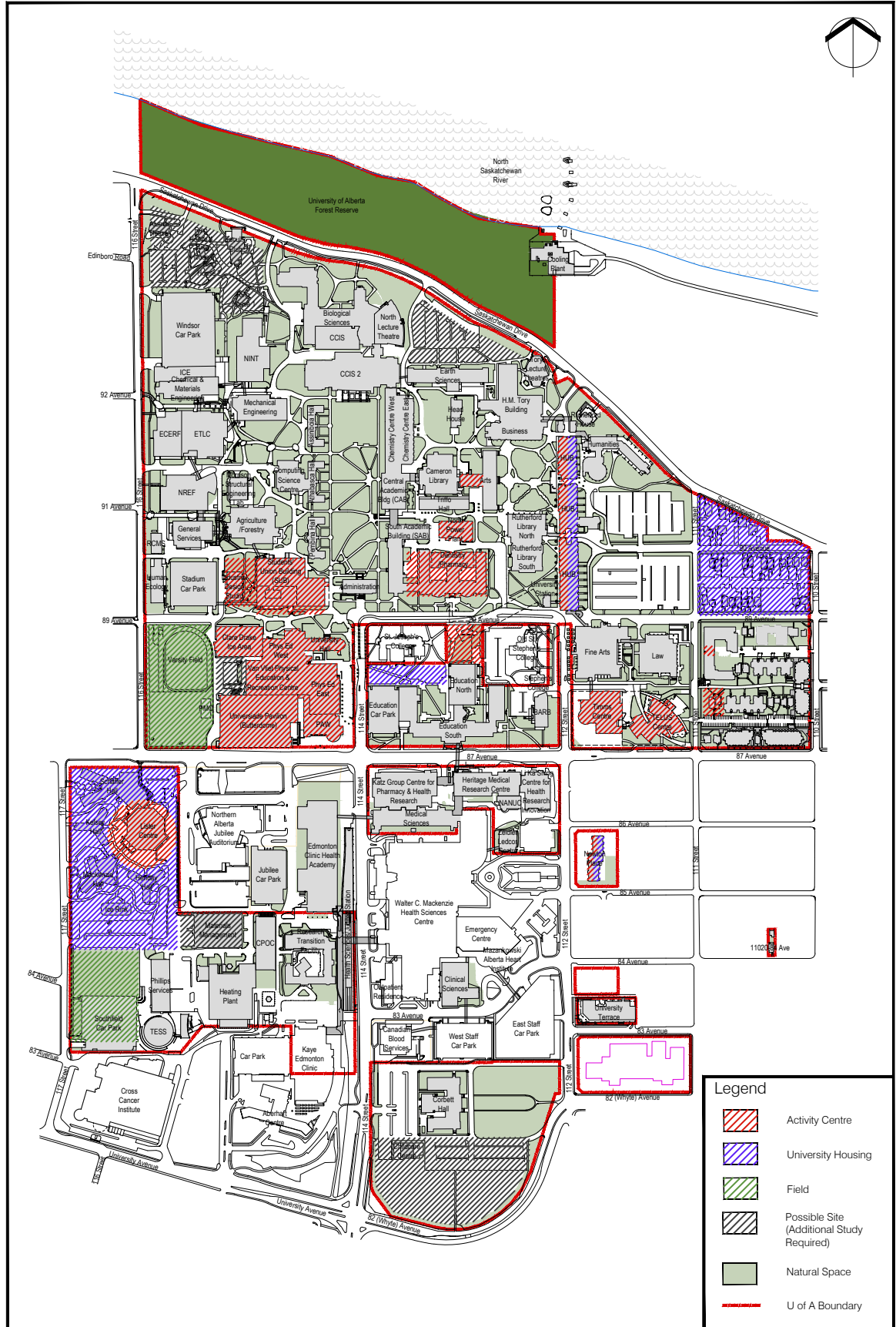
Land use purposes remain consistent and are divided in categories including academic/research, mixed use, residential (residence and housing), parking, recreation, university support, open space, and natural reserve.

To be effective, a land use plan needs to be grounded in sound smart growth and planned community principles. The land use plan also needs to engender resilience in adapting to changing demographics, space needs, functional programs, evolving pedagogy, social and flexible learning space requirements, and also changing mandates and expectations from the Ministry of Innovation and Advanced Education, as well as funding partners and requirements.

The resultant aspiration is a healthy and complete community that adequately provides the necessities of work, play and daily life for its inhabitants and users — a community that locates its various centres of activity in a connected, efficient and logical manner to support a high degree of livability and functionality.

A healthy and complete campus means a mixture of land uses: teaching and research, residential, recreational and service uses, integrated within buildings and across campus properties. It means having a campus where students, faculty and staff can feel at home and provide for their daily campus needs. It also pertains to how North Campus interacts with its surrounding neighbours.

EXHIBIT 6.1.2
CAMPUS LIFE
AND HOUSING,
NORTH CAMPUS



6.1.2 CAMPUS LIFE AND HOUSING

Universities are institutions of purpose and place, established to nurture the development of students. Beyond purpose-built facilities for academic purposes, the connectivity of educational community manifests itself through the campus residential and campus life experience.

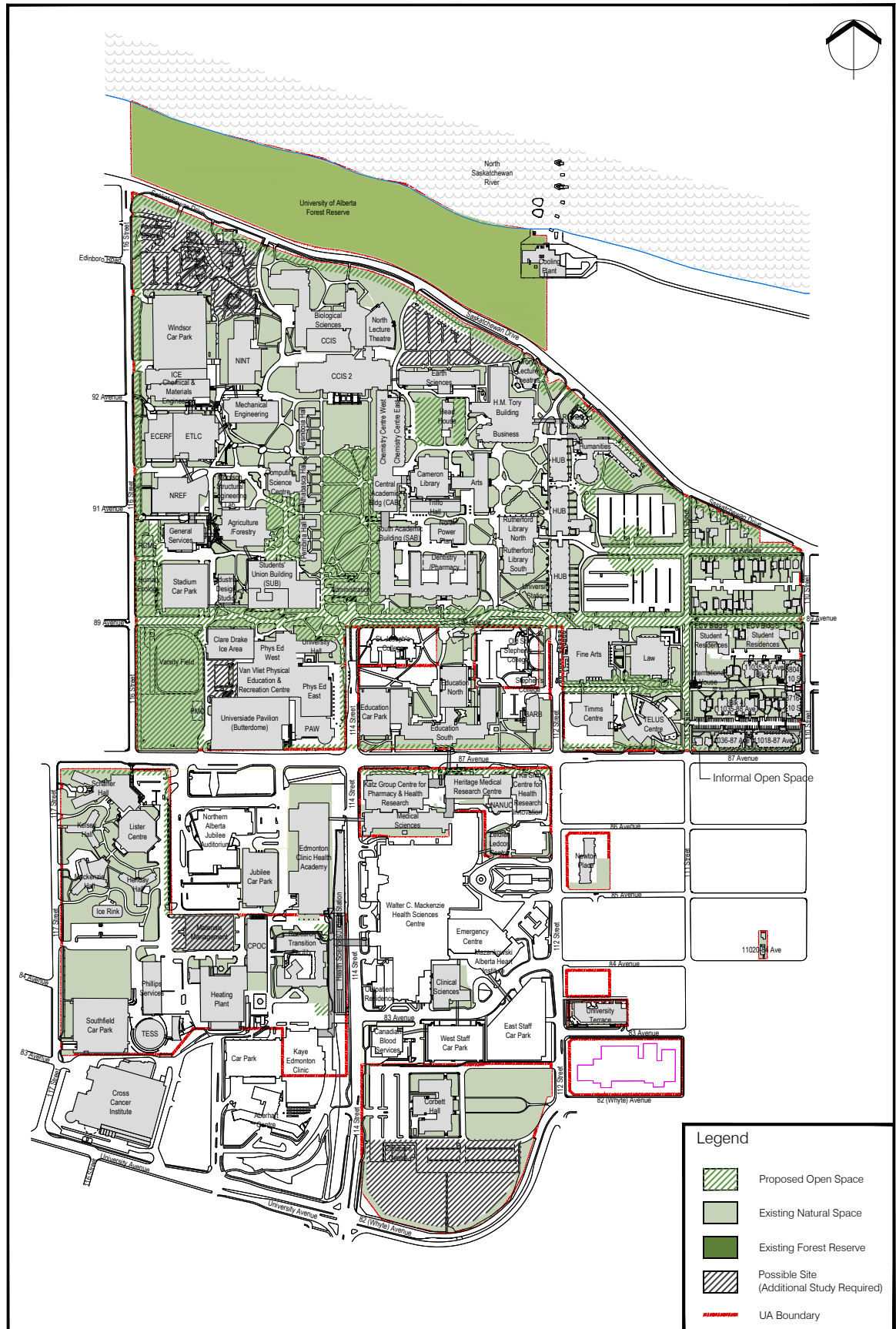
Supported through research and evidence-based design, the concepts of campus life and housing program aspire to “use campus residences to augment, complement, and enrich students’ academic success and experience.” Source: Kuh, G., Kinzie, J., Whitt, E., & Associates (2005). *Student Success in College: Creating Conditions That Matter*.

Good planning for student residences necessitates careful integration with recreation, leisure and student services, as well as neighbouring community resources and amenities. Residences will be planned and designed to function as components of campus neighbourhoods underpinned by sound urban planning and design principles that foster active street life and energize an integrated community, consistent with smart growth principles.

Five primary North Campus residential neighbourhoods are identified: Lister Centre, East Campus Village, HUB Mall, Newton Place and St. Joseph’s. Among the goals of the university will be to ensure sufficient quality student housing for up to 25 per cent of full-time equivalent students.

There are also multiple centres of campus life distributed throughout North Campus. However, a concentrated zone along 87 Avenue and 89 Avenue is being developed to provide a safe and active day and nighttime corridor. This includes Lister Centre, Varsity Field, the Universiade Pavilion, the Van Vliet Centre, the PAW Centre, the Students’ Union Building, the repurposed Dentistry/ Pharmacy Building, the North Power Plant, future Gathering Place, Convocation Hall, HUB Mall, Timms Centre for the Arts, Telus Centre and a future East Campus Village amenities building.

EXHIBIT 6.1.3
OPEN SPACE
SYSTEM,
NORTH CAMPUS



6.1.3 OPEN SPACE SYSTEM

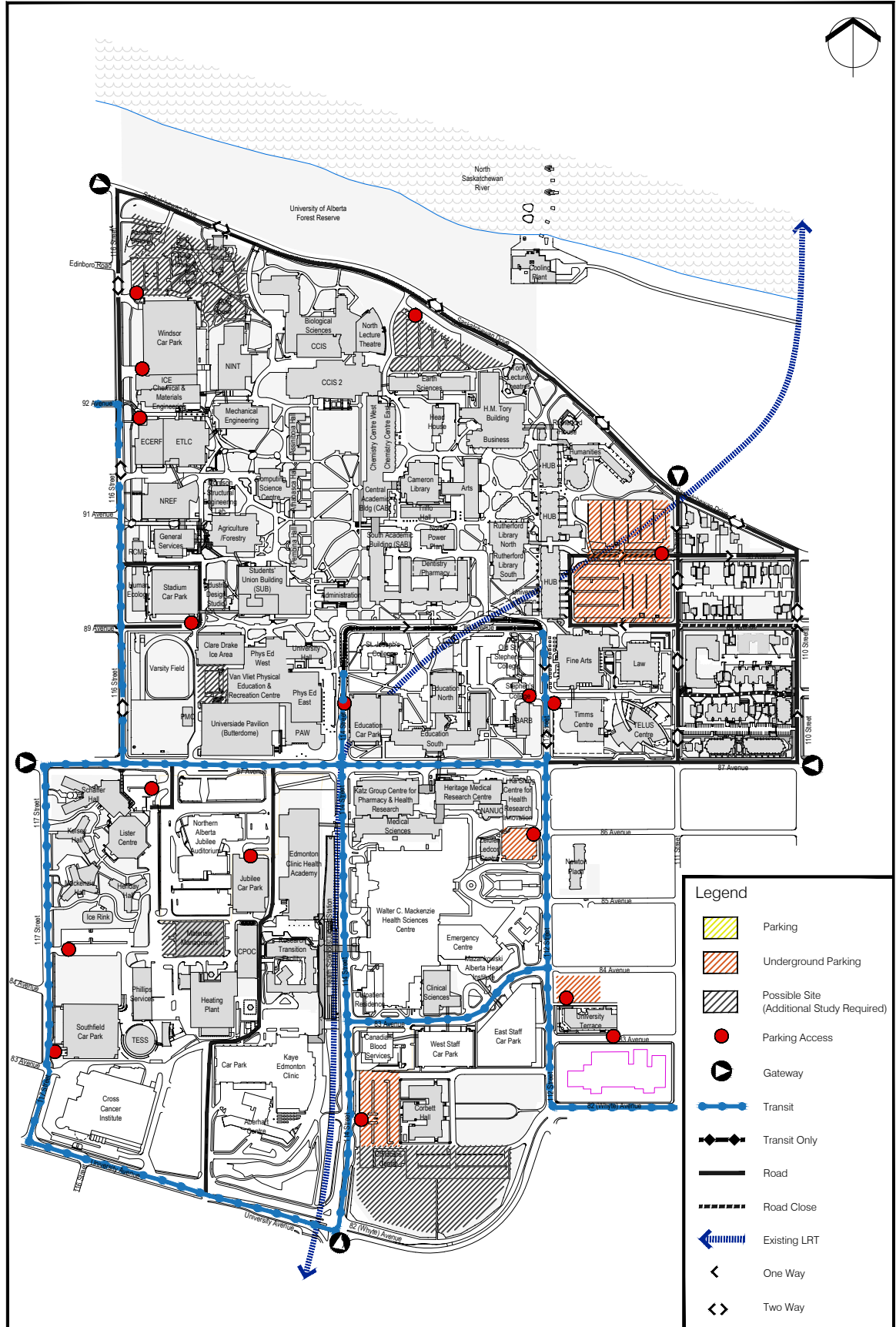
The campus open space system is composed of tree-lined boulevards, walkways, paths, quads, courtyards, commons, plazas, building entries, sculptures, art, commemorative plaques, lights and various landscape features in addition to open fields and active recreation areas. Together, it is a medium that connects individuals to the present and past experiences and achievements of the university in the social, historical and emotional realms.

The campus open space system is the connectivity system for the entire university campus by balancing increased density, improving livability and reinforcing a sense of community. It underpins and supports the public realm where campus life, activities, rituals and celebrations of the institution occur. In addition, it provides the necessary circulation movement, air, natural light, cultural and natural landscapes, contributing to the health and wellness of the university's physical space. Its physicality, geographic spatial breadth, connection to the history, legacy and community building give the campus a complexity of meaning, a sense of place and identity unique to this campus.

Campus open space demonstrates the university's commitment to environmental stewardship and support of the City of Edmonton's WinterCity Strategy, as well as smart growth principles of developing and building a healthy community for our campus, neighbouring communities and the general public.

On the experiential dimension, a well-developed campus open space system extends gestures of hospitality and welcome to greet its occupants, new recruits and returning alumni. As such, the articulation, preservation, development and integration of various open spaces into a coherent campus to support formal and informal place-making activities are the ultimate aspirations of a campus open space system.

EXHIBIT 6.1.4
PUBLIC
VEHICULAR
TRANSPORTATION
SYSTEMS /
PARKING



6.1.4 PUBLIC VEHICULAR TRANSPORTATION SYSTEMS / PARKING

Campus planning for public vehicular transportation systems and parking requires balancing factors such as costs, convenience, infrastructural provisions by the Capital Region Municipalities for public transit systems, the number of students living in residences or within walking distance to the campus, commuters and visitors, and service vehicles.

Managing transportation and parking on campus remains an ongoing challenge. Progressive changes over the past decade have included the introduction of U-Passes for all students, increased staff usage of LRT between campuses, and other transportation demand management (TDM) initiatives. Recent university data show a marked decrease in parking demand, which supports a reduction in our total parking requirements. The gradual progress towards our target of providing on-campus housing of 25 per cent of our full-time enrolment population has also influenced the decline in vehicular access to North Campus.

Private vehicular access continues to be restricted to the periphery of the campus, where parking structures will be located along these access routes over time. Surface parking lots will be converted to underground parking with future development where feasible. In alignment with smart growth principles, TDM studies will be refreshed as required to examine the traffic flows and volumes coming in and out of North Campus.

The overall aspiration for transportation planning is to create an integrated transportation system that emphasizes non-vehicular movement, manages vehicular access, maximizes public transit use and minimizes the impact of traffic on neighbouring communities.

6.1.5 PEDESTRIAN AND BICYCLE CIRCULATION

The LRDP amendment maintains and augments the pedestrian and bicycle circulation system of the North Campus. It promotes an integrated approach to enhance pedestrian and bicycle routes to improve intra-campus movement and external access to the campus. These pathways are part of a larger open space strategy to connect surrounding neighbours.

The existing access and circulation structure consists of vehicular, pedestrian, transit and parking elements. Although the university is generally well served by these elements, their overall organization and pattern will be improved to promote a unified connected system. Creating pedestrian/bicycle friendly precincts, where use of vehicles is restricted, allows people to move comfortably about the campus. Generally, there is a need to refine the integration of the network, improve safety, make it easier to move on campus and provide better wayfinding.

This network provides access from campus gateways and entrances, peripheral parking lots and transit locations to all areas of the campus. Working closely with the City of Edmonton, the university is providing shared-use network routes for both pedestrians and bicyclists.

The development of pedways will be encouraged to connect buildings and to provide safe passage over busy streets.

North Campus will be linked to community pedestrian and bicycle systems, and co-ordinated with City of Edmonton systems to promote increased participation and safer use.

Within East Campus Village, two-way traffic on Saskatchewan Drive between 111 Street and 110 Street and on 110 Street between 89 Avenue and 90 Avenue will be discussed with the City of Edmonton. Adjustments would be required to existing bicycle lanes.

Existing pedestrian spines will be extended and a hierarchy of pedestrian walkways will be developed to improve circulation and wayfinding.

6.1.6 COMMUNITY CONSULTATION PROCESS

6.1.6.1 HOW DID WE GET TO THE AMENDMENT?

The U of A follows the *Post-secondary Learning Act*, which outlines the consultation process required for an amendment for the LRDP. The university also follows a consultation protocol outlined in Appendix 18 of the LRDP, which was submitted to the Minister in 2004. An overview of community engagement and how the U of A fulfilled the consultation requirements outlined in Appendix 18 is provided below.

6.1.6.2 WHAT STEPS WERE TAKEN TO GET TO THE AMENDMENT?

The U of A has been consulting with the North Campus communities of Windsor Park, Garneau and McKernan since 2001. It is important to note that the community of McKernan has been significantly more involved in the consultation process for South Campus but has been invited to attend the North Campus LRDP Amendment focus groups and open houses.

6.1.6.3 A CHRONOLOGY OF THE CONSULTATIONS

During the LRDP development, numerous consultative opportunities occurred between 2001 and 2002:

- Three community workshops:
 - September 12, 2001, November 20, 2001, and February 4, 2002
- Five open houses:
 - September 26, 2001, and two on October 4, 2001 – first LRDP open houses
 - November 27, 2001 – second LRDP open house
 - February 25, 2002 – third LRDP open house
- Nine meetings where the LRDP was discussed at length
 - Eight University of Alberta Community Committee (UACC) meetings
 - One Garneau community meeting

After the LRDP consultation process, the U of A began to meet with the Garneau Community League representatives to discuss specific issues related to the LRDP that affected their community.

- December 2003 – University distributed *Historical and Architectural Assessment of the Houses in East Campus Village, University of Alberta*
- February 4, 2004 – University held an open house to review planning for sectors 3, 4 and 8
- May 20, 2004 – Garneau community representatives and the U of A met to discuss outcomes of February 4, 2004 open house

In 2005 the university and the Garneau Community League agreed to conduct facilitated community dialogues, which then resulted in the creation of the Design Guidelines for Infill Development.

- Twelve community dialogues occurred between March 2005 and September 2008
 - March 12, 2005 – Garneau/U of A community dialogue meeting – led by a facilitator
 - November 5, 2005 – Garneau/U of A community dialogue – led by a facilitator
 - January 17, 2006 – community dialogue – Design Working Group meeting
 - January 19, 2006 – community dialogue – Reuse Working Group meeting
 - February 15, 2006 – community dialogue – Design Working Group meeting
 - April 25, 2006 – community dialogue – Design Working Group meeting
 - May 2, 2006 – community dialogue – Reuse Working Group meeting
 - May 27, 2006 – community dialogue
 - January 27, 2007 – community dialogue
 - April 21, 2007 – community dialogue
 - September 22, 2007 – community dialogue
 - September 30, 2008 – community dialogue

Since the completion of the U of A and Garneau community dialogues, the university has met with representatives from Garneau to discuss sectors 7 and 8 and project-specific topics such as the development of graduate residences in East Campus Village in 2009 and 2012. The final results of the community dialogues resulted in input to the open house materials.

- February 10 and June 25, 2009 – East Campus Village dialogues
- August 5, 2009 – East Campus Village open house
- January 27, 2010 – East Campus Village project update with Garneau community
- August 24, 2010 – tour of East Campus Village graduate residences
- June 27 and November 21, 2011, and January 10, 2012 - Three dialogues on sectors 7 and 8
- March 19, 2012 – Sector 7 and 8 open house
- April 3, 2012, April 16, 2012, and April 26, 2012 – Three meetings to discuss the East Campus Village project
- August 16, 2012 – East Campus Village project open house
- September 12, 2012 – meeting to update Garneau UACC representatives on East Campus Village project (community representatives did not attend)
- August 22, 2013 – tour of Tamarack and Pinecrest residences – Two community representatives attended
- September 10, 2013 – Neighbouring communities (Windsor Park, Garneau, McKernan) and representatives for the Students' Union, Graduate Students' Association, NASA, AASUA, and the academic community invited to focus group to review draft material for first open house (for data gathering)
- September 16, 2013 – Garneau focus group attend meeting with U of A staff to review 5-year development plans for East Campus Village
- September 25, 2013 – North Campus Long Range Development Plan Amendment open house
- November 5, 2013 – Neighbouring communities (Windsor Park, Garneau, McKernan) and representatives for the Students' Union, Graduate Students' Association, NASA, AASUA, and the academic community invited to focus group to review material for second North Campus Long Range Development Plan Amendment open house (for proposed amendment)
- November 19, 2013 – North Campus Long Range Plan Amendment open house
- December 3, 2013 – U of A staff met with Students' Union Council for further questions or clarifications on the North Campus Long Range Development Plan Amendment

In addition, after the 2002 LRDP consultation process the U of A began to meet with the Windsor Park Community League representatives to discuss specific development projects.

The U of A also follows a consultation protocol outlined in Appendix 18 of the LRDP. The following are the processes as outlined in Appendix 18 – Long Range Development Planning and Amendments along with a list of actions the U of A has taken to meet all requirements.

6.1.6.4 APPENDIX 18 PROCESSES AND U OF A ACTIONS:

Long Range Development Planning and Amendments

a: When the university undertakes a new Long Range Development Plan, or amends its existing LRDP, owners of land within 60 metres of the university's land and the host municipality will be notified. Such notification will include date, time and location for an information session to present the conceptual plans, or substantive changes, and an invitation to review and comment on the planning, in writing 21 days following the presentation.

U of A action – The U of A mailed letters of notification that contained the date, time and location for an information session (open house) to present substantive changes of the North Campus LRDP Amendment to owners of land within 60 metres of the university's land and host municipality, the City of Edmonton. The open house took place November 19, 2013. The mailing list was identified by the City of Edmonton, Central Area Unit, City Wide Planning Section according to homeowner title information. The letters to residents within 60 metres of the U of A land and the City of Edmonton were mailed to allow a full two-week advance notification period prior to the open house.

b: Notification will take the form of a directed letter to each identified stakeholder in a). The planning document will be available through the communications website of the university.

U of A action – The notification in a) indicated where information for the amendment planning document could be found on the U of A website. Please note additional communication tools were used to advertise the November 19, 2013 open house:

- Portable road signs were placed in four locations from two weeks prior to open house.
- Information about the open house was placed on the U of A's Community Relations website.
- Email invitation sent to City of Edmonton councillor Ben Henderson and Member of Legislative Assembly Steve Young outlining details for the November 19, 2013 open house.

c: Following this presentation and invitation to direct stakeholders, the university shall publish, within a newspaper, newsletter or publication circulating in the areas in which the university's lands are located, notification of the public of its opportunity to review the proposed LRDP, or amendments, and comment upon it (them). The proposed plan/ amendments will be available upon the university's communications website. Comments will be received in writing up to 21 days of the notice.

U of A action – All materials presented and distributed at the November 19, 2013 open house were placed on the U of A website for 21 days (ending December 10, 2013). The U of A published an ad in the *Edmonton Journal* on November 20, 2013, inviting the public to review and comment on the information presented. Portable road signs were placed in four locations for 21 days to remind community members to review and comment on materials from the open house at the Community Relations website.

d: University administration will prepare a summary document that they believe accurately reflects the major concerns and comment expressed. This document will be reviewed by the stakeholders identified in a), and will be modified until agreement is reached on accuracy. During the planning stage, these concerns will be considered.

U of A action – A document that summarized the evaluations received from the November 19, 2013 open house was mailed to stakeholders identified in a) on December 18, 2013, along with a request to provide any further comments to the Office of Community Relations by January 8, 2014. A copy of the summary document was sent to the Office of the University Architect for review and consideration during future planning.

e: Recommendations to the Board of Governors with respect to the LRDP and/ or its amendments will include the consultation summary documents, and a document highlighting how administration has used these comments to develop the LRDP and recommendations.

U of A action – Sections 6.1.7 and 6.1.8 of this appendix include the summary document and a document highlighting how administration has used comments from the November 19, 2013 open house.

f: Upon Board of Governors approval, the LRDP and/or amendments will be sent to the Minister for review and confirmation that the contents of the amendment/LRDP comply with the *Regulations of the Post-secondary Learning Act*.

U of A action – Once the LRDP Amendment is approved by the Board of Governors, the amendment will be sent to the Minister of Innovation and Advanced Education for confirmation.

6.1.7 CONSULTATION SUMMARY

Amendment to Land Use Plan for North Campus

Preliminary Fact Finding Open House –
 presentation of draft amendment material
 Wednesday, September 25, 2013
 Telus Centre Atrium
 111 Street and 87 Avenue

Final Amendment to Land Use Plans for North Campus Open House

Tuesday, November 19, 2013
 Telus Centre Atrium
 111 Street and 87 Avenue

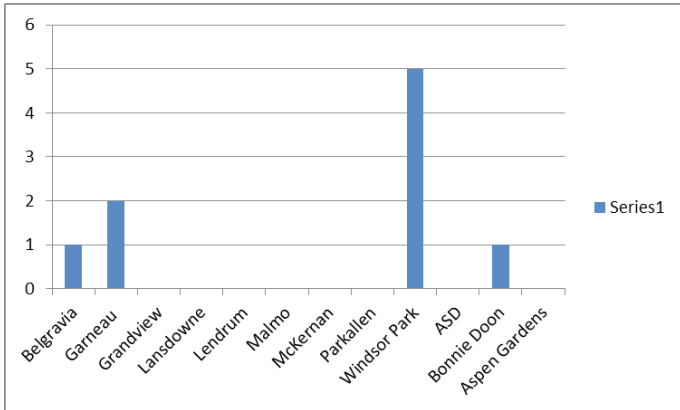
Feedback

September 25, 2013 – 13 evaluations received
 November 19, 2013 – 4 evaluations received

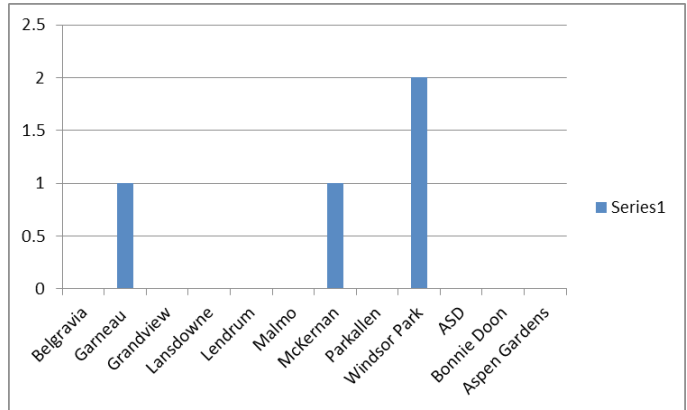
6.1.7.1 QUESTIONS AND EVALUATIONS

1. If you reside in one of the following neighbourhoods please circle that neighbourhood:

September 25, 2013



November 19, 2013



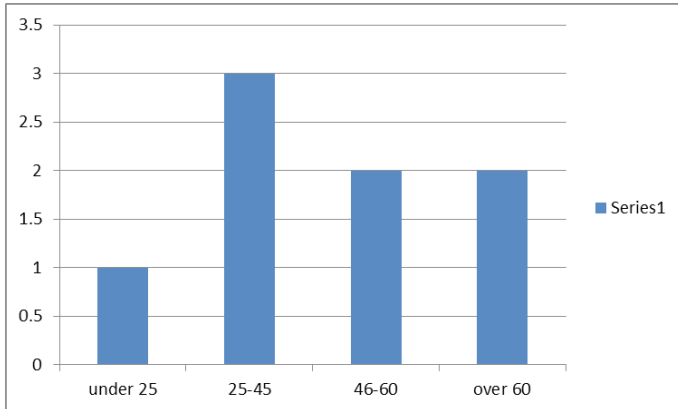
2. If you reside in a different neighbourhood please provide the name of that neighbourhood.

September 25, 2013
 • Tweedle Place

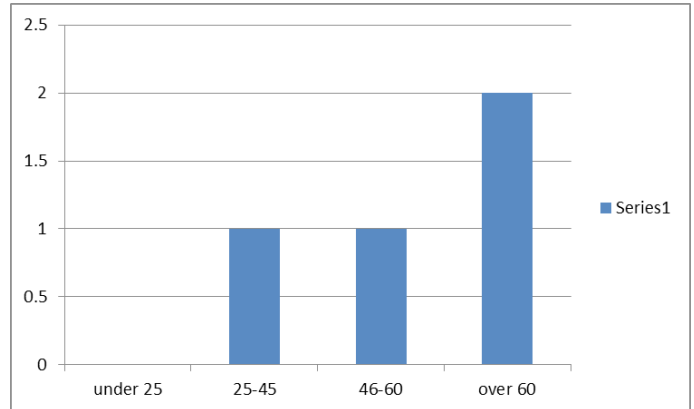
November 19, 2013
 • No responses

3. Please check the age category that you are in.

September 25, 2013

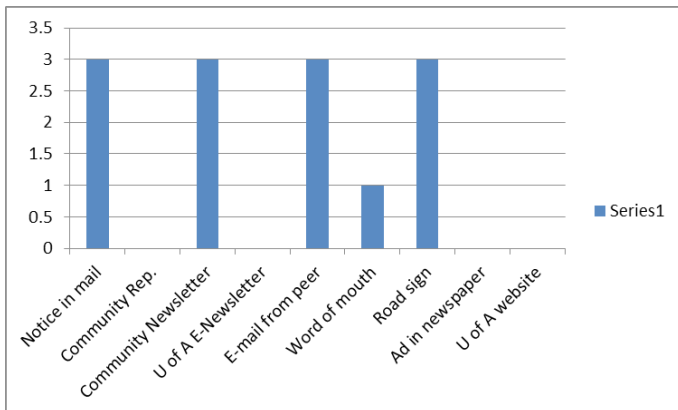


November 19, 2013

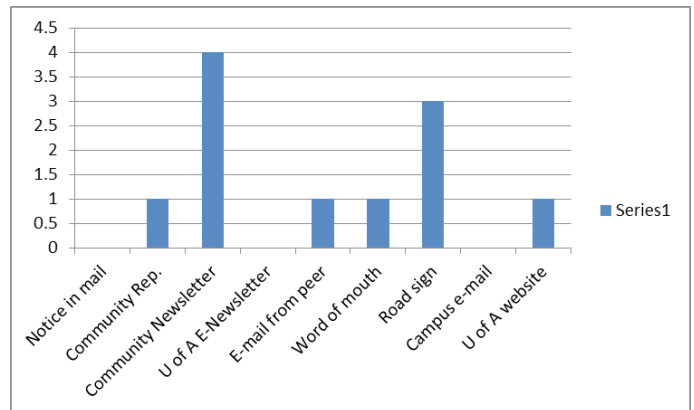


4. How did you hear about this open house?

September 25, 2013

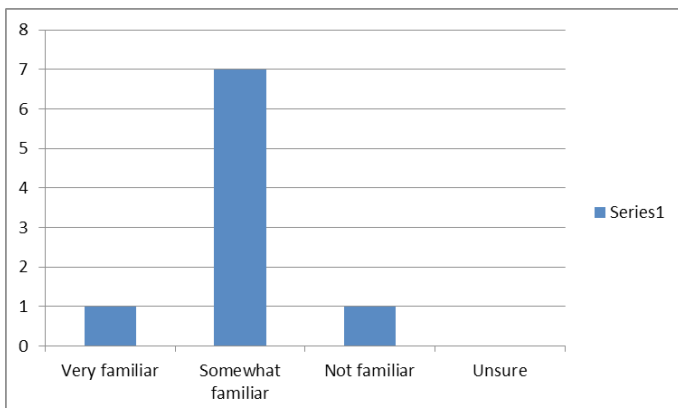


November 19, 2013

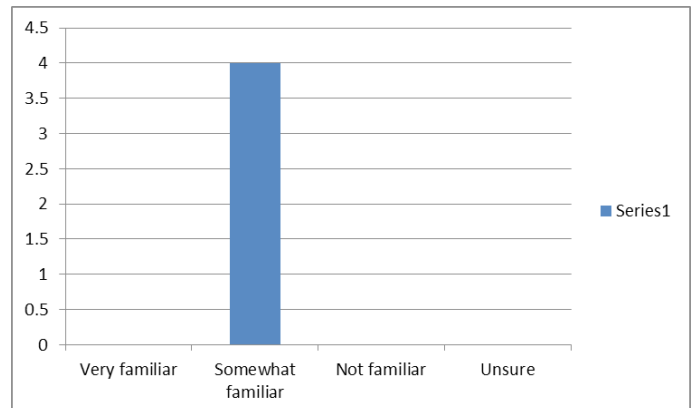


5. Are you familiar with the purpose of the Long Range Development Plan?

September 25, 2013

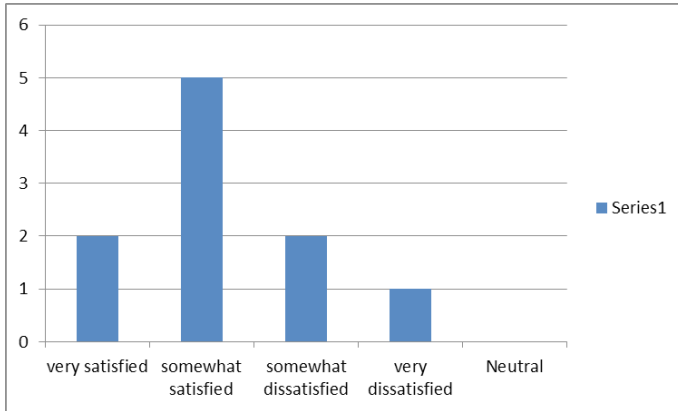


November 19, 2013

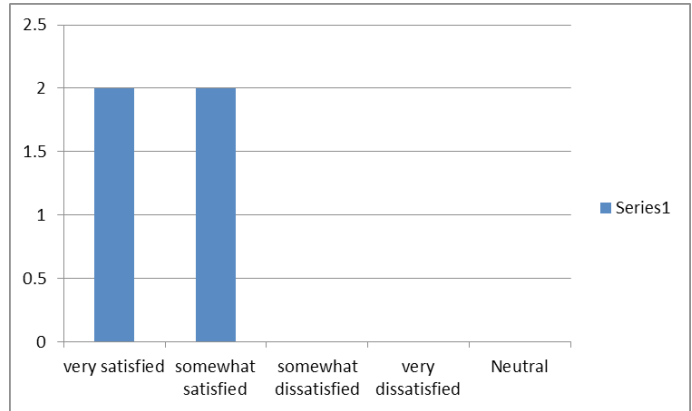


6. Did the material that was presented explain the purpose of the Long Range Development Plan?

September 25, 2013

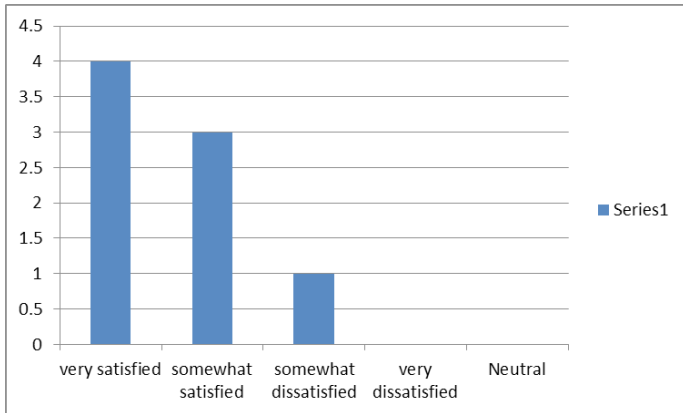


November 19, 2013

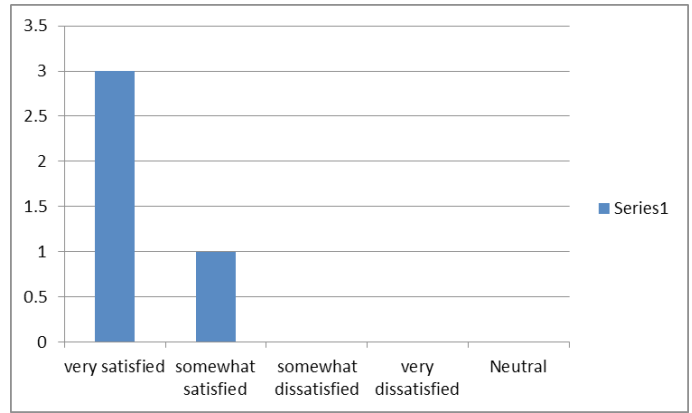


7. Did the material that was presented explain the proposed amendments to the Long Range Development Plan for North Campus?

September 25, 2013

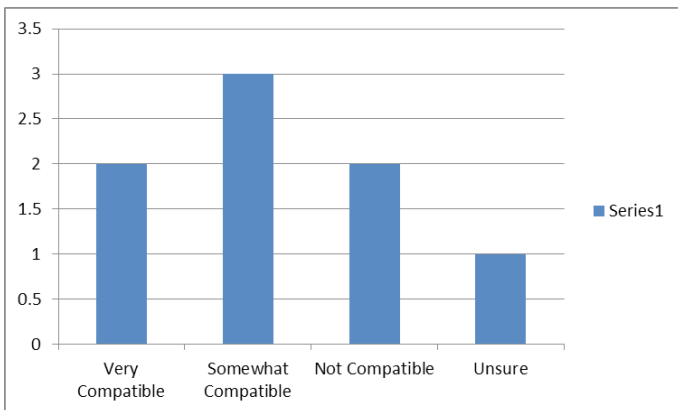


November 19, 2013

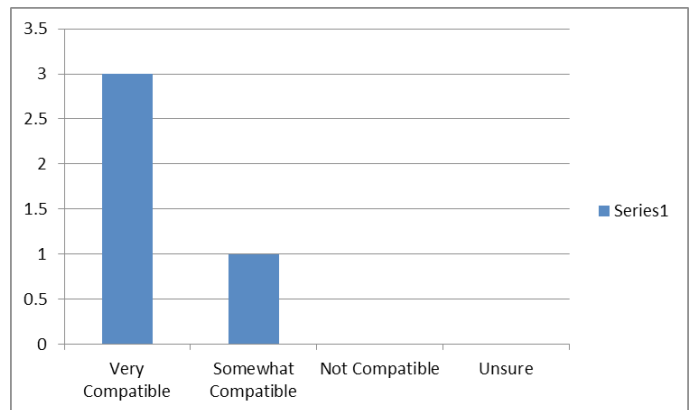


8. How do you see North Campus plans, both the proposed land uses and possible developments, fitting into your community?

September 25, 2013



November 19, 2013



9. Do you have any additional comments to the following planning elements:

September 25, 2013

- Land use – Board #3
 - Campus life and housing – Board #4
 - Open space system – Board #5
 - Public vehicular transportation systems/parking – Board #6
 - Pedestrian and bicycle circulation – Board #7
- Please use plain language on your display boards versus “planning and design definitions” which might not clearly explain what the university plans or may do in each area of development - it is better to be explicit about your plans and intentions so the public can provide direct feedback about this issue.
 - Board 6 As presently proposed we'd be unable to get into our neighbourhood on 89 Ave. (live on the south side of 89th is one-way going east) by only allowing for 2-way to the alley-way for north residents on 89th. Two way needs to be until 89th – 111st should be 2 way all the way to Sask Dr.
 - 3 – Not especially happy to see the ring houses or admin proposed for other uses/demo. W/ regards to admin, I believe quad is a more pleasant space as a closed-in square and the bldg. itself has some architectural value.
 - 4 - excellent to see the removal of the varsity park
 - I did not note anything that struck me as being contentious.
 - “circled the dot beside Pedestrian and bicycle circulation - Board #7 but nothing was written”
 - Board #6: There is a lot of emphasis placed on provision of parking space for private vehicles. Can the University not work to encourage better use of public transit, through for instance a staff u-pass, and reduce some of the need for parking? In addition, during rush/peak hours, campus area is a massive traffic jam - there is nothing in the plans to address this issue.
 - #Board 4 More student housing will diminish quality of life for others, but it's needed. #Board 5 Sad to see open space going. Please don't allow any more vehicles on campus. Those internal gates should stay closed.

November 19, 2013

- Sustainable systems – Board #3
 - Land use – Board #4
 - Campus life and housing – Board #5
 - Open space system – Board #6
 - Public vehicular transportation systems/parking – Board #7
 - Pedestrian and bicycle circulation – Board #8
- Ped'bike - happy with many of the changes esp. 89 Ave travel spine. Continue working with city to improve connectivity. Bike access on 114 from Univ. Ave to 87 Ave is terrible – shared use path on W side is a joke.
 - #3: This board is all motherhood statements and doesn't say anything. Wind turbines? Where? Are more details in the sector plans?
 - #4 – 8: These boards are good. Not to many changes proposed, it seems.

10. Please comment on your impressions regarding the amendment to land use plan for North Campus on 89 Avenue between 110 and 111 Street? Do you have any suggestions for routing into the area that the U of A should consider in co-operation with the City of Edmonton?

September 25, 2013

- Closing 89th to vehicles sounds reasonable, but traffic flow will need to be directed to decrease traffic away from residential areas (other than student housing).
- How will the university ensure that our community on 89th Ave (which has families with small children) will not be ???? with U of A employees trying to get out of the Univ. when traffic is congested?
- Ensure consultation with immediate neighbors/residents.
- This is an excellent idea so long as much more is done to make the space safer for cyclists. The forced routing of cyclists onto the sidewalk in front of the HUB CRT entrance is an accident waiting to happen.
- Don't mind 89 Ave closure or proposed 2 ways on 110 Street but please KEEP parking meters on 100 Street. It is difficult for dinner guests to find parking around here. Keep 100 Street one WAY SOUTH OF 89 Ave.
- In general I have no objections to the land use plan. Overall, the land use plan makes appropriate use of existing undeveloped space and fits the underlying principles adopted for planning in this area. Closing 89 Ave itself should still allow laneway access for residents. Alternative parking may have to be arranged on adjacent street.
- I thought it ok.

November 19, 2013

- I like the idea
- Please provide more details (outside of LRDP consultation) in regards to progress with City of Edmonton re: 110 Street 2-Way. This area has had restricted access for nearly 1 year, may be longer by the time this is done.
- Improvement in optics of the campus.

11. Please tell us the top three (3) topics you would like to have addressed with regard to the amendments to the land use plan for North Campus?

September 25, 2013

a)

- Traffic on the hill past sub - it would be great to see all delivery vehicles rerouted behind hub mall and efforts made to stop student drop off/ pick up and parking on the hill; sidewalks for pedestrian/ bike traffic on either side of the hill would be helpful and prompt ice and snow removal of this area. Currently a sign should be placed at the bottom of the hill redirecting student drop off/pick up away from this area like the sign used by ???.
- Maintaining the historic nature of N. Garneau community by keeping in line w/ its architectural flavor.
- Integration of cycling infrastructure needs to be given greater prominence.
- More detail concerning zone 2 in NW corner of N. campus as this is a possible area of impact for Windsor Park.
- Not sure enough of my positions.

b)

- Varsity Field - I am concerned about the noise and traffic issues that come with hockey players using these facilities during nonworking hours (early AM, late nights) and on campus parking for these players.
- How will noise from the new residences (particularly in the summer) be kept to a minimum?
- More thought given to street level commercial development. This was a missed opportunity w/ ECHA, and the demand most likely exists for expanding non-food court independent dining options in the area. Could also be a source of revenue for the U of A.

c)

- Efforts need to be made to provide parking for students and their visitors when new student residences are constructed on campus; students need to be aware that these new residences will be close to established neighbourhoods that need to be respected.
- Roads damaged by construction vehicles be repaired from both the Grad student house development on 110 St & the new residences on 89th Ave.

November 19, 2013

- Potential uses of Corbett Hall south area (still under discussion).
- Improving bike access into campus.

12. Please provide any other suggestions/concerns/questions about the amendment to the land use plan for North Campus.

September 25, 2013

Themes

- Continue to consult with surrounding neighbours, areas for future study will impact neighbours – consultation will be needed as this goes forward, disruption during construction projects to neighbours is significant – consultation and communication needs to continue.
- Traffic – promote use of transit and not cars, reduce parking spaces, do not expand parking structures.
- North Campus is becoming a crowded cement filled campus and losing its human scale, concerned that once admin building is taken down the Quad will be negatively impacted; the Quad is a special place please plan around it carefully.

November 19, 2013

- Thank you for clarifying things for someone new to all these acronyms.
- The changing student demographic from fewer undergraduates & more graduates was interesting also the changing housing in Lister Hall & going “dry” had impact on behavior of campus residences. Thanks for reaching out to the wider community.
- Although the location of the Faculty Club could change – it’s purpose and grand view should remain.

6.1.8 UNIVERSITY OF ALBERTA RESPONSES TO COMMUNITY FEEDBACK

9. Do you have any additional comments to the following planning elements:

September 25, 2013

- Land use – Board #3
- Campus life and housing – Board #4
- Open space system – Board #5
- Public vehicular transportation systems/parking – Board #6
- Pedestrian and bicycle circulation – Board #7

QUESTIONS & STAKEHOLDER COMMENTS:

- Please use plain language on your display boards versus “planning and design definitions” which might not clearly explain what the university plans or may do in each area of development - it is better to be explicit about your plans and intentions so the public can provide direct feedback about this issue.
- Board 6 As presently proposed we'd be unable to get into our neighbourhood on 89 Ave. (live on the south side of 89th is one-way going east) by only allowing for 2-way to the alley-way for north residents on 89th. Two way needs to be until 89th – 111st should be 2 way all the way to Sask Dr.
- 3 – Not especially happy to see the ring houses or admin proposed for other uses/demo. W/ regards to admin, I believe quad is a more pleasant space as a closed-in square and the bldg. itself has some architectural value.
- 4 - excellent to see the removal of the varsity park
- I did not note anything that struck me as being contentious.
- “circled the dot beside Pedestrian and bicycle circulation - Board #7 but nothing was written”
- Board #6: There is a lot of emphasis placed on provision of parking space for private vehicles. Can the University not work to encourage better use of public transit, through for instance a staff u-pass, and reduce some of the need for parking? In addition, during rush/peak hours, campus area is a massive traffic jam - there is nothing in the plans to address this issue.
- #Board 4 More student housing will diminish quality of life for others, but it's needed. #Board 5 Sad to see open space going. Please don't allow any more vehicles on campus. Those internal gates should stay closed.

UNIVERSITY RESPONSE:

- Both plain language and planning definitions are included in amendment.
- Comment incorporated in final amendment. 111 Street to remain a local street and not a 2-way street through campus.
- Opinion noted.
- No response required.
- Corrected and note added.
- University continues to balance modes of transportation to and from campus, including public transit and construction of parkades for private vehicles. Total parking spaces have been reduced.
- University continues to balance quality of neighbourhood and increased student housing. This includes provision of open spaces and restricting vehicles to peripheral of campus.

November 19, 2013

- Sustainable systems – Board #3
- Land use – Board #4
- Campus life and housing – Board #5
- Open space system – Board #6
- Public vehicular transportation systems/parking – Board #7
- Pedestrian and bicycle circulation – Board #8

QUESTIONS & STAKEHOLDER COMMENTS:

- Ped’bike - happy with many of the changes esp. 89 Ave travel spine. Continue working with city to improve connectivity. Bike access on 114 from Univ. Ave to 87 Ave is terrible – shared use path on W side is a joke.
- #3: This board is all motherhood statements and doesn’t say anything. Wind turbines? Where? Are more details in the sector plans?
- #4 – 8: These boards are good. Not to many changes proposed, it seems.

10. Please comment on your impressions regarding the amendment to land use plan for North Campus on 89 Avenue between 110 and 111 Street? Do you have any suggestions for routing into the area that the U of A should consider in cooperation with the City of Edmonton?

QUESTIONS & STAKEHOLDER COMMENTS:

September 25, 2013

- Closing 89th to vehicles sounds reasonable, but traffic flow will need to be directed to decrease traffic away from residential areas (other than student housing).
- How will the university ensure that our community on 89th Ave (which has families with small children) will not be ??? with U of A employees trying to get out of the Univ. when traffic is congested?
- Ensure consultation with immediate neighbors/residents.
- This is an excellent idea so long as much more is done to make the space safer for cyclists. The forced routing of cyclists onto the sidewalk in front of the HUB CRT entrance is an accident waiting to happen.
- Don’t mind 89 Ave closure or proposed 2 ways on 110 Street but please KEEP parking meters on 100 Street. It is difficult for dinner guests to find parking around here. Keep 100 Street one WAY SOUTH OF 89 Ave.
- In general I have no objections to the land use plan. Overall, the land use plan makes appropriate use of existing undeveloped space and fits the underlying principles adopted for planning in this area. Closing 89 Ave itself should still allow laneway access for residents. Alternative parking may have to be arranged on adjacent street.
- I thought it ok.

UNIVERSITY RESPONSE:

- No response required. Bike access on 114 Street south of 87 Avenue is city’s jurisdiction.
- No response required.
- No response required.

UNIVERSITY RESPONSE:

- Comment incorporated in amendment.
- Comment incorporated in final amendment 110 Street and 89 Avenue remain to local traffic.
- Comment incorporated in amendment.
- Discussions with City of Edmonton will continue to resolve need for transit zone and accommodate pedestrians and bicycle circulation.
- Comment incorporated in amendment.
- No response required.
- No response required.

November 19, 2013

- I like the idea
- Please provide more details (outside of LRDP consultation) in regards to progress with City of Edmonton re: 110 Street 2-Way. This area has had restricted access for nearly 1 year, may be longer by the time this is done.
- Improvement in optics of the campus.
- No response required.
- Community will be engaged on discussion with City of Edmonton. A specific set of meetings will be set up to discuss this project when it proceeds.
- No response required.

11. Please tell us the top three (3) topics you would like to have addressed with regard to the amendments to the land use plan for North Campus?

QUESTIONS & STAKEHOLDER COMMENTS:

September 25, 2013

a)

- Traffic on the hill past sub - it would be great to see all delivery vehicles rerouted behind hub mall and efforts made to stop student drop off/ pick up and parking on the hill; sidewalks for pedestrian/ bike traffic on either side of the hill would be helpful and prompt ice and snow removal of this area. Currently a sign should be placed at the bottom of the hill redirecting student drop off/pick up away from this area like the sign used by ???.
- Maintaining the historic nature of N. Garneau community by keeping in line w/ its architectural flavor.
- Integration of cycling infrastructure needs to be given greater prominence.
- More detail concerning zone 2 in NW corner of N. campus as this is a possible area of impact for Windsor Park.
- Not sure enough of my positions.

b)

- Varsity Field - I am concerned about the noise and traffic issues that come with hockey players using these facilities during nonworking hours (early AM, late nights) and on campus parking for these players.
- How will noise from the new residences (particularly in the summer) be kept to a minimum?
- More thought given to street level commercial development. This was a missed opportunity w/ ECHA, and the demand most likely exists for expanding non-food court independent dining options in the area. Could also be a source of revenue for the U of A.

UNIVERSITY RESPONSE:

- Incorporated in LRDP amendment per expansion of SUB to the west.
- Incorporated into design guidelines.
- Duly noted.
- Noted at LRDP amendment per 'additional study required' where Windsor Park Community will be engaged and consulted.
- No response required.
- LRDP indicates land-use and not operational issues which would be managed to minimize negative impact to neighbourhood communities.
- As above.
- Site development will continue to serve the academic endeavors of the university primarily. Active street level activities will be considered.

c)

- Efforts need to be made to provide parking for students and their visitors when new student residences are constructed on campus; students need to be aware that these new residences will be close to established neighbourhoods that need to be respected.
- Roads damaged by construction vehicles be repaired from both the Grad student house development on 110 St & the new residences on 89th Ave.
- Parking spaces for students and their visitors are provided in Sector 7, west of 111 Street.
- Noted for operations and maintenance department.

November 19, 2013

- Potential uses of Corbett Hall south area (still under discussion).
- Improving bike access into campus.
- Addressed at LRDP amendment per 'additional study required.'
- Bike access into campus is integrated with City of Edmonton route.

12. Please provide any other suggestions/concerns/questions about the amendment to the land use plan for North Campus.

QUESTIONS & STAKEHOLDER COMMENTS:

September 25, 2013

Themes

- Continue to consult with surrounding neighbours, areas for future study will impact neighbours – consultation will be needed as this goes forward, disruption during construction projects to neighbours is significant – consultation and communication needs to continue.
- Traffic – promote use of transit and not cars, reduce parking spaces, do not expand parking structures.
- North Campus is becoming a crowded cement filled campus and losing its human scale, concerned that once admin building is taken down the Quad will be negatively impacted; the Quad is a special place please plan around it carefully.

November 19, 2013

- Thank you for clarifying things for someone new to all these acronyms.
- The changing student demographic from fewer undergraduates & more graduates was interesting also the changing housing in Lister Hall & going "dry" had impact on behavior of campus residences. Thanks for reaching out to the wider community.
- Although the location of the Faculty Club could change – it's purpose and grand view should remain.

UNIVERSITY RESPONSE:

- Noted at LRDP amendment per 'additional study required' where surrounding neighbours will be engaged and consulted.
- Public transit is currently promoted per U-pass for students and staff.
- Open Space System plan includes additional open space once Administration Building demolished.
- No response required.
- No response required.
- No response required.