
Associate Dean (Research & Planning)

January 15, 2013

Steven Dew
ETLC 6-071
steven.dew@ualberta.ca
780-492-0501



Univ. of Alberta Engineering

With acknowledgements

- Amy Dambrowitz, Research Development Officer - kdambrow@ualberta.ca
- Terra Garneau, Research Facilitator (Research Services Office) - t.garneau@ualberta.ca
- Mary-Ellen Compton, Assistant Dean - mary-ellen.compton@ualberta.ca



Roles



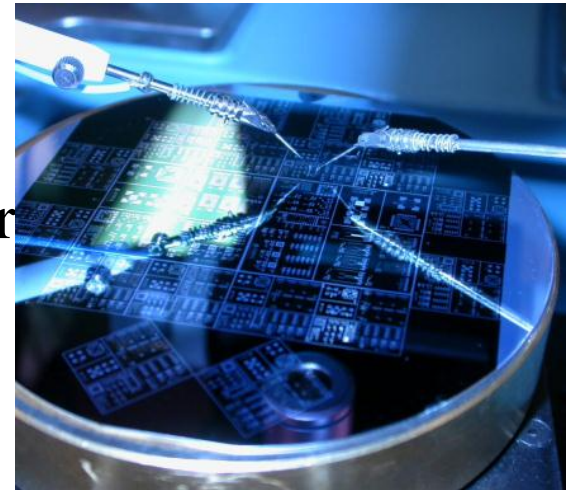
- Research

- Authorizations for grant proposals, agreements, reports of invention
- Point of contact on research programs, policies, facilities
- Connector for external institutions, companies, interdisciplinary
- Faculty rep on institutional programs and awards (CFI, NSERC CREATE, CRC, PCYI, etc.)



Roles

- Research
 - Support for research facilities (INRF, nanoFAB, ACSES)
 - Promotion of Faculty research
 - Development and support for major research initiatives (HAI, CERC, CAIP, Tsinghua, nanoAccelerator, NINT, COSI, C5MPT)
 - Dean's Research Awards (undergrad research)



Roles

- Planning
 - Academic planning (APC, GPC, Calendar)
 - Accreditation, Unit Review
 - Physical planning (FAR)
 - Information technology (TELSAC, IT Plan)
 - Teaching and learning (TLAT, CLE Attributes)
 - NINT administration interface
 - Safety (CSTS)



Roles

- Graduate Students
 - Graduate planning committee (GPC, ENGG 600)
 - FGSR renovation
 - Recruitment strategies
 - Graduate symposium (FEGRS)
- International
 - Institutional policy (SACIE)
 - China policy (CRAC)
 - Visiting delegations
 - Contact for International Relations (UAI)
 - Sponsored students



Resources

- **Grant signature page (RSO Forms Cabinet)**
http://www.rso.ualberta.ca/en/~media/University%20of%20Alberta/Administration/Research/Research%20Services%20Office/Forms/form_supplementary_signature_page.pdf
- **Grant agreement FAQ (overhead, student involvement)**
<http://www.rso.ualberta.ca/Negotiating.aspx>
- **Research Policies (human research ethics)**
<http://www.rso.ualberta.ca/PoliciesProcedures.aspx>
- **Report of invention form (TEC Edmonton)**
<http://www.tecedmonton.com/TechnologyManagement/UofAReportofInventionProcess/tabid/135/Default.aspx>
- **CFI Leaders Opportunity Fund (RSO Process)**
<http://www.rso.ualberta.ca/Applying/SponsorsPrograms/CFI/LOF.aspx>
- **NSERC**
http://www.nserc-crsng.gc.ca/Professors-Professeurs/Index_eng.asp
- **Alberta Innovates – Technology Futures**
<http://www.albertatechfutures.ca/AcademicProgramsiCORE.aspx>
- **Nano Facilities**
<http://www.cnn.ualberta.ca/>
- **Dean’s Research Awards**
<http://www.engineering.ualberta.ca/Research/UndergraduateResearch/DeanResearchAward.aspx>



Faculty Stature - Canada

| University | Rank | Professors (2) | Rank | Undergraduates (2) | Rank | Graduate Students (2) | Rank | NSERC Grants (\$M) (4) | Rank | NSERC Scholarships (\$M) (4) | Rank | Total Research Funding (\$M) (5) | Rank | Papers (6) | Rank | Citations (6) | Rank | Federal Chairs (\$M) (7) | Rank | NSERC IRC (\$M) (8) | Sum of Individual Rankings (3) | Overall Ranking (3) |
|-------------------|------|----------------|------|--------------------|------|-----------------------|------|------------------------|------|------------------------------|------|----------------------------------|------|------------|------|---------------|------|--------------------------|------|---------------------|--------------------------------|---------------------|
| Alberta | 4 | 185 | 3 | 3919 | 1 | 1541 | 2 | \$105.48 | 4 | \$11.99 | 2 | \$43.62 | 2 | 5053 | 2 | 38634 | 1 | \$3.90 | 1 | \$14.11 | 20 | 1 |
| Calgary | 8 | 138 | 7 | 2879 | 2 | 1444 | 9 | \$57.92 | 8 | \$7.48 | 4 | \$27.98 | 6 | 2516 | 9 | 13891 | 9 | \$1.40 | 4 | \$6.76 | 62 | 7 |
| Ecole Poly. Laval | 2 | 213 | 5 | 3519 | 5 | 1167 | 3 | \$105.32 | 6 | \$9.99 | 1 | \$45.22 | 7 | 2382 | 7 | 15501 | 4 | \$2.90 | 2 | \$9.48 | 41 | 4 |
| McGill | 9 | 133 | 10 | 2443 | 8 | 750 | 6 | \$84.49 | 5 | \$11.83 | | | 5 | 3315 | 5 | 24386 | 7 | \$2.30 | 6 | \$2.95 | 61 | 6 |
| McMaster | 10 | 131 | 6 | 3049 | 7 | 788 | 8 | \$58.13 | 10 | \$6.15 | | | 8 | 2368 | 6 | 18957 | 3 | \$3.20 | 7 | \$2.72 | 65 | 8 |
| Queen's | 7 | 143 | 8 | 2575 | 9 | 451 | 10 | \$49.90 | 9 | \$7.39 | | | 9 | 2049 | 8 | 14746 | 8 | \$1.50 | 10 | \$1.24 | 78 | 10 |
| Toronto | 3 | 210 | 2 | 4294 | 3 | 1440 | 1 | \$110.01 | 1 | \$25.59 | | | 1 | 5181 | 1 | 53859 | 2 | \$3.40 | 8 | \$2.53 | 22 | 2 |
| UBC | 6 | 149 | 4 | 3818 | 6 | 1059 | 4 | \$104.15 | 3 | \$12.86 | 3 | \$33.73 | 4 | 3766 | 3 | 26535 | 6 | \$2.50 | 9 | \$1.66 | 45 | 5 |
| Waterloo | 1 | 235 | 1 | 4457 | 4 | 1347 | 5 | \$94.41 | 2 | \$15.36 | | | 3 | 4123 | 4 | 26237 | 5 | \$2.80 | 3 | \$8.28 | 28 | 3 |

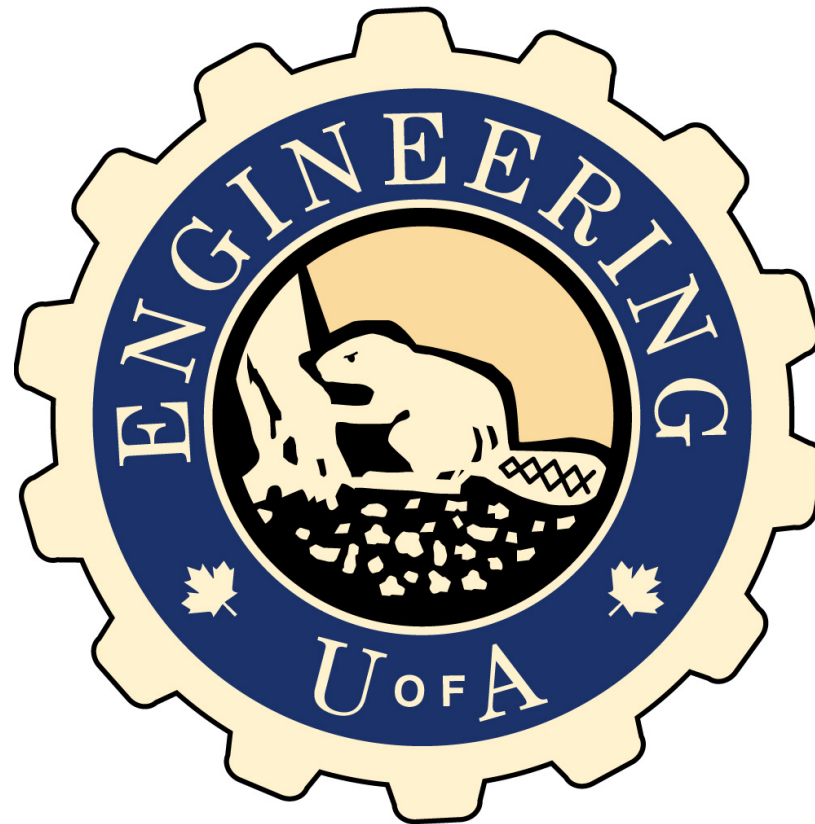


Faculty Stature – North America

| University (1) | Rank | Profs (2) | Rank | Ugrads (2) | Rank | Ugrads per Prof | Rank | Graduate Students | Rank | Grad. Stud per Prof | Rank | Research (\$M) (3) | Rank | Papers (4) | Rank | Papers per Prof | Rank | Citations (5) | Sum of Rankings (6) | Overall Ranking |
|----------------|------|-----------|------|------------|------|-----------------|------|-------------------|------|---------------------|------|--------------------|------|------------|------|-----------------|------|---------------|---------------------|-----------------|
| Alberta | 25 | 184 | 14 | 3905 | 8 | 21.22 | 19 | 1541 | 8 | 8.4 | 26 | \$43.6 | 13 | 894 | 8 | 4.9 | 26 | 33,995 | 121 | 15 |
| Caltech | 30 | 91 | 30 | 415 | 30 | 4.6 | 29 | 577 | 22 | 6.3 | 22 | \$84.5 | 28 | 677 | 1 | 7.4 | 9 | 63,294 | 179 | 27 |
| Cornell | 13 | 237 | 21 | 3145 | 24 | 13.3 | 16 | 1651 | 19 | 7.0 | 15 | \$134.6 | 16 | 860 | 23 | 3.6 | 13 | 57,622 | 145 | 21 |
| Florida | 11 | 264 | 10 | 5373 | 10 | 20.4 | 6 | 2675 | 4 | 10.1 | 25 | \$66.3 | 12 | 982 | 20 | 3.7 | 19 | 46,547 | 92 | 10 |
| GaTech | 1 | 396 | 2 | 8024 | 11 | 20.3 | 2 | 3331 | 6 | 8.4 | 4 | \$211.5 | 2 | 1540 | 17 | 3.9 | 4 | 83,346 | 45 | 1 |
| Maryland | 20 | 200 | 23 | 3015 | 23 | 15.1 | 20 | 1519 | 13 | 7.6 | 11 | \$154.8 | 21 | 797 | 14 | 4.0 | 22 | 43,704 | 156 | 23 |
| McGill | 28 | 133 | 25 | 2537 | 15 | 19.1 | 28 | 833 | 23 | 6.3 | | | 27 | 718 | 5 | 5.4 | 30 | 24,627 | 181 | 29 |
| Michigan | 4 | 362 | 9 | 5479 | 22 | 15.1 | 4 | 3034 | 7 | 8.4 | 7 | \$188.5 | 3 | 1380 | 18 | 3.8 | 5 | 81,762 | 72 | 2 |
| Minnesota | 18 | 211 | 16 | 3824 | 18 | 18.1 | 18 | 1621 | 12 | 7.7 | 20 | \$104.0 | 18 | 830 | 15 | 3.9 | 17 | 48,776 | 132 | 17 |
| MIT | 3 | 371 | 27 | 2010 | 29 | 5.4 | 5 | 2813 | 14 | 7.6 | 1 | \$332.5 | 1 | 1863 | 7 | 5.0 | 1 | 146,612 | 87 | 6 |
| NCState | 6 | 328 | 8 | 5950 | 17 | 18.1 | 10 | 2290 | 18 | 7.0 | 12 | \$148.4 | 23 | 766 | 30 | 2.3 | 27 | 28,207 | 139 | 18 |
| Northwestern | 22 | 188 | 28 | 1537 | 28 | 8.2 | 23 | 1376 | 16 | 7.3 | 19 | \$107.7 | 14 | 883 | 10 | 4.7 | 7 | 68,162 | 148 | 22 |
| Ohio State | 10 | 265 | 6 | 6389 | 3 | 24.1 | 17 | 1633 | 24 | 6.2 | 17 | \$126.9 | 19 | 821 | 28 | 3.1 | 24 | 38,392 | 131 | 16 |
| Penn State | 5 | 353 | 1 | 8483 | 4 | 24.0 | 14 | 1819 | 29 | 5.2 | 14 | \$137.7 | 10 | 1079 | 29 | 3.1 | 8 | 67,102 | 100 | 13 |
| Princeton | 29 | 126 | 29 | 1035 | 27 | 8.2 | 30 | 564 | 30 | 4.5 | 24 | \$71.8 | 29 | 663 | 6 | 5.3 | 20 | 46,472 | 200 | 30 |
| Purdue | 8 | 315 | 4 | 7257 | 5 | 23.0 | 9 | 2377 | 15 | 7.5 | 5 | \$206.0 | 9 | 1122 | 24 | 3.6 | 14 | 56,222 | 88 | 8 |
| Stanford | 15 | 218 | 24 | 2678 | 25 | 12.3 | 1 | 3386 | 2 | 15.5 | 6 | \$197.4 | 5 | 1274 | 3 | 5.8 | 3 | 96,047 | 78 | 3 |
| Texas A&M | 7 | 325 | 3 | 7395 | 6 | 22.8 | 8 | 2591 | 10 | 8.0 | 2 | \$274.3 | 7 | 1197 | 21 | 3.7 | 21 | 44,796 | 83 | 5 |
| Texas Austin | 9 | 266 | 11 | 5294 | 12 | 19.9 | 11 | 1937 | 17 | 7.3 | 9 | \$168.7 | 8 | 1150 | 12 | 4.3 | 11 | 59,976 | 91 | 9 |
| Toronto | 17 | 215 | 13 | 4531 | 9 | 21.1 | 15 | 1672 | 11 | 7.8 | | | 11 | 1035 | 9 | 4.8 | 15 | 54,266 | 100 | 13 |
| UBC | 21 | 195 | 17 | 3818 | 14 | 19.6 | 27 | 1059 | 28 | 5.4 | 27 | \$33.7 | 26 | 736 | 19 | 3.8 | 29 | 25,523 | 181 | 29 |
| UC Davis | 19 | 201 | 22 | 3124 | 21 | 15.5 | 26 | 1221 | 25 | 6.1 | 23 | \$79.5 | 22 | 782 | 16 | 3.9 | 23 | 39,723 | 174 | 26 |
| UCB | 16 | 217 | 19 | 3442 | 20 | 15.9 | 12 | 1852 | 5 | 8.5 | 8 | \$186.9 | 4 | 1343 | 2 | 6.2 | 2 | 96,102 | 80 | 4 |
| UCLA | 27 | 154 | 20 | 3311 | 7 | 21.5 | 13 | 1845 | 3 | 12.0 | 21 | \$100.5 | 15 | 862 | 4 | 5.6 | 10 | 62,811 | 99 | 11 |
| UCSD | 23 | 186 | 12 | 4878 | 1 | 26.2 | 21 | 1493 | 9 | 8.0 | 13 | \$146.4 | 24 | 757 | 13 | 4.1 | 18 | 48,315 | 121 | 15 |
| UIUC | 2 | 385 | 5 | 7181 | 16 | 18.7 | 7 | 2659 | 21 | 6.9 | 3 | \$220.5 | 6 | 1271 | 25 | 3.3 | 6 | 72,178 | 88 | 8 |
| USC | 26 | 174 | 26 | 2125 | 26 | 12.2 | 3 | 3221 | 1 | 18.5 | 10 | \$168.4 | 30 | 640 | 22 | 3.7 | 25 | 37,942 | 159 | 24 |
| Washington | 14 | 228 | 15 | 3898 | 19 | 17.1 | 24 | 1304 | 27 | 5.7 | 18 | \$113.0 | 25 | 742 | 27 | 3.3 | 12 | 57,681 | 163 | 25 |
| Waterloo | 12 | 246 | 7 | 6202 | 2 | 25.2 | 22 | 1421 | 26 | 5.8 | | | 20 | 805 | 26 | 3.3 | 28 | 26,421 | 143 | 20 |
| Wisconsin | 23 | 186 | 18 | 3694 | 13 | 19.9 | 25 | 1289 | 20 | 6.9 | 16 | \$127.3 | 17 | 853 | 11 | 4.6 | 16 | 49,816 | 143 | 20 |



Questions...?



Univ. of Alberta Engineering