

The Ecology of the 1st year Faculty

Knowing your Environment

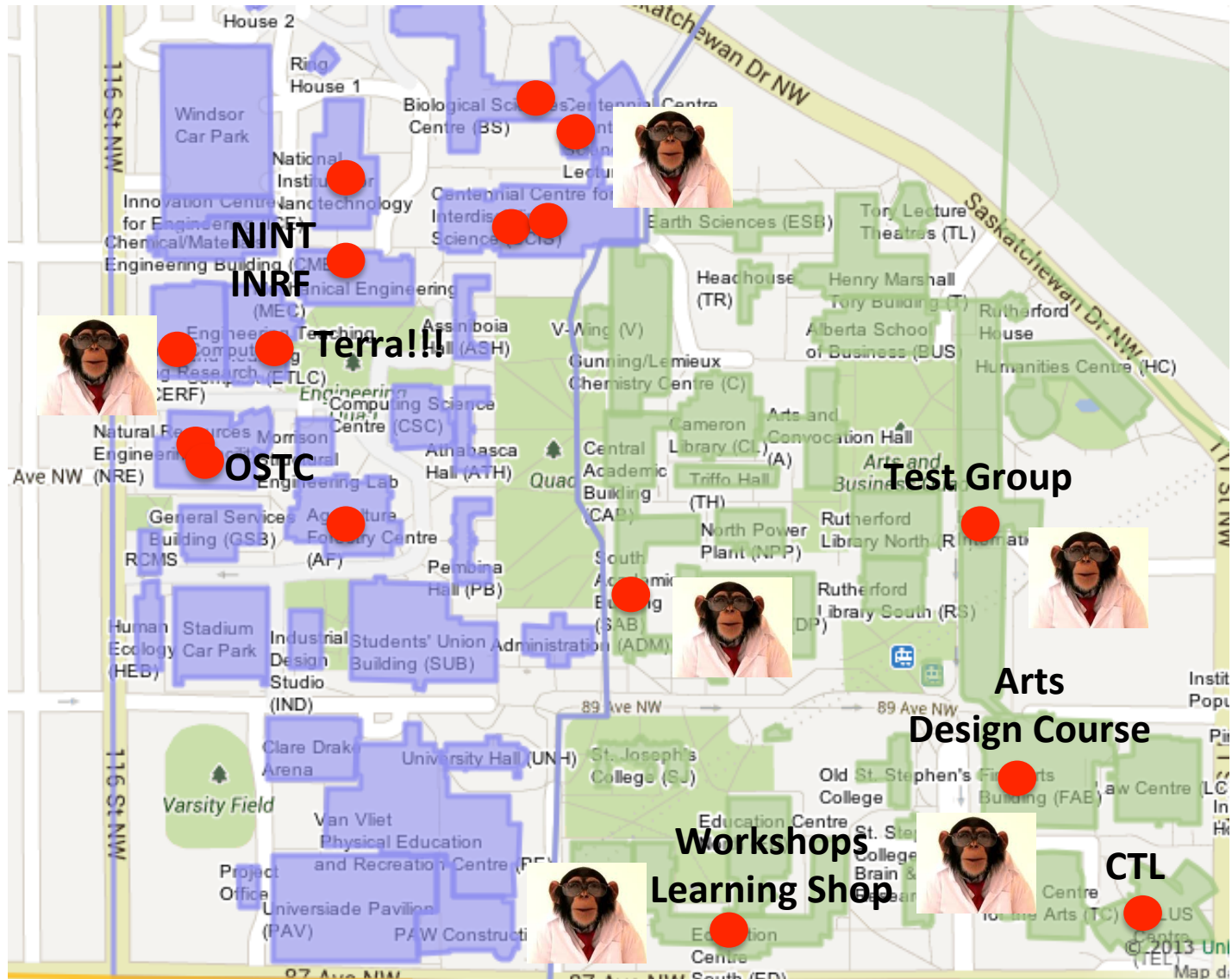
Dominic Sauvageau
Chemical and Materials Engineering



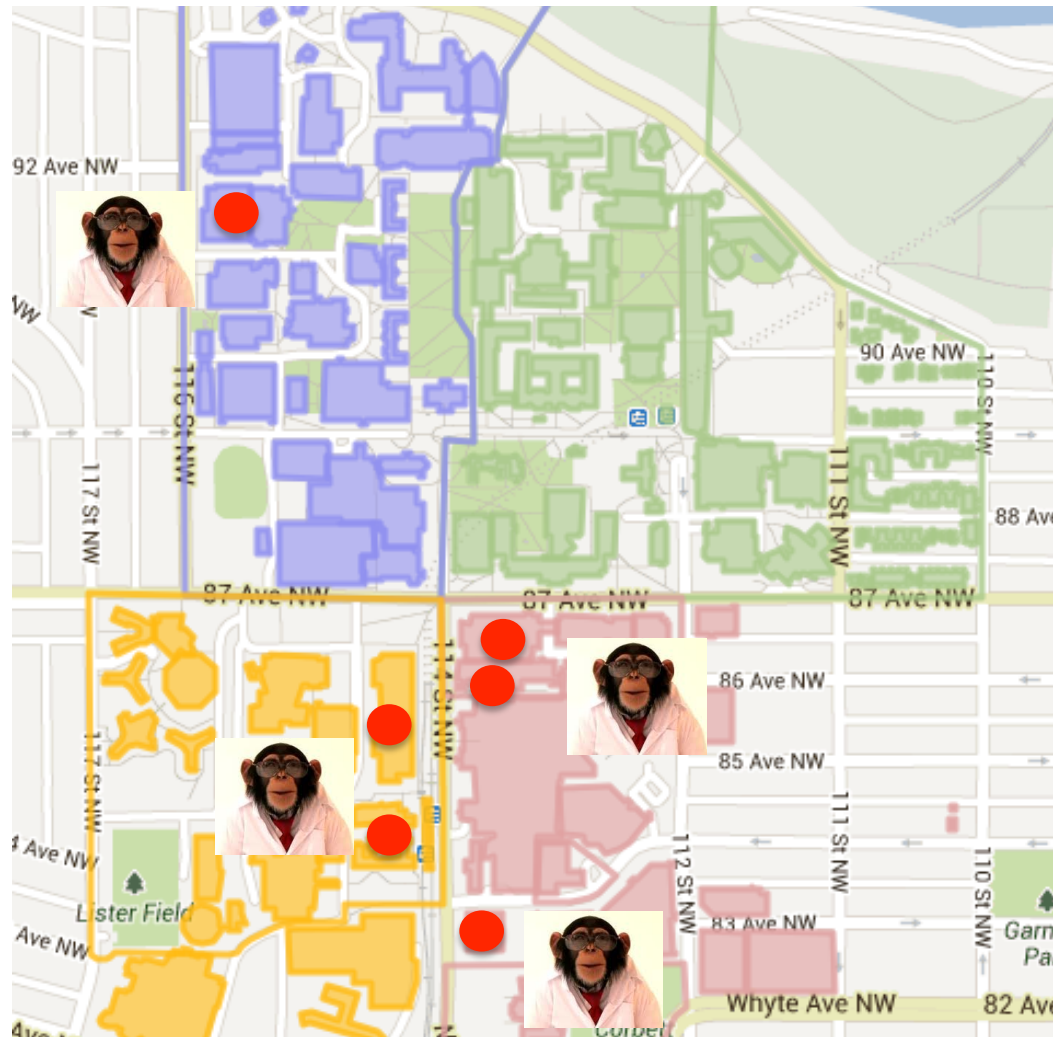
Department - Lair



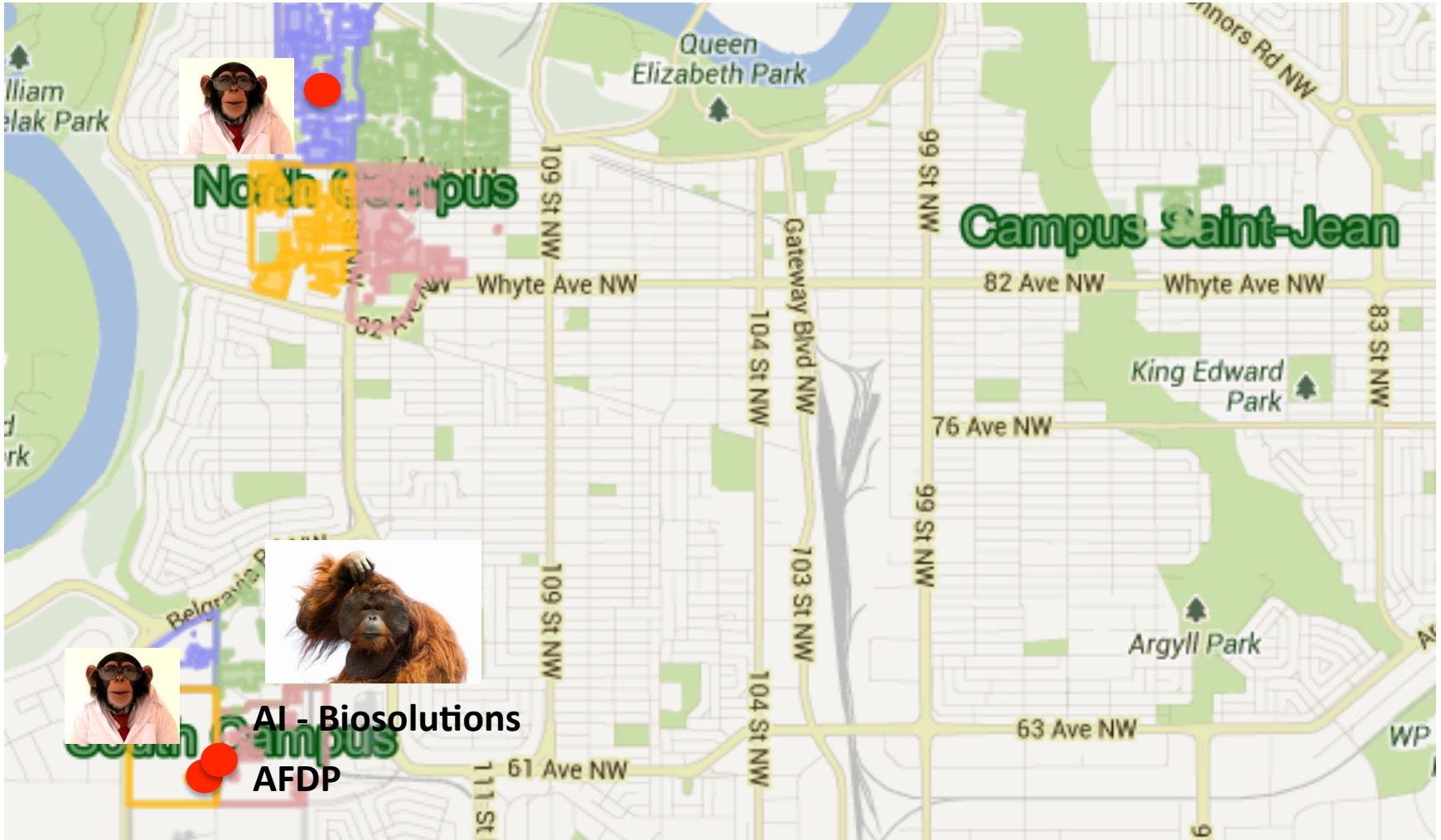
Part of Campus – Vicinity



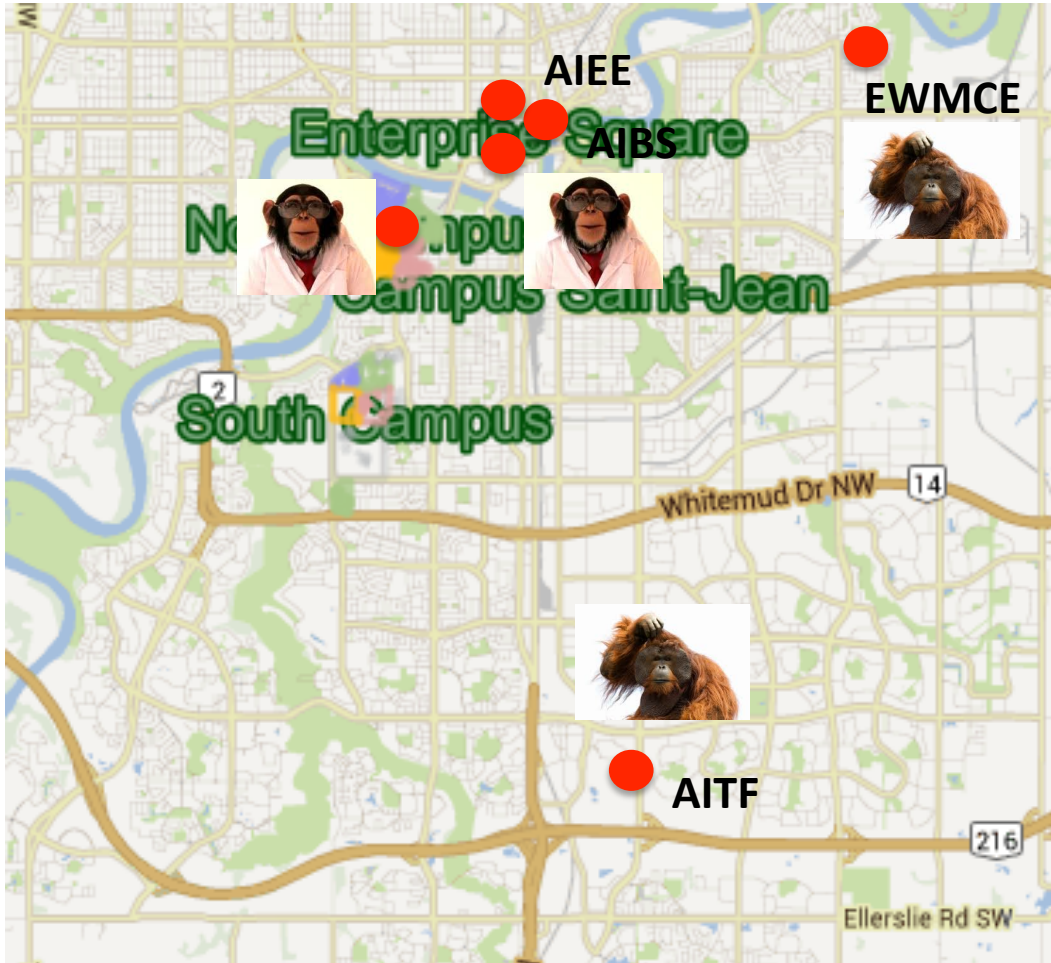
North Campus - Habitat



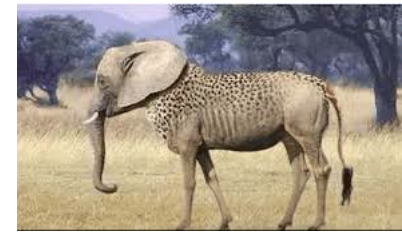
South Campus – Extended habitat



Outside of Campus – Ecosystem



What is Alberta Innovates?



What other resources are there?

Who are the other players involved in my field?

- EWMCE
- Epcor
- City of Edmonton



International connections - Ecosystem



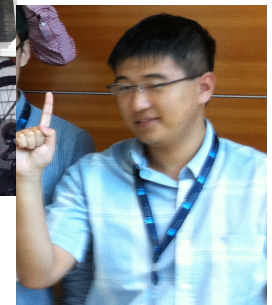
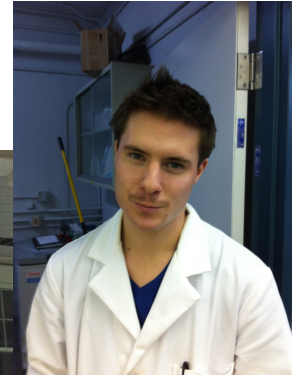
Resources – use them!

- Teaching
 - Center for Teaching and Learning (CTL)
 - ctl.ualberta.ca
 - TLEF
 - www.provost.ualberta.ca/en/AwardsandFunding/tlef.aspx
 - American Society for Engineering Education (ASEE)
 - www.asee.org
- Workshops
 - The Learning Shop
 - sldregistration.ualberta.ca/CourseCalendar.do
- UofA International
 - www.international.ualberta.ca



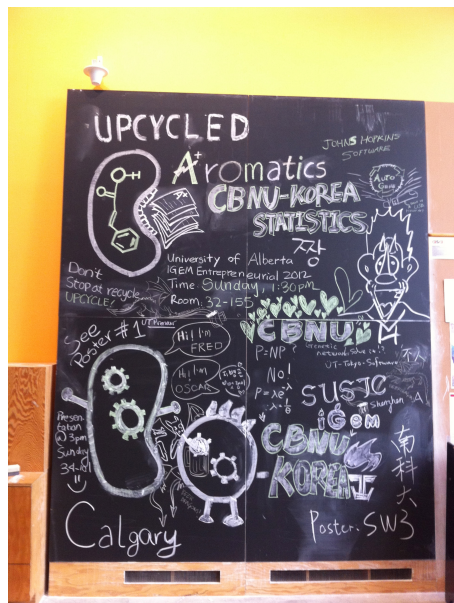
Resources – use them!

- Research
 - Research Services Office
 - www.rso.ualberta.ca
 - TecEdmonton
 - www.tecedmonton.com
- Setting up your lab
 - Talk to reps...
 - **Take care of your grad(s)**
 - **Don't underestimate one of our best resources: undergrads**
 - Dean's Research Awards (DRA)
 - NSERC Undergraduate Student Research Awards (USRA)



And do as they say... not as I did.

- Write your proposals early
- Don't take on "extracurricular activities"
 - But do...
 - Opportunities present themselves all the time...
 - They're what makes this job so great



Resources

- Your colleagues!!!

dominic.sauvageau@ualberta.ca



- Chimp pictures

- photobucket.com

- chimpout.com

- animals.nationalgeographic.com/animals/mammals/chimpanzee/