

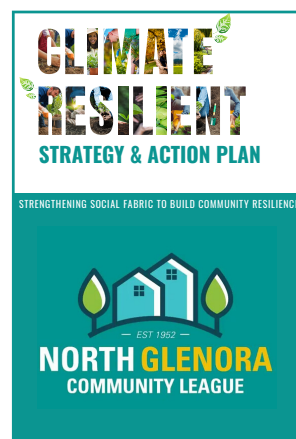
NEIGHBOURHOOD CLIMATE RESILIENCE LAB

The goal of this project was to develop a climate strategy and a single, ready-to-implement climate action for the North Glenora neighbourhood. The Edmonton Federation of Community Leagues has expressed interest in the emerging field of neighbourhood-level climate action and is rooted in an asset-based community development approach to foster local climate action initiatives through identifying and mobilizing assets in communities. These two deliverables can serve as a model for other leagues who wish to participate in similar labs across Edmonton.

Our Climate Resilient Strategy & Action Plan and the 'Be Bike Smart' Action Implementation Plan are based on extensive literature review, examples of community climate action, a neighbourhood site visit and two community engagement sessions with the North Glenora community. Our Final Report recommends that further engagement opportunities be provided to build on current community momentum. This will allow for more extensive feedback on potential community climate actions that North Glenora can implement. It also recommends that additional community engagement opportunities be guided by the Strategy.

“A MORE ENGAGED COMMUNITY IS A MORE PREPARED COMMUNITY, AND A MORE PREPARED COMMUNITY IS A MORE RESILIENT COMMUNITY.”

The goal of the Strategy is to increase the social fabric and community connectedness in order to build a resilient North Glenora. The Strategy is a 30-page document divided into two parts. The first part provides all relevant background knowledge and the second part is a framework to guide North Glenora through their climate efforts. The Strategy & Action Plan Framework supports further engagement, is highly interrelated, adaptable and flexible.



- | | | |
|------------------|---|---|
| ENGAGE COMMUNITY | 1 | DESCRIBE THE ACTION |
| | 2 | IDENTIFY OUTCOMES & IMPACTS OF THE ACTION |
| | 3 | PROVIDE RATIONALE FOR THE ACTION |
| | 4 | DEVELOP IMPLEMENTATION WORK PLAN |
| ENGAGE COMMUNITY | 5 | IMPLEMENT THE ACTION |
| | 6 | TRACK & ASSESS THE ACTION |

We chose the bike workshop idea based on feedback from the community engagement sessions. The 'Be Bike Smart' Action Implementation Plan was prepared to guide North Glenora through the action implementation process and is developed in accordance with the guidelines of the Climate Resilient Strategy & Action Plan. It serves as a ready-to-implement action plan and follows the key steps outlined in the 'Take Target Action' phase from the Climate Resilient Strategy & Action Plan.