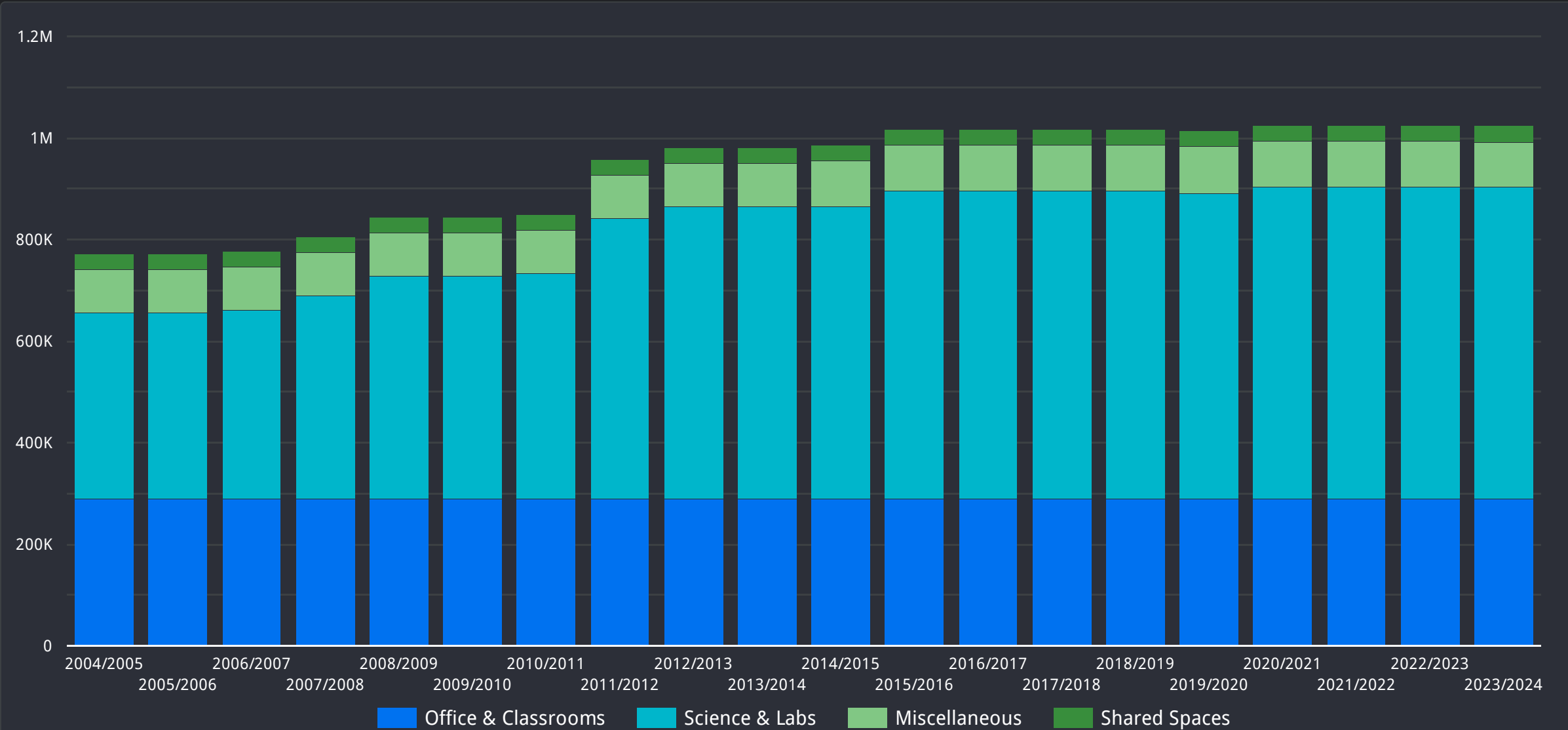




Note: Data reported in m<sup>2</sup>

## North Campus Area Growth (2004 - 2024)





# UNIVERSITY OF ALBERTA

## Energy Reduction at University of Alberta

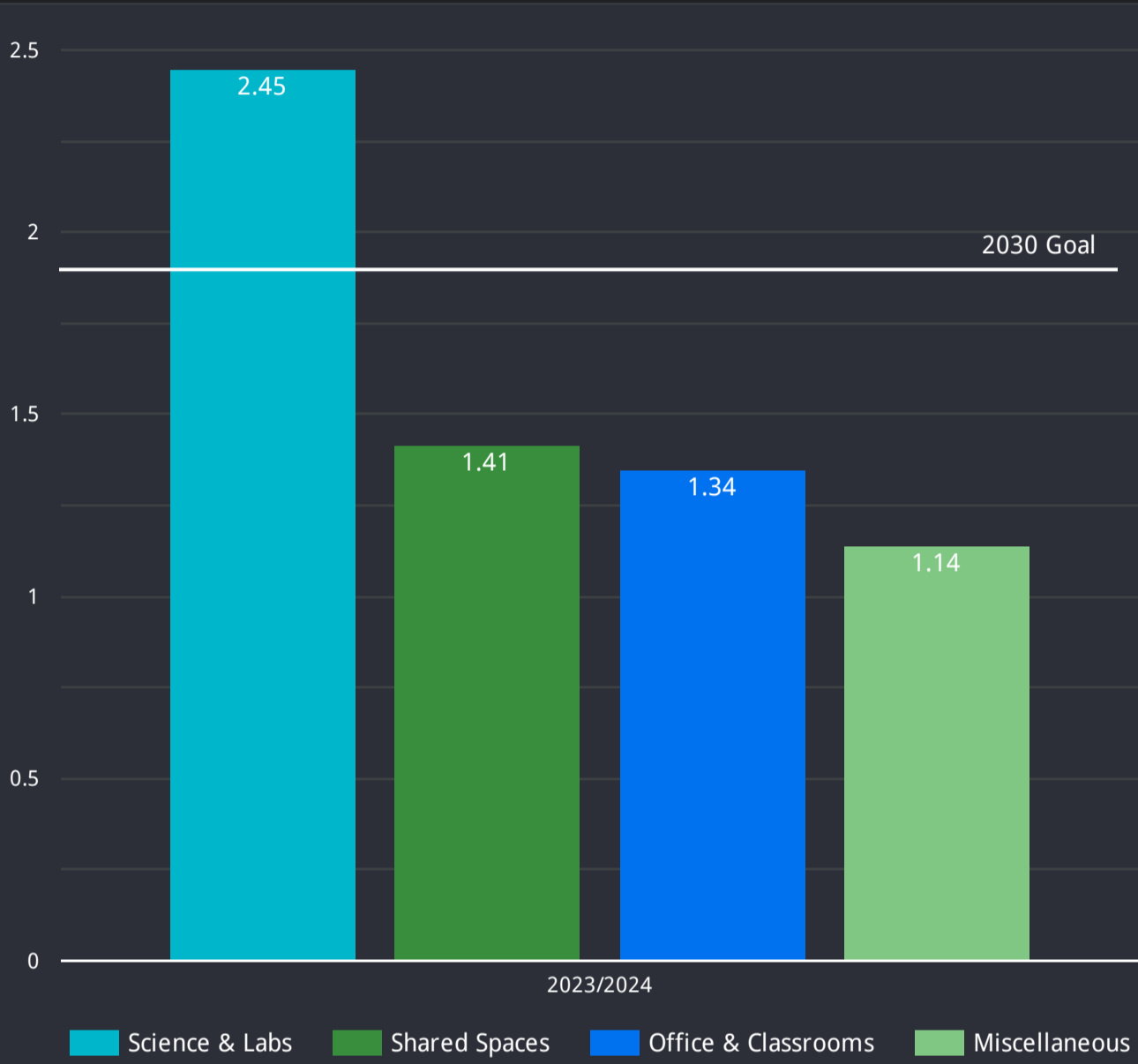
The University of Alberta's University Services, Operations + Finance (USOF) portfolio is committed to reducing its impact on the environment. Outlined in the Energy Reduction Master Plan, the University of Alberta has a strategic goal to reduce its overall energy intensity 15% below 2019/2020 levels by 2030. Much of this reduction will be achieved by decreasing the amount of energy used by buildings and greening the university's energy supply. Energy + Climate Action conducts building audits to identify areas where energy and water waste are occurring, and creates phased plans to address these issues as part of the ongoing Energy Management Program. Additionally, USOF operations and utilities groups meet regularly to review each building's energy and water use, look for usage anomalies and follow up on operational issues that are identified.

Energy Use Intensity (EUI) represents how much energy a building uses relative to its size. For this dashboard, energy use refers to electricity, steam, chilled water and natural gas consumption. We express EUI in gigajoules per gross square meter (GJ/m<sup>2</sup>) of building space, and the numbers shown on this page are only for North Campus.

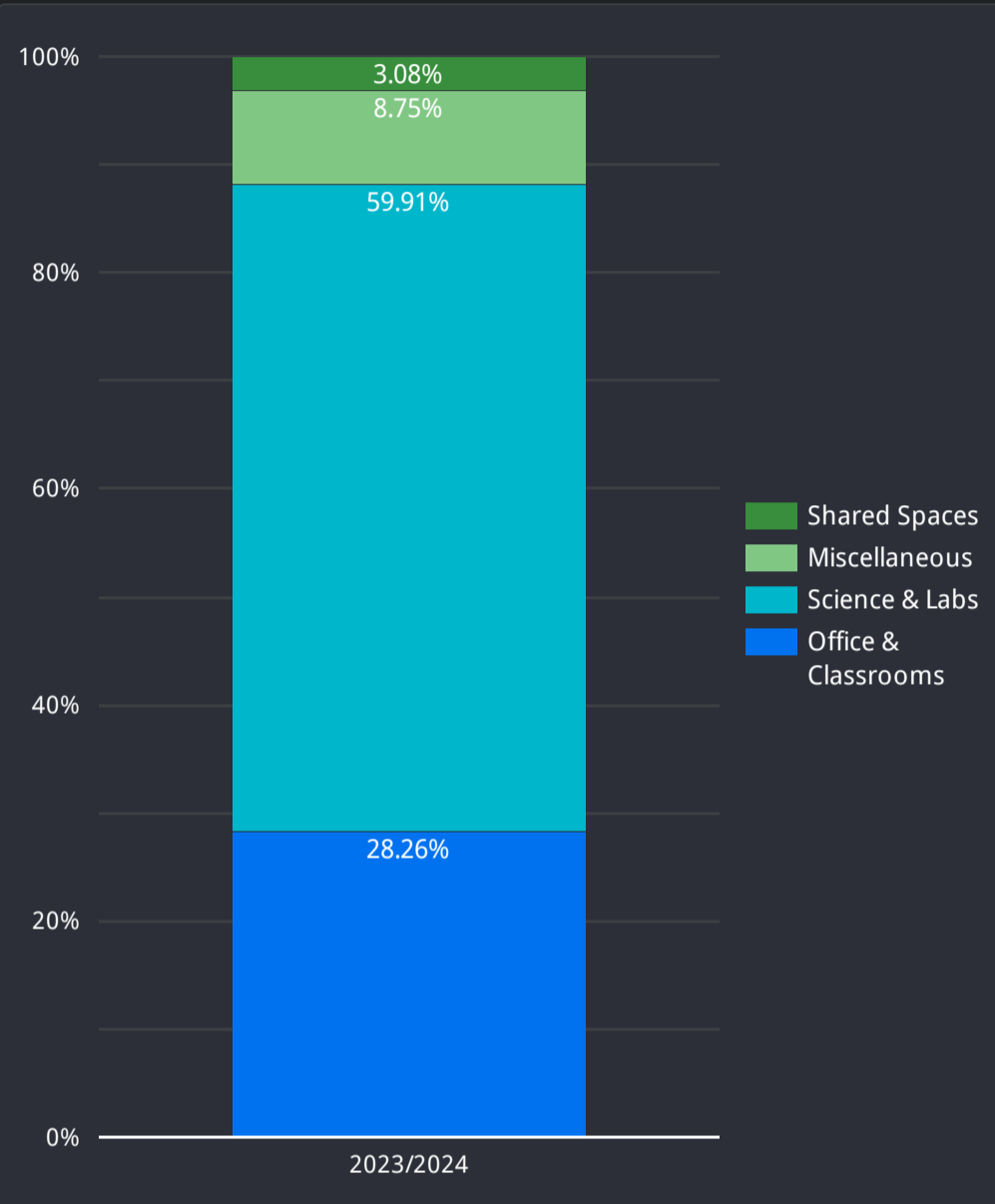
North Campus EUI (GJ/m<sup>2</sup>) for 2023/2024

1.99

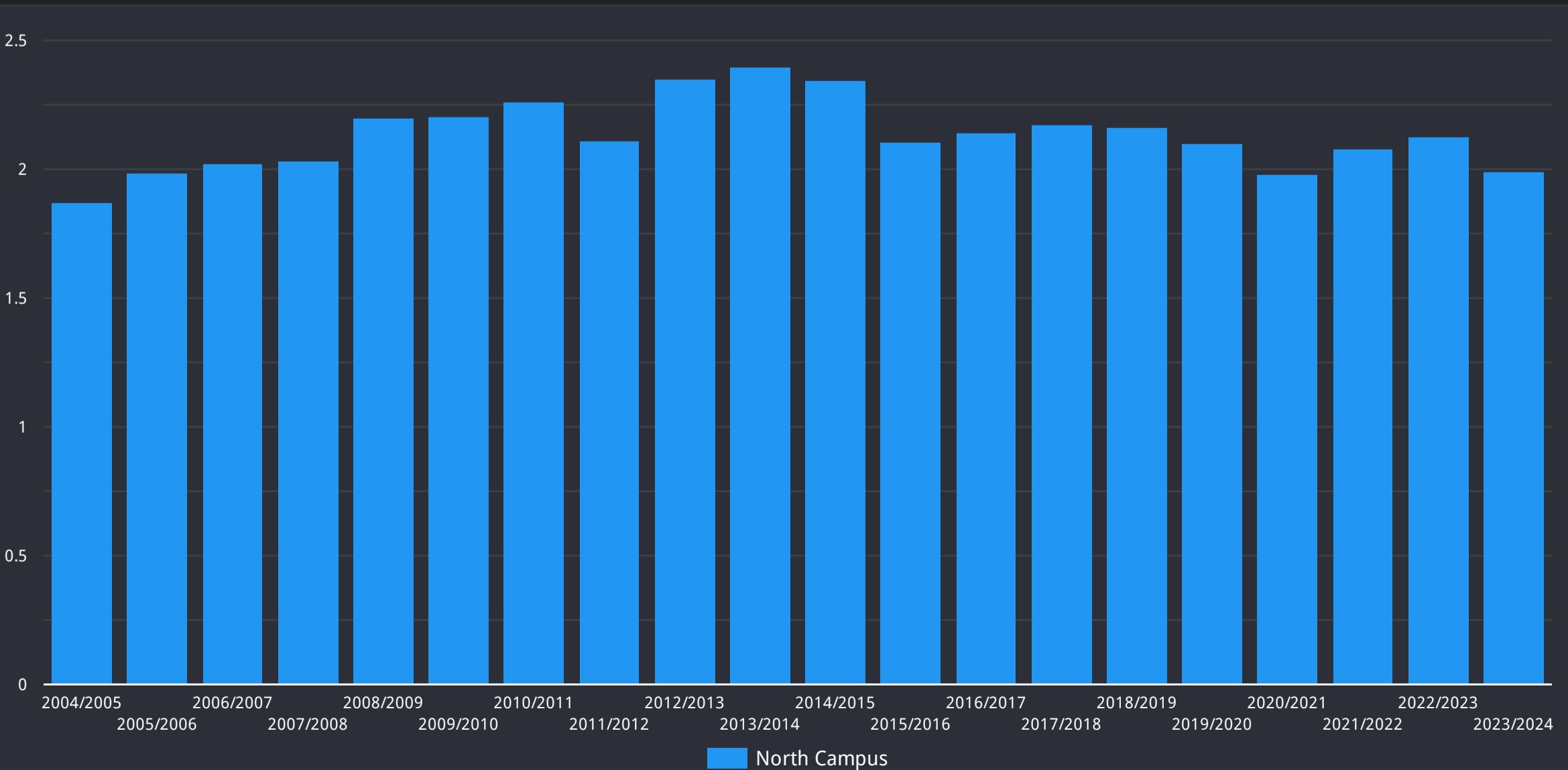
### Energy Use Intensity by Building type (2023/2024)



### North Campus Building Types by % of Total Building Area



### North Campus EUI by Year





North Campus WUI (m<sup>3</sup>/m<sup>2</sup>) for 2023/2024

0.94

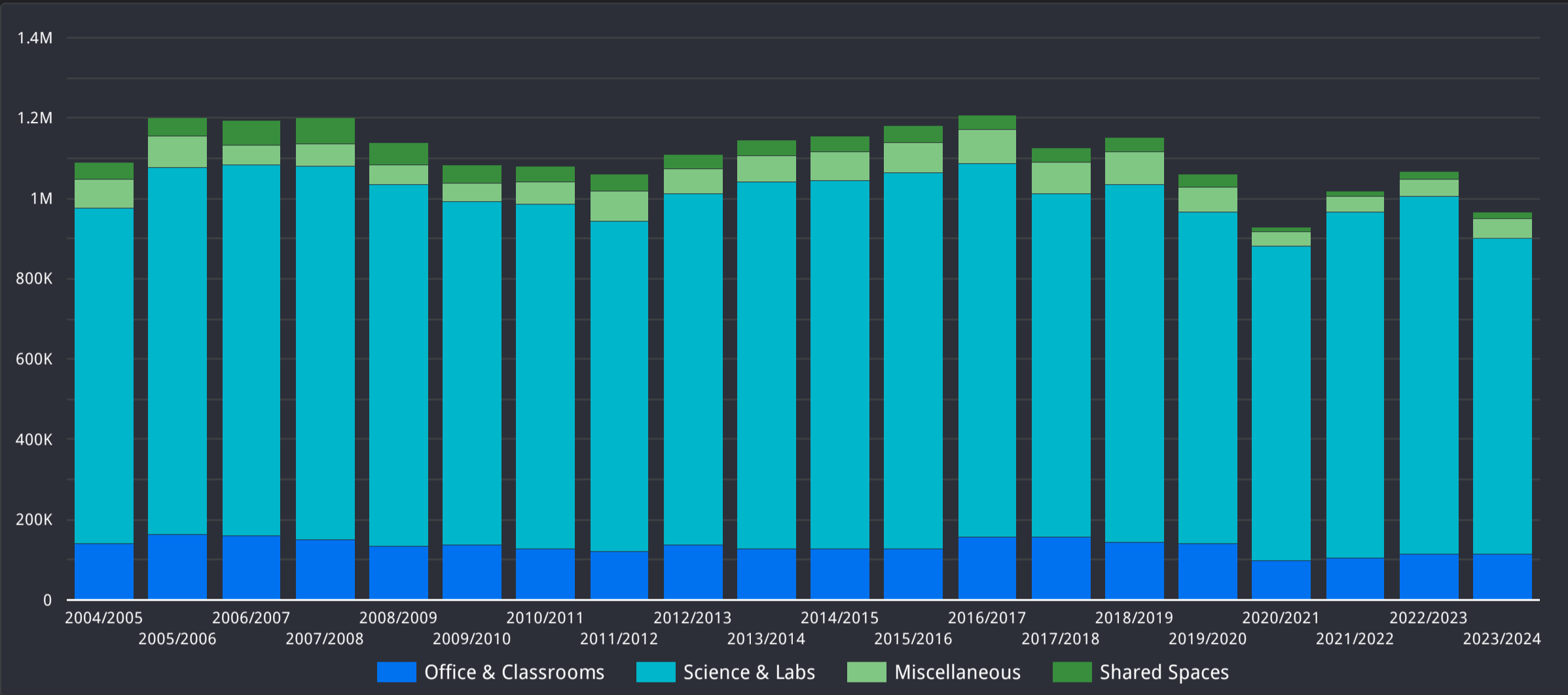
## Proactive Water Protection

The University of Alberta's water management program, Watego, is a university wide water stewardship program focused on contributing to a sustainable water future. Initiatives include: water use reductions, water closet fixture upgrades, lab upgrades, pilots of innovative technologies, behavior change campaigns, and support for campus community-led water reduction projects. Although Watego applies to all campuses, the data shown on this page is only for North Campus.

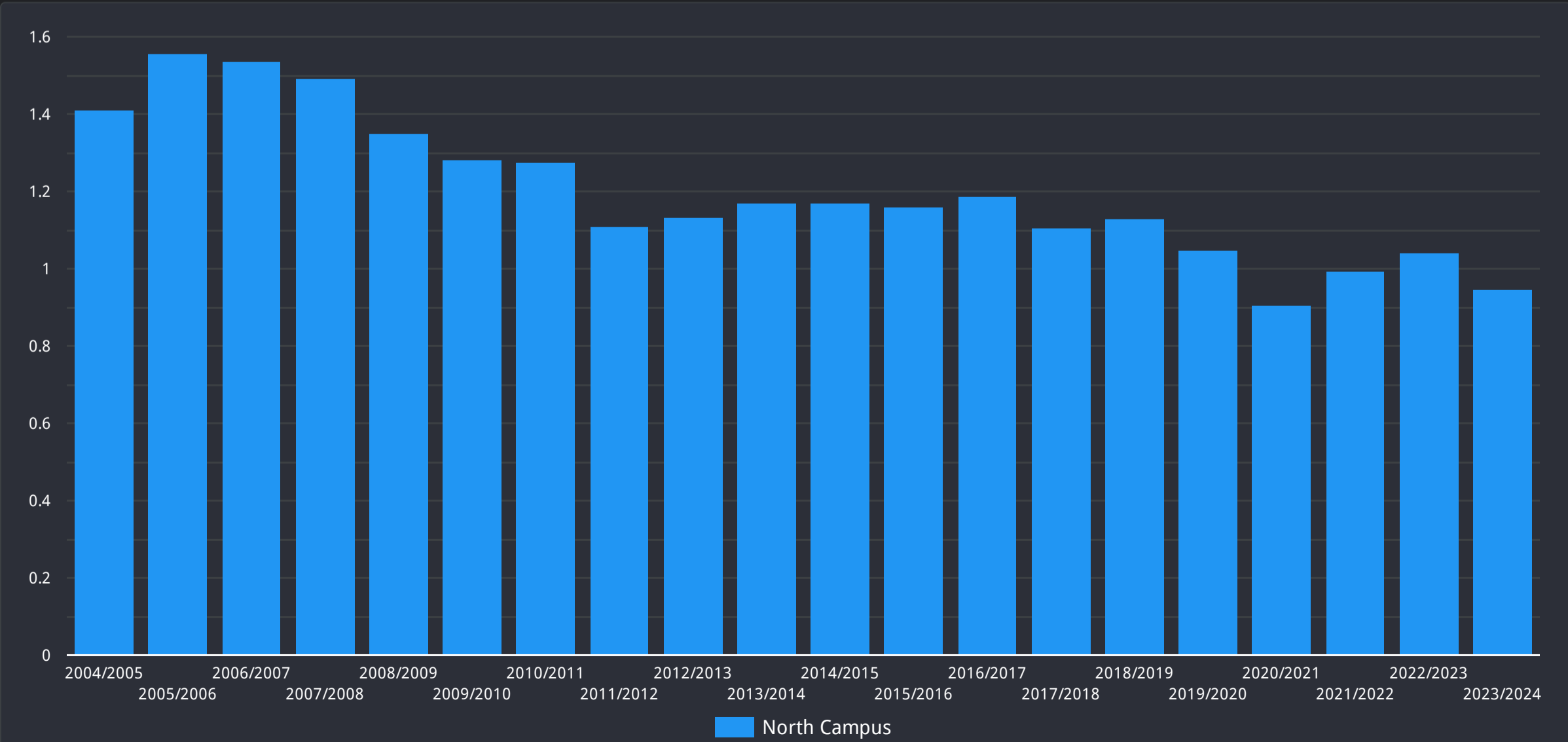
Want to learn more about water stewardship at UAlberta? The Water Management Plan explains what the university is doing to reduce its water use and contribute to a sustainable water future in Alberta.

Year

### Annual Water Consumption by Building Type

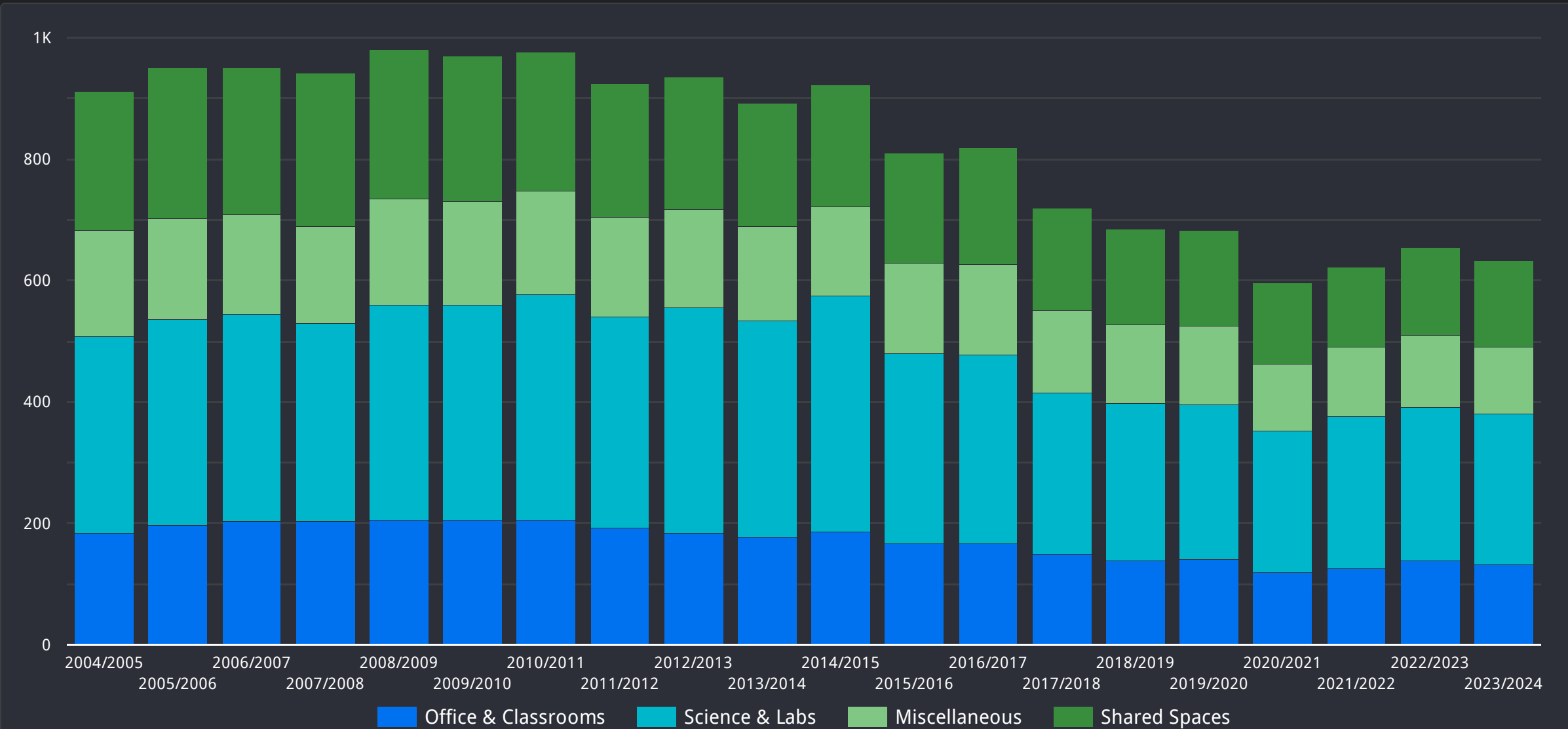


### Water Use Intensity by Year (North Campus)



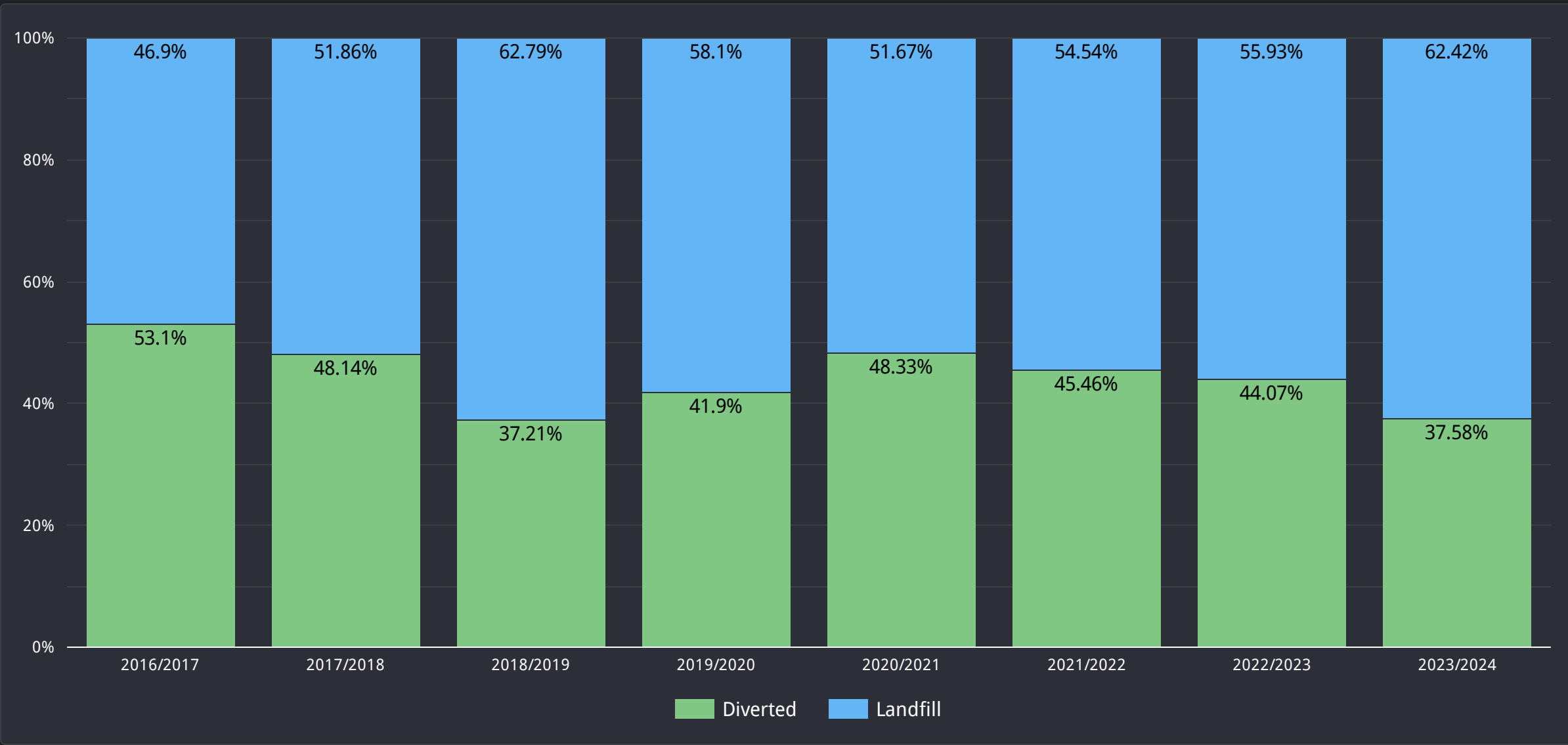
Note: Data reported in kg CO<sub>2</sub> / m<sup>2</sup>

## Carbon Emissions by Building Type (North Campus)

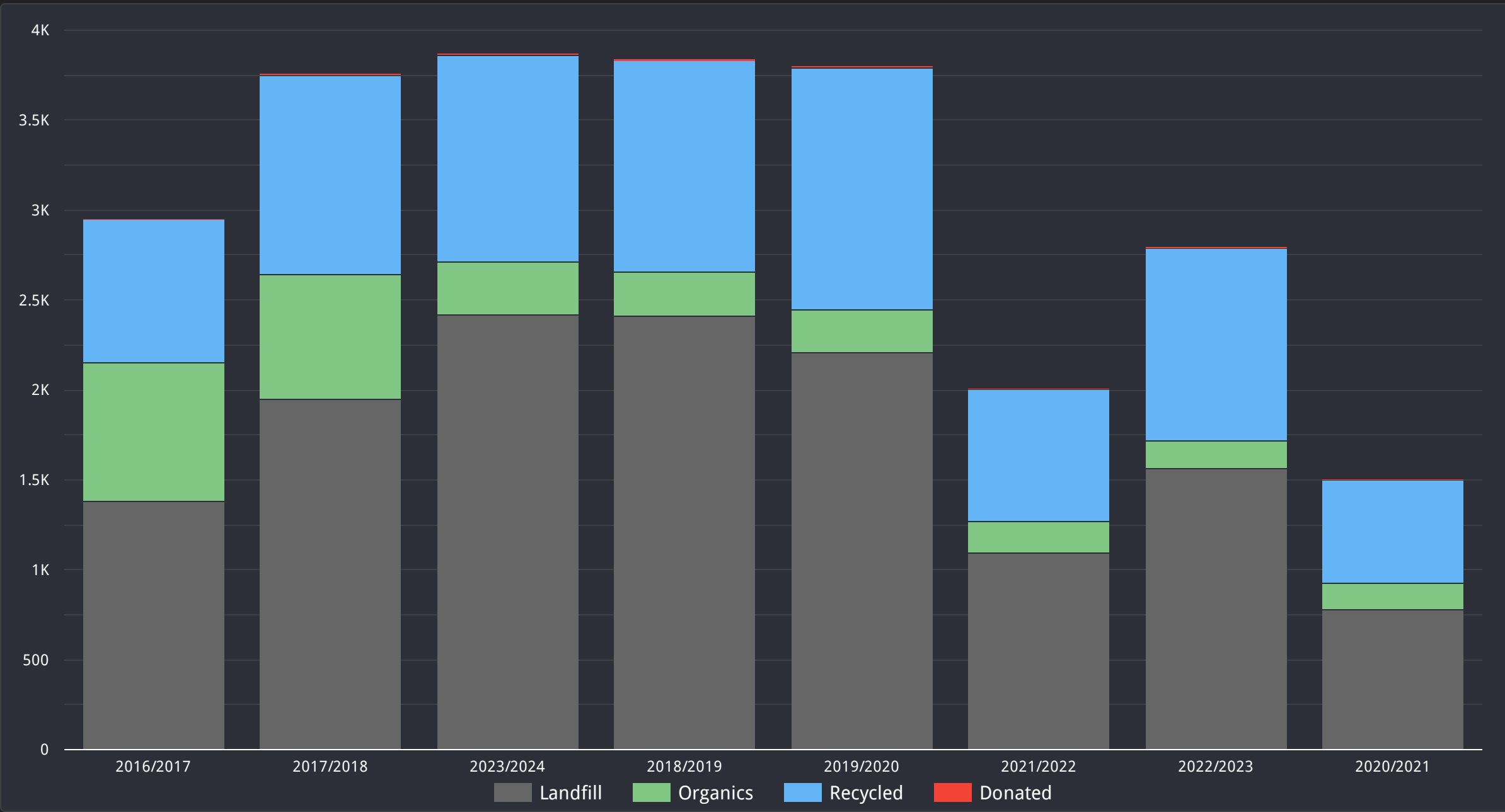


Note: Data reported in Metric Tonnes

## Waste Diversion 2016 - 2024 (All Campuses)



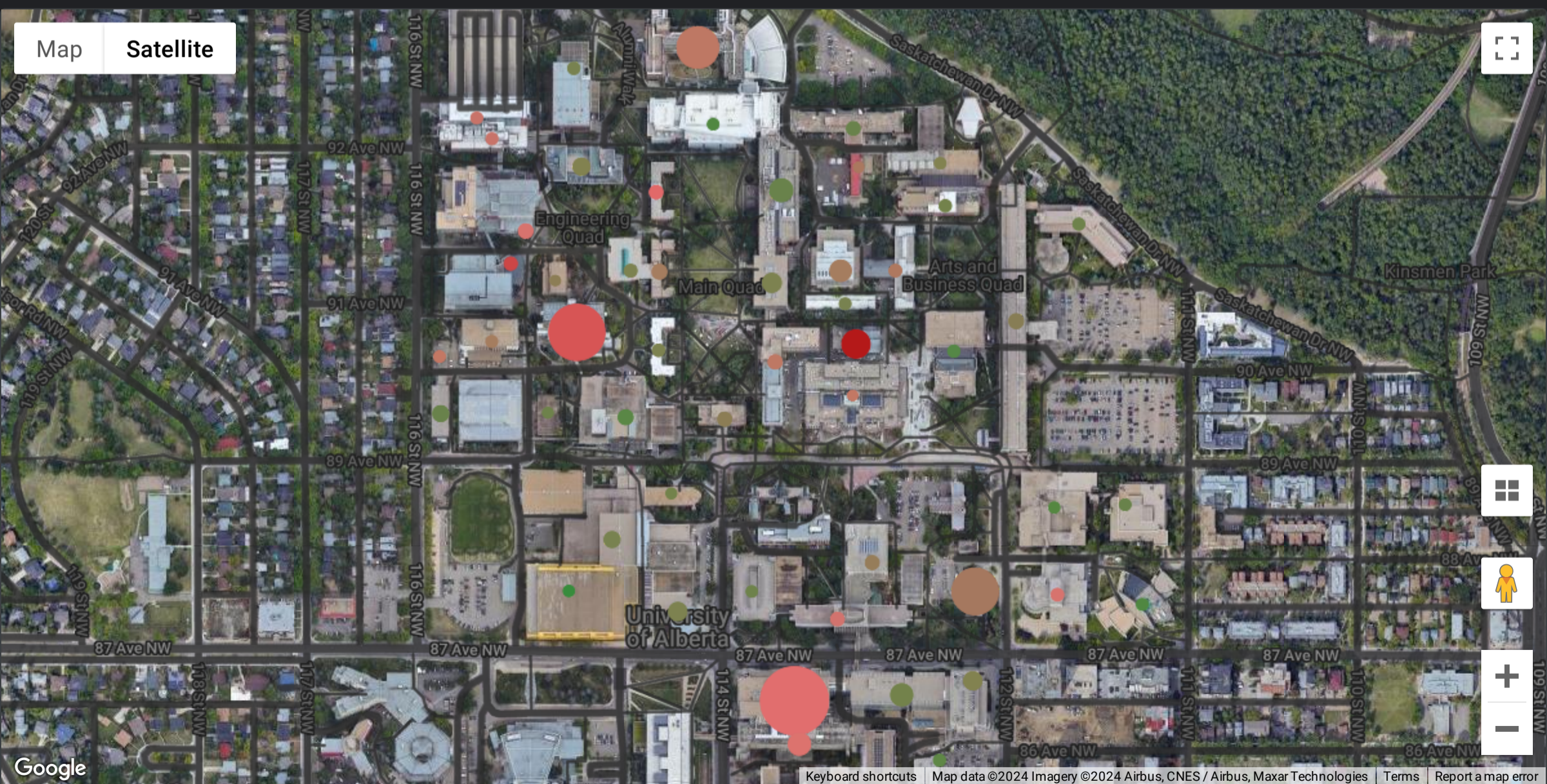
## Waste Diversion Breakdown 2016 - 2024 (All Campuses)



% Change of 2022/23 EUI from Baseline 2019/20



% Change of 2022/23 WUI from Baseline 2019/20





# UNIVERSITY OF ALBERTA

Note: The following 2022/2023 data encapsulates an approximate energy and water use for University owned and operated areas on all campuses (including residences). The data does not include other areas managed by Campus Services such as vendor spaces in buildings.

		Energy Consumed					
	Gross Area (sqm)	Electricity	Natural Gas	Steam	Chilled Water		Water
Campus	Sum Gross Area (sqm)	GJ	GJ	GJ	GJ	Total (GJ)	Total Volume (m <sup>3</sup> )
North Campus	1,106,566.34	675,866.01	79,775.81	1,616,818.19	79,916.57	2,452,376.58	2,239,938
Augustana	40,962.93	18,885.32	141,743			160,628.57	94,624
South Campus	52,377.00	45,547.20	147,288			192,835.20	57,615
CSJ	18,205.69	13,267.26	92,268			105,535.26	42,055
Kinsella	5,189.00	3,846.28	2,239			6,085.28	5,708
Devon (Botanic Garden)	5,866.00	2,132.97	7,414			9,546.97	6,453
Others	13,755.00	180.00	300			480.00	15,131
<b>TOTAL</b>	<b>1,242,921.96</b>	<b>759,725.04</b>	<b>471,028.06</b>			<b>2,927,487.86</b>	<b>2,461,523</b>