

Additional Information about ALMRS

If you are seeking additional information about the station, please see the *Master Binder* located in the server room. This binder explains more about the station including:

- Sustainability Plan
- Safety Manual
- Monitoring Plan
- Incident and Investigation Forms
- WCB Forms
- Laboratory Chemical Safety Manual
- Chemical Spill Response Guideline
- Laboratory Safety Checklist

Contact Us

Found in Miquelon Lake Provincial Park

- 30km south of Camrose
- 45km west of Leduc
- 65km northwest of Edmonton

In emergency situations (Medical, Fire, Police) CALL: 911

Phone: 780-679-1556

Email: augamlrs@ualberta.ca or ghood@ualberta.ca

Web: <https://www.ualberta.ca/augustana/research/centres/amlrs>

Augustana Miquelon Lake Research Station

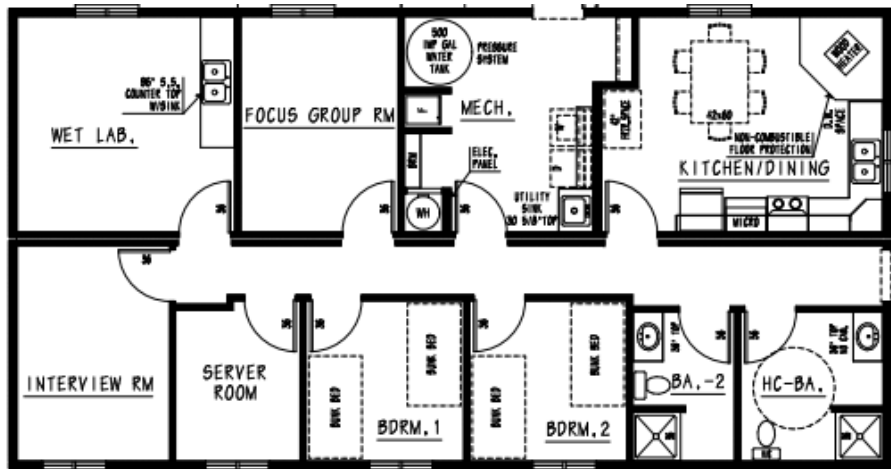


WELCOME AND ORIENTATION

Table of Contents

Welcome.....	1
User Expectations.....	2
Settling In.....	2
Accommodations and Responsibilities.....	2
Equipment.....	3
Safety.....	4
Outdoor Hazards.....	4
Indoor Hazards.....	4
Potentially Dangerous Wildlife.....	5

Station Layout



Potentially Dangerous Wildlife

Stinging Nettle and Canadian Thistle



Porcupine, Striped Skunk and Moose



Wasp and Bee



Safety

Outdoor Hazards

Wildlife: Please report all wildlife incidents to the Station Manager within 24 hours. The Manager will then notify the park.

Bears and Cougars have been seen in the park occasionally. Please be aware and carry deterrents (bear spray, bear bangers, knife, etc.) and be familiar with wildlife safety protocols. *For other potentially dangerous species see page 5.*

Weather: In order to prevent cold and heat stress from environmental conditions in the field be prepared and bring appropriate supplies. (Hot: sunscreen, hat, water, Cold: extra layers, warm boots and gloves, thermos with hot beverage)

Field Training: Researchers and their assistants may require additional training for working in the field including:

- Operating equipment (chainsaws, axes, etc.)
- First Aid
- Wild animal awareness and safety

Working Alone: If you are working alone, please have a communications plan in place. AMLRS has a Working Alone Policy template that should be filled out by any project that will include solo field research.

Indoor Hazards

Wet Lab Use: There must be distinct separation of the wet lab from the rest of the facility for the purposes of health and safety.

- **NO** unauthorized users may enter the lab
- Absolutely **NO** lab samples or chemicals can be stored in other areas of the station
- Users of the wet lab **MUST** wear proper protective clothing (lab coat, rubber gloves, closed-toed shoes, safety glasses)
- **NO** food or drink may be stored in the lab fridge or freezer

Wood Stove: Please be cautious of hot surfaces and empty ashes after use *Note collecting and burning firewood within the park is illegal*

Food Allergies: Please alert other users of the station if you have severe allergies or dietary restrictions. Proper communication will enhance health and safety for all users.

Observatory Use: There is only stair access, and the building is **NOT** heated. Bring extra layers if you will be using the observatory in the winter or at night.

Welcome!

Background



The Augustana Miquelon Lake Research Station (AMLRs) is part of the University of Alberta's Augustana Campus. Built in June 2015 in Miquelon Lake Provincial Park, the station was developed to address a broad spectrum of research questions and learning opportunities. With a strong focus on sustainability and partnership, we hope to promote knowledge sharing far into the future.

Sustainability



AMLRs is dedicated to operating in a sustainable manner. We ask that your actions at the station reflect an attitude of sustainability. Some suggested actions include:

- Conserve water
- Minimize waste through recycling
- Maintain digital files replacing paper
- Limit energy use (turn off lights)
- Don't idle your vehicle

User Expectations

Settling In

This station is a **shared** accommodation and research space. Users are expected to behave in a respectful manner towards other users and to the station itself.

Information on user expectations is included in the Code of Conduct Agreement that you signed prior to station use. There is a copy of this agreement in the server room on the bulletin board.

Accommodations and Responsibilities

Internet and Phone: The station is equipped with wired and wireless internet as a landline phone (780-679-1556).

UofA Users can access UWS with their CCID and password

Non-UofA Users can access Guest@UofA

Accommodation: The dormitory rooms in this station operate on a first-come, first serve basis; you may share a room with someone you do not know, or someone of a different sex. If the other users are willing, you may reorganize where people sleep to optimize everyone's comfort level.

Household Responsibilities: Users of the station are responsible for the cleanliness and maintenance of the station while they are here. These responsibilities include:

- Cooking and washing dishes
- Sweeping and mopping
- Cleaning bathrooms
- Putting garbage in the outdoor bins
- Putting paper, cardboard and tin blue bins
- Putting refundables in green bins and the outdoor bins

*If you come across problems with the facility (plumbing, electrical, plumbing), alert the Station Manager (contact information on back cover).

Equipment

Available Equipment

The Station is equipped with various equipment for user use including:

- Canoes, Personal Flotation Devices and Paddles
- Hip Waders
- Laptops
- Binoculars and Spotting Scopes
- Microscopes
- Field Vests
- Sample Containers

please treat equipment as it was your own, some pieces are very expensive

Equipment Storage

Each individual staying in the station has access to a storage unit beneath their bed. Personal items may be stored here.

Each person staying at the station can access a lockable storage locker in the garage. Locks are not supplied.

Personal lab equipment may be stored in the lab; make sure to label it well to prevent others from using it. Lab samples can be stored in the refrigerator in the lab.

The garage may be used to store large equipment. Please be sure to keep the garage locked during your stay.

Perishable **food** items can be kept in the refrigerator in the kitchen.